

Product datasheet for **TA323995**

ALDH4A1 Rabbit Polyclonal Antibody

Product data:

Product Type:	Primary Antibodies
Applications:	IHC, WB
Recommended Dilution:	WB: 500-2000 WB positive control: Human fetal liver and liver cancer tissue IHC: 50-200 Positive control: Human breast cancer Predicted cell location: Cytoplasm
Reactivity:	Human, Mouse, Rat
Host:	Rabbit
Isotype:	IgG
Clonality:	Polyclonal
Immunogen:	Fusion protein corresponding to C terminal 250 amino acids of human aldehyde dehydrogenase 4 family, member A1
Formulation:	PBS pH7.3, 0.05% NaN ₃ , 50% glycerol
Concentration:	lot specific
Purification:	Antigen affinity purification
Conjugation:	Unconjugated
Storage:	Store at -20°C as received.
Stability:	Stable for 12 months from date of receipt.
Predicted Protein Size:	62 kDa
Gene Name:	aldehyde dehydrogenase 4 family member A1
Database Link:	NP_001154976 Entrez Gene 212647 Mouse Entrez Gene 641316 Rat Entrez Gene 8659 Human P30038



[View online »](#)

Background:

This protein belongs to the aldehyde dehydrogenase family of proteins. This enzyme is a mitochondrial matrix NAD-dependent dehydrogenase which catalyzes the second step of the proline degradation pathway, converting pyrroline-5-carboxylate to glutamate. Deficiency of this enzyme is associated with type II hyperprolinemia, an autosomal recessive disorder characterized by accumulation of delta-1-pyrroline-5-carboxylate (P5C) and proline. Alternatively spliced transcript variants encoding different isoforms have been identified for this gene.

Synonyms:

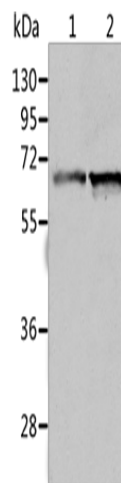
ALDH4; P5CD; P5CDh

Protein Families:

Druggable Genome

Protein Pathways:

Alanine, aspartate and glutamate metabolism, Arginine and proline metabolism, Metabolic pathways

Product images:

Gel: 10%SDS-PAGE

Lysate: 40 µg

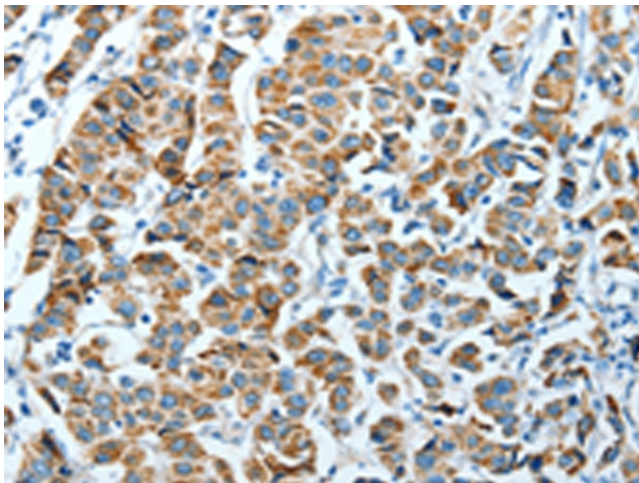
Lane 1-2: Human fetal liver tissue

Human liver cancer tissue

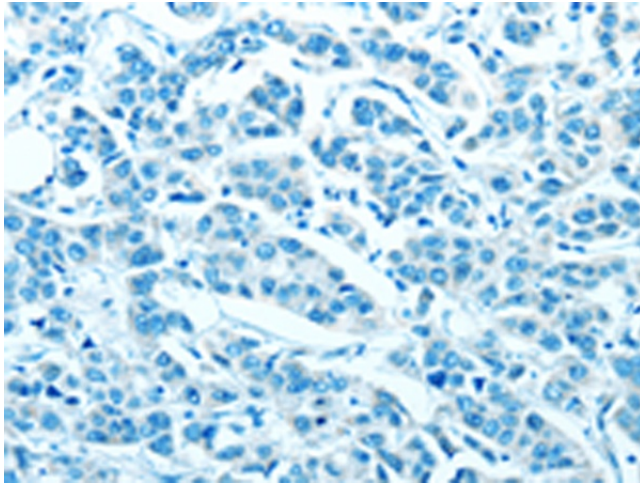
Primary antibody: TA323995 (ALDH4A1 Antibody)
at dilution 1/450

Secondary antibody: Goat anti rabbit IgG at
1/8000 dilution

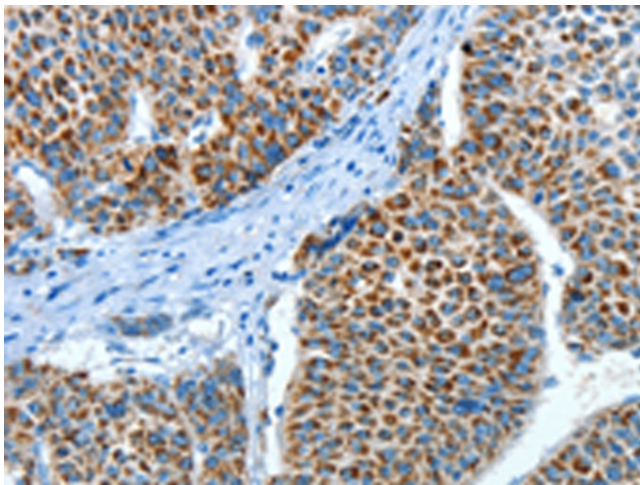
Exposure time: 30 seconds



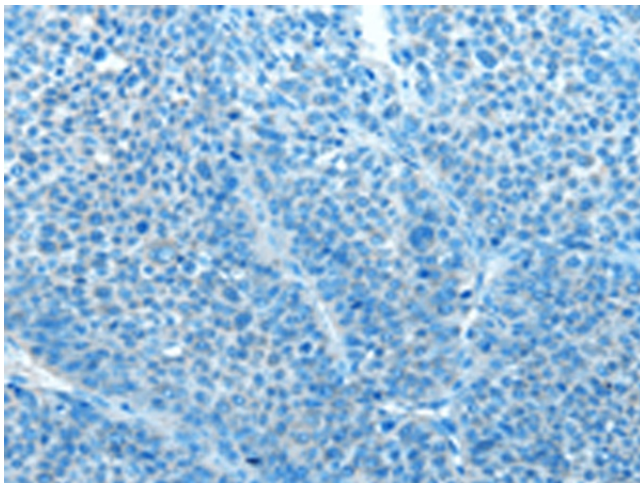
Immunohistochemistry of paraffin-embedded
Human breast cancer tissue using TA323995
(ALDH4A1 Antibody) at dilution 1/45 (Original
magnification: ×200)



Immunohistochemistry of paraffin-embedded Human breast cancer tissue using TA323995 (ALDH4A1 Antibody) at dilution 1/45, treated with fusion protein. (Original magnification: $\times 200$)



Immunohistochemistry of paraffin-embedded Human liver cancer tissue using TA323995 (ALDH4A1 Antibody) at dilution 1/45 (Original magnification: $\times 200$)



Immunohistochemistry of paraffin-embedded Human liver cancer tissue using TA323995 (ALDH4A1 Antibody) at dilution 1/45, treated with fusion protein. (Original magnification: $\times 200$)