

## Product datasheet for **TA323965**

### CCR3 Rabbit Polyclonal Antibody

#### Product data:

Product Type:	Primary Antibodies
Applications:	IHC, WB
Recommended Dilution:	ELISA: 1:1000-5000, WB: 1:200-1000, IHC: 1:50-200
Reactivity:	Human, Mouse, Rat
Host:	Rabbit
Isotype:	IgG
Clonality:	Polyclonal
Immunogen:	Synthetic peptide corresponding to a region derived from 10-25 amino acids of human chemokine (C-C motif) receptor 3
Formulation:	PBS pH7.3, 0.05% NaN <sub>3</sub> , 50% glycerol
Concentration:	lot specific
Purification:	Antigen affinity purification
Conjugation:	Unconjugated
Storage:	Store at -20°C as received.
Stability:	Stable for 12 months from date of receipt.
Predicted Protein Size:	43 kDa
Gene Name:	C-C motif chemokine receptor 3
Database Link:	<a href="#">NP_847898</a> <a href="#">Entrez Gene 12771 Mouse</a> <a href="#">Entrez Gene 117027 Rat</a> <a href="#">Entrez Gene 1232 Human</a> <a href="#">P51677</a>



[View online »](#)

**Background:**

The protein encoded by this gene is a receptor for C-C type chemokines. It belongs to family 1 of the G protein-coupled receptors. This receptor binds and responds to a variety of chemokines; including eotaxin (CCL11); eotaxin-3 (CCL26); MCP-3 (CCL7); MCP-4 (CCL13); and RANTES (CCL5). It is highly expressed in eosinophils and basophils; and is also detected in TH1 and TH2 cells; as well as in airway epithelial cells. This receptor may contribute to the accumulation and activation of eosinophils and other inflammatory cells in the allergic airway. It is also known to be an entry co-receptor for HIV-1. This gene and seven other chemokine receptor genes form a chemokine receptor gene cluster on the chromosomal region 3p21. Alternatively spliced transcript variants have been described.

**Synonyms:**

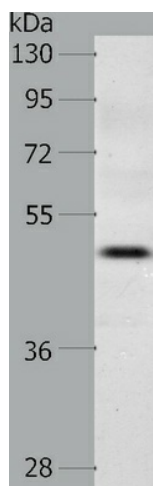
CC-CCR-3; CD193; CKR3; CMKBR3

**Protein Families:**

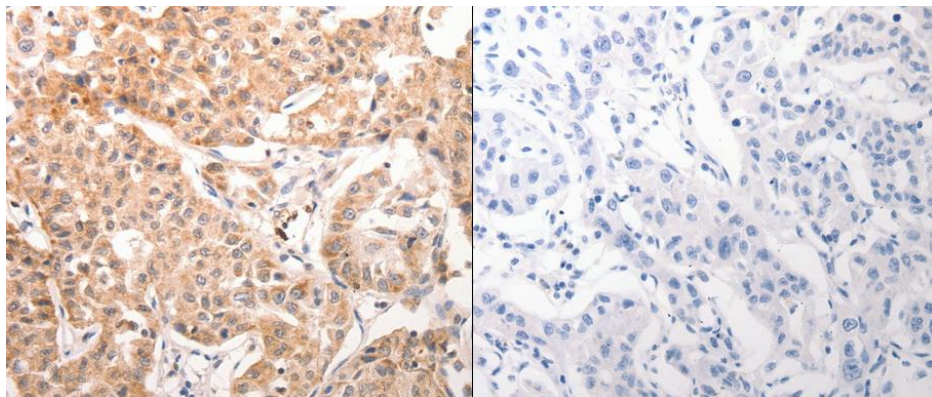
Druggable Genome, GPCR, Transmembrane

**Protein Pathways:**

Chemokine signaling pathway, Cytokine-cytokine receptor interaction

**Product images:**

Predicted band size: 43 kDa. Positive control: SKOV3 cell lysate. Recommended dilution: 1/200-1000. (Gel: 10%SDS-PAGE Lysate: 40 ug per lane Primary antibody: 1/300 dilution Secondary antibody: Goat anti Rabbit IgG - H&L (HRP) at 1/10000 dilution Exposure time: 90 seconds)



Predicted cell location: Cytoplasm. Positive control: Human lung cancer tissue. Recommended dilution: 1/50-200 The image on the left is immunohistochemistry of paraffin-embedded human lung cancer tissue using CCR3 antibody at dilution 1/40, on the right is treated with the synthetic peptide. (Original magnification:x200)