

## Product datasheet for **TA323769**

### Paxillin (PXN) Rabbit Polyclonal Antibody

#### Product data:

Product Type:	Primary Antibodies
Applications:	IHC, WB
Recommended Dilution:	WB: 1:500-1000, IHC: 1:50-100
Reactivity:	Human, Mouse, Rat
Modifications:	Phospho-specific
Host:	Rabbit
Isotype:	IgG
Clonality:	Polyclonal
Immunogen:	Peptide sequence around phosphorylation site of tyrosine 118 (H-V-Y(p)-S-F) derived from Human Paxillin.
Formulation:	PBS pH7.3, 0.05% NaN <sub>3</sub> , 50% glycerol
Concentration:	lot specific
Purification:	Antigen affinity purification
Conjugation:	Unconjugated
Storage:	Store at -20°C as received.
Stability:	Stable for 12 months from date of receipt.
Predicted Protein Size:	65 kDa
Gene Name:	paxillin
Database Link:	<a href="#">NP_079433</a> <a href="#">Entrez Gene 19303 Mouse</a> <a href="#">Entrez Gene 360820 Rat</a> <a href="#">Entrez Gene 5829 Human</a> <a href="#">P49023</a>
Background:	This gene encodes a cytoskeletal protein involved in actin-membrane attachment at sites of cell adhesion to the extracellular matrix (focal adhesion). Alternatively spliced transcript variants encoding different isoforms have been described for this gene. These isoforms exhibit different expression pattern, and have different biochemical, as well as physiological properties.
Synonyms:	FLJ16691

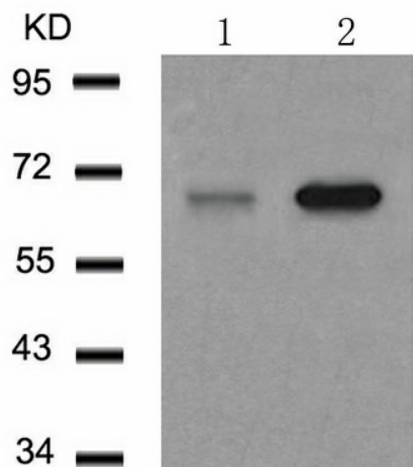


[View online »](#)

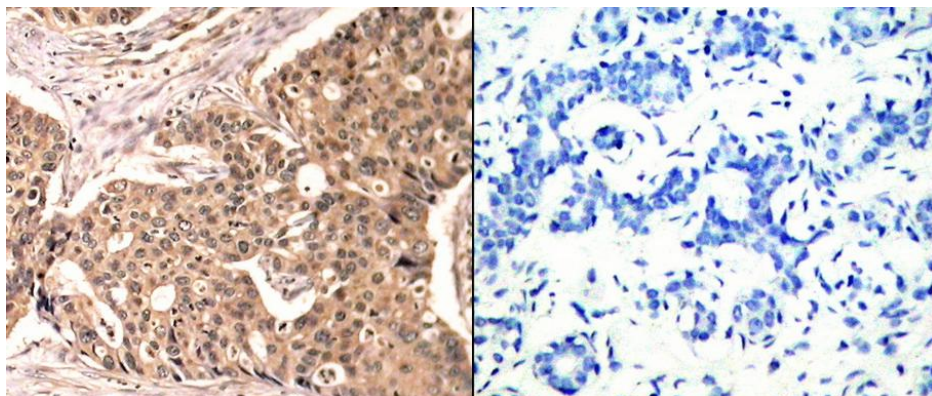
**Protein Families:** Druggable Genome, Stem cell - Pluripotency

**Protein Pathways:** Chemokine signaling pathway, Focal adhesion, Leukocyte transendothelial migration, Regulation of actin cytoskeleton, VEGF signaling pathway

**Product images:**



Predicted band size: 65 kDa. Positive control: NIH/3T3 cells untreated or treated with serum lysate. Recommended dilution: 1/ 500-1000. (Gel: 8%SDS-PAGE Lane 1: NIH/3T3 cells untreated with serum lysate Lane 2: NIH/3T3 cells treated with serum lysate Lysates: 30 ug per lane Primary antibody: 1/500 dilution Secondary antibody: Goat anti Rabbit IgG - H&L (HRP) at 1/10000 dilution Exposure time: 1 minute)



Predicted cell location: Cytoplasm. Positive control: Human breast carcinoma tissue. Recommended dilution: 1/ 50-100 The image on the left is immunohistochemistry of paraffin-embedded human breast carcinoma tissue using PXN (Phospho-Tyr118) antibody at dilution 1/50, on the right is treated with the synthetic peptide. (Original magnification: x200)