

## Product datasheet for **TA323735**

### EPOR Rabbit Polyclonal Antibody

#### Product data:

Product Type:	Primary Antibodies
Applications:	IHC, WB
Recommended Dilution:	WB: 500-2000 WB positive control: A549 cells IHC: 50-200 Positive control: Human liver cancer Predicted cell location: Cytoplasm
Reactivity:	Human, Mouse, Rat
Host:	Rabbit
Isotype:	IgG
Clonality:	Polyclonal
Immunogen:	Synthetic peptide corresponding to a region derived from 31-45 amino acids of Human erythropoietin receptor
Formulation:	PBS pH7.3, 0.05% NaN <sub>3</sub> , 50% glycerol
Concentration:	lot specific
Purification:	Antigen affinity purification
Conjugation:	Unconjugated
Storage:	Store at -20°C as received.
Stability:	Stable for 12 months from date of receipt.
Predicted Protein Size:	55 kDa
Gene Name:	erythropoietin receptor
Database Link:	<a href="#">NP_000112</a> <a href="#">Entrez Gene 13857 Mouse</a> <a href="#">Entrez Gene 24336 Rat</a> <a href="#">Entrez Gene 2057 Human</a> <a href="#">P19235</a>



[View online »](#)

**Background:**

This gene encodes the erythropoietin receptor which is a member of the cytokine receptor family. Upon erythropoietin binding; this receptor activates Jak2 tyrosine kinase which activates different intracellular pathways including: Ras/MAP kinase; phosphatidylinositol 3-kinase and STAT transcription factors. The stimulated erythropoietin receptor appears to have a role in erythroid cell survival. Defects in the erythropoietin receptor may produce erythroleukemia and familial erythrocytosis. Dysregulation of this gene may affect the growth of certain tumors. Alternate splicing results in multiple transcript variants.

**Synonyms:**

EPO-R

**Protein Families:**

Druggable Genome, Secreted Protein, Transmembrane

**Protein Pathways:**

Cytokine-cytokine receptor interaction, Hematopoietic cell lineage, Jak-STAT signaling pathway

**Product images:**


Gel: 8%SDS-PAGE

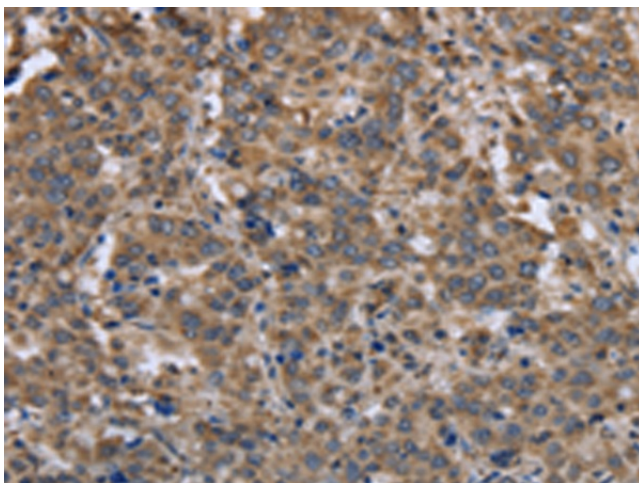
Lysate: 40 µg

Lane: A549 cells

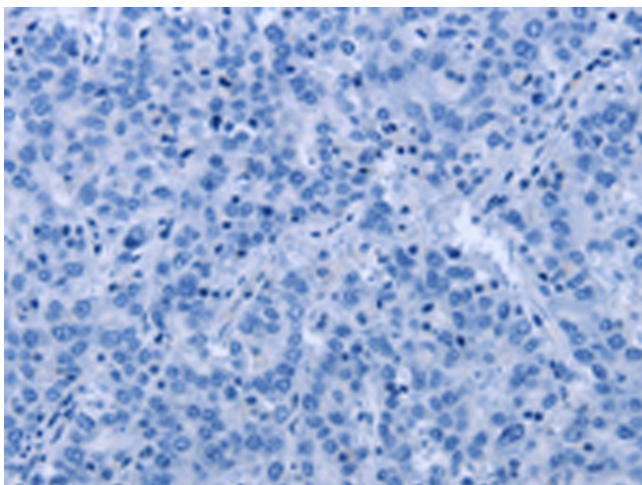
Primary antibody: TA323735 (EPOR Antibody) at dilution 1/500

Secondary antibody: Goat anti rabbit IgG at 1/8000 dilution

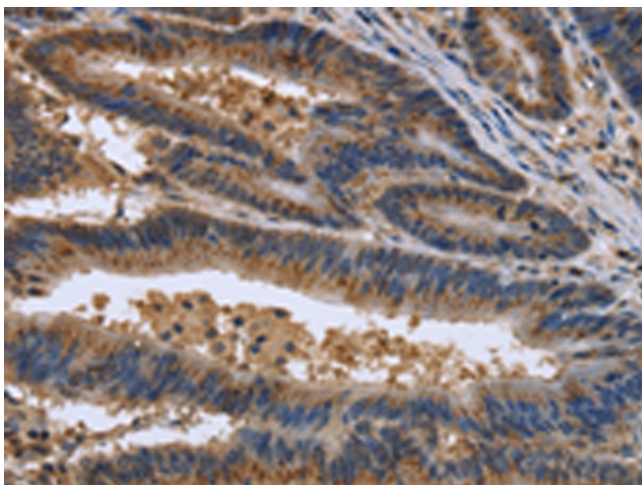
Exposure time: 40 seconds



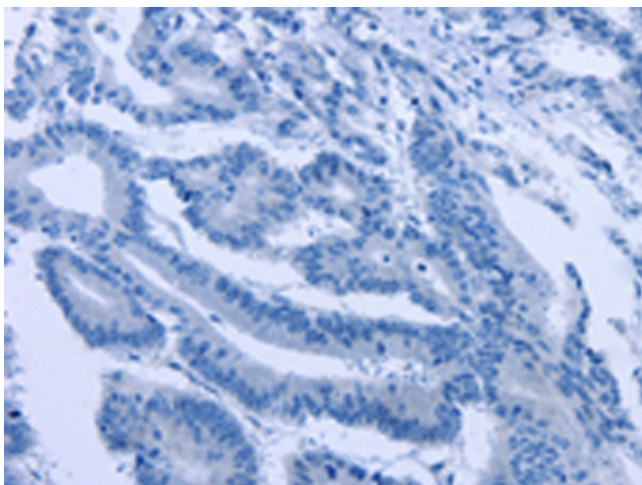
Immunohistochemistry of paraffin-embedded Human liver cancer tissue using TA323735 (EPOR Antibody) at dilution 1/30 (Original magnification: ×200)



Immunohistochemistry of paraffin-embedded Human liver cancer tissue using TA323735 (EPOR Antibody) at dilution 1/30, treated with synthetic peptide. (Original magnification:  $\times 200$ )



Immunohistochemistry of paraffin-embedded Human colon cancer tissue using TA323735 (EPOR Antibody) at dilution 1/30 (Original magnification:  $\times 200$ )



Immunohistochemistry of paraffin-embedded Human colon cancer tissue using TA323735 (EPOR Antibody) at dilution 1/30, treated with synthetic peptide. (Original magnification:  $\times 200$ )