

## Product datasheet for **TA323680**

### Tyrosinase (TYR) Rabbit Polyclonal Antibody

#### Product data:

Product Type:	Primary Antibodies
Applications:	IHC, WB
Recommended Dilution:	WB: 500-2000 WB positive control: A375, Hela and Jurkat cells IHC: 25-100 Positive control: Human thyroid cancer Predicted cell location: Cytoplasm
Reactivity:	Human, Mouse
Host:	Rabbit
Isotype:	IgG
Clonality:	Polyclonal
Immunogen:	Fusion protein corresponding to a region derived from 19-319 amino acids of human tyrosinase
Formulation:	PBS pH7.3, 0.05% NaN <sub>3</sub> , 50% glycerol
Concentration:	lot specific
Purification:	Antigen affinity purification
Conjugation:	Unconjugated
Storage:	Store at -20°C as received.
Stability:	Stable for 12 months from date of receipt.
Predicted Protein Size:	60 kDa
Gene Name:	tyrosinase
Database Link:	<a href="#">NP_000363</a> <a href="#">Entrez Gene 22173 Mouse</a> <a href="#">Entrez Gene 7299 Human</a> <a href="#">P14679</a>



[View online »](#)

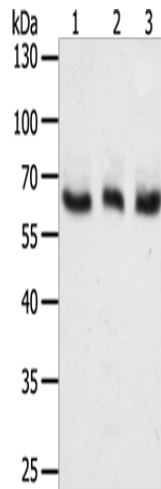
**Background:** The enzyme encoded by this gene catalyzes the first 2 steps; and at least 1 subsequent step; in the conversion of tyrosine to melanin. The enzyme has both tyrosine hydroxylase and dopa oxidase catalytic activities; and requires copper for function. Mutations in this gene result in oculocutaneous albinism; and nonpathologic polymorphisms result in skin pigmentation variation. The human genome contains a pseudogene similar to the 3' half of this gene.

**Synonyms:** ATN; CMM8; OCA1; OCA1A; OCAIA; SHEP3

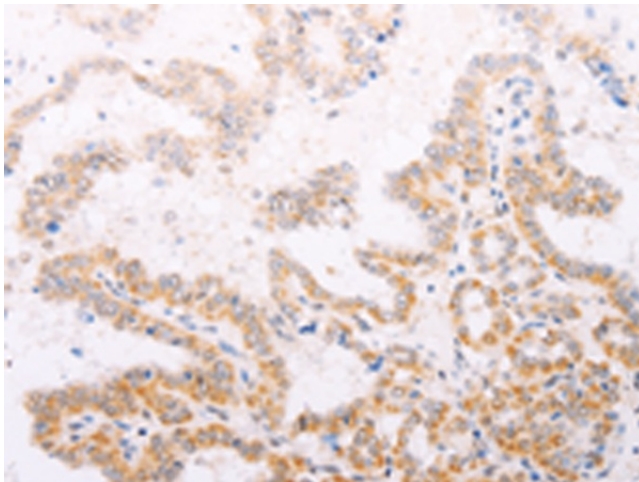
**Protein Families:** Transmembrane

**Protein Pathways:** Melanogenesis, Metabolic pathways, Riboflavin metabolism, Tyrosine metabolism

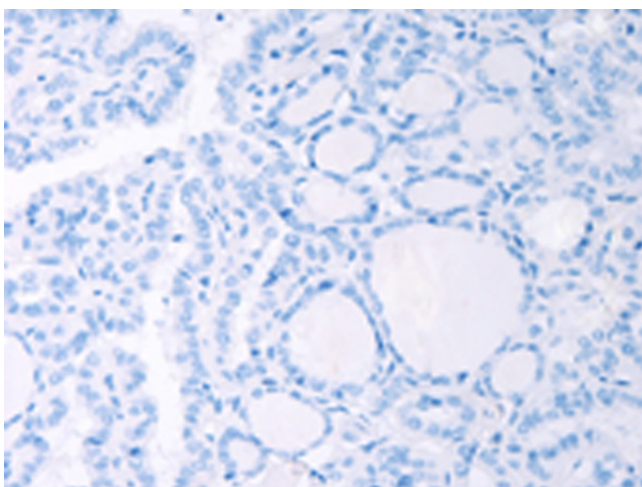
**Product images:**



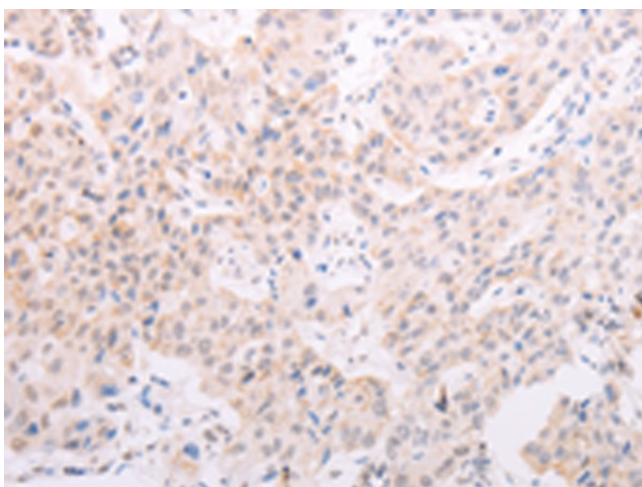
Gel: 10%SDS-PAGE  
 Lysate: 50 µg  
 Lane 1-3: A375 cells  
 HeLa cells  
 Jurkat cells  
 Primary antibody: TA323680 (TYR Antibody) at dilution 1/400  
 Secondary antibody: Goat anti rabbit IgG at 1/8000 dilution  
 Exposure time: 3 minutes



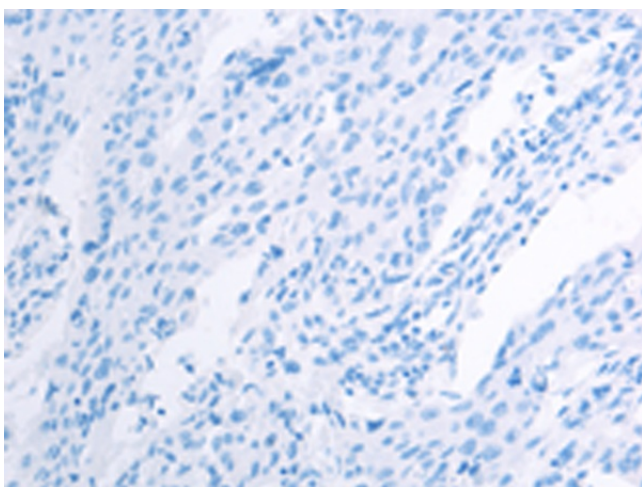
Immunohistochemistry of paraffin-embedded Human thyroid cancer tissue using TA323680 (TYR Antibody) at dilution 1/30 (Original magnification: ×200)



Immunohistochemistry of paraffin-embedded Human thyroid cancer tissue using TA323680 (TYR Antibody) at dilution 1/30, treated with fusion protein. (Original magnification:  $\times 200$ )



Immunohistochemistry of paraffin-embedded Human lung cancer tissue using TA323680 (TYR Antibody) at dilution 1/30 (Original magnification:  $\times 200$ )



Immunohistochemistry of paraffin-embedded Human lung cancer tissue using TA323680 (TYR Antibody) at dilution 1/30, treated with fusion protein. (Original magnification:  $\times 200$ )