

Product datasheet for **TA323665**

Cytokeratin 17 (KRT17) Rabbit Polyclonal Antibody

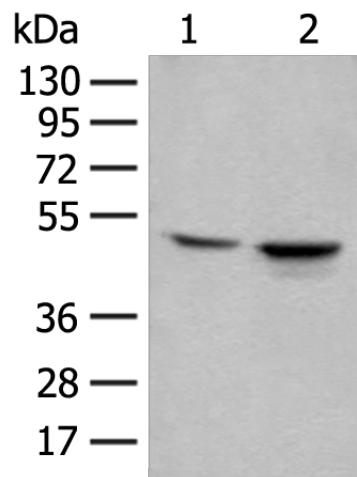
Product data:

Product Type:	Primary Antibodies
Applications:	IHC, WB
Recommended Dilution:	WB: 500-2000 WB positive control: SKOV3 and HEPG2 cell lysates IHC: 30-150 Positive control: Human lung cancer Predicted cell location: Cytoplasm and Cell membrane
Reactivity:	Human, Mouse, Rat
Host:	Rabbit
Isotype:	IgG
Clonality:	Polyclonal
Immunogen:	Fusion protein corresponding to a region derived from 102-346 amino acids of Human Keratin, type I cytoskeletal 17
Formulation:	PBS pH7.3, 0.05% NaN ₃ , 50% glycerol
Concentration:	lot specific
Purification:	Antigen affinity purification
Conjugation:	Unconjugated
Storage:	Store at -20°C as received.
Stability:	Stable for 12 months from date of receipt.
Predicted Protein Size:	48 kDa
Gene Name:	keratin 17
Database Link:	NP_000413 Entrez Gene 16667 Mouse Entrez Gene 287702 Rat Entrez Gene 3872 Human Q04695
Background:	This gene encodes the type I intermediate filament chain keratin 17; expressed in nail bed; hair follicle; sebaceous glands; and other epidermal appendages. Mutations in this gene lead to Jackson-Lawler type pachyonychia congenita and steatocystoma multiplex.
Synonyms:	39.1; CK-17; K17; PC; PC2; PCHC1

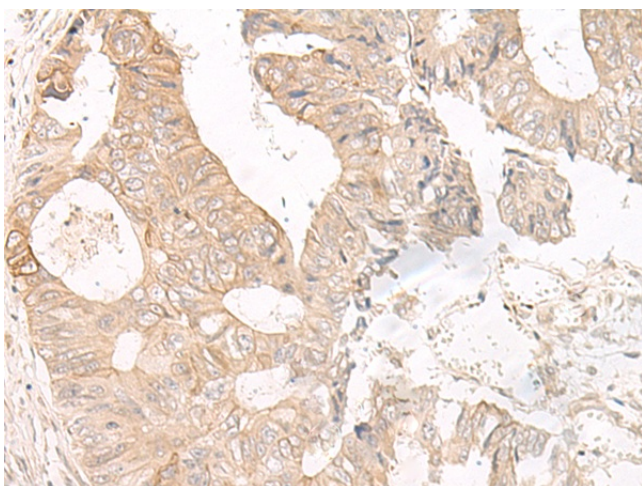


[View online »](#)

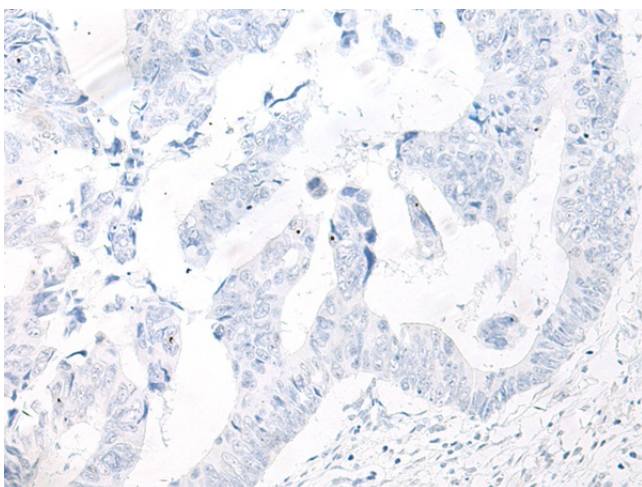
Product images:



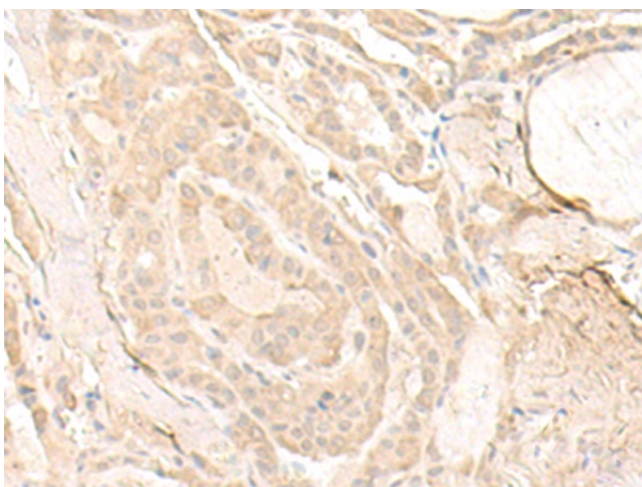
Gel: 8%SDS-PAGE
Lysate: 40 μ g
Lane 1-2: SKOV3 and HEPG2 cell lysates
Primary antibody: TA323665 (KRT17 Antibody) at dilution 1/250
Secondary antibody: Goat anti rabbit IgG at 1/8000 dilution
Exposure time: 1 second



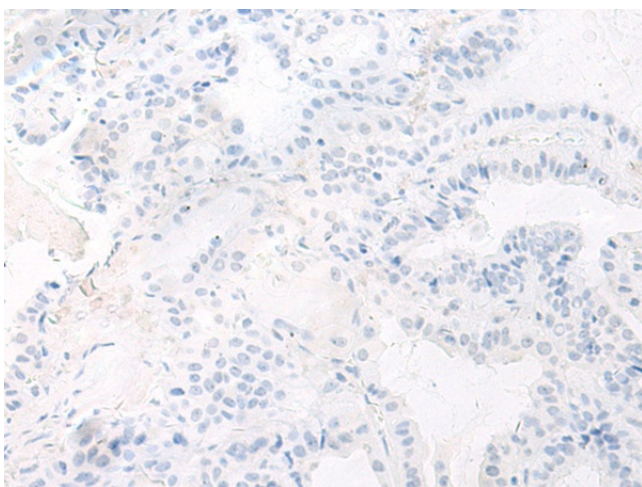
Immunohistochemistry of paraffin-embedded Human lung cancer tissue using TA323665 (KRT17 Antibody) at dilution 1/35 (Original magnification: \times 200)



Immunohistochemistry of paraffin-embedded Human lung cancer tissue using TA323665 (KRT17 Antibody) at dilution 1/35, treated with fusion protein. (Original magnification: ×200)



Immunohistochemistry of paraffin-embedded Human thyroid cancer tissue using TA323665 (KRT17 Antibody) at dilution 1/35 (Original magnification: ×200)



Immunohistochemistry of paraffin-embedded Human thyroid cancer tissue using TA323665 (KRT17 Antibody) at dilution 1/35, treated with fusion protein. (Original magnification: ×200)