

Product datasheet for **TA323614**

PAI1 (SERPINE1) Rabbit Polyclonal Antibody

Product data:

Product Type:	Primary Antibodies
Applications:	IHC
Recommended Dilution:	IHC: 25-100 Positive control: Human breast cancer Predicted cell location: Cytoplasm
Reactivity:	Human, Rat
Host:	Rabbit
Isotype:	IgG
Clonality:	Polyclonal
Immunogen:	Fusion protein corresponding to a region derived from 24-324 amino acids of human serpin peptidase inhibitor, clade E (nexin, plasminogen activator inhibitor type 1), member 1
Formulation:	PBS pH7.3, 0.05% NaN ₃ , 50% glycerol
Concentration:	lot specific
Purification:	Antigen affinity purification
Conjugation:	Unconjugated
Storage:	Store at -20°C as received.
Stability:	Stable for 12 months from date of receipt.
Gene Name:	serpin family E member 1
Database Link:	NP_000593 Entrez Gene 24617 Rat Entrez Gene 5054 Human P05121
Background:	This gene encodes a member of the serine proteinase inhibitor (serpin) superfamily. This member is the principal inhibitor of tissue plasminogen activator (tPA) and urokinase (uPA); and hence is an inhibitor of fibrinolysis. Defects in this gene are the cause of plasminogen activator inhibitor-1 deficiency (PAI-1 deficiency); and high concentrations of the gene product are associated with thrombophilia. Alternatively spliced transcript variants encoding different isoforms have been found for this gene.
Synonyms:	PAI; PAI-1; PAI1; PLANH1

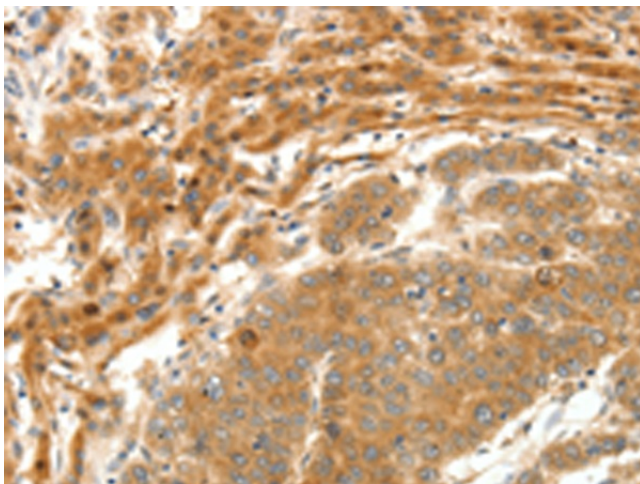


[View online »](#)

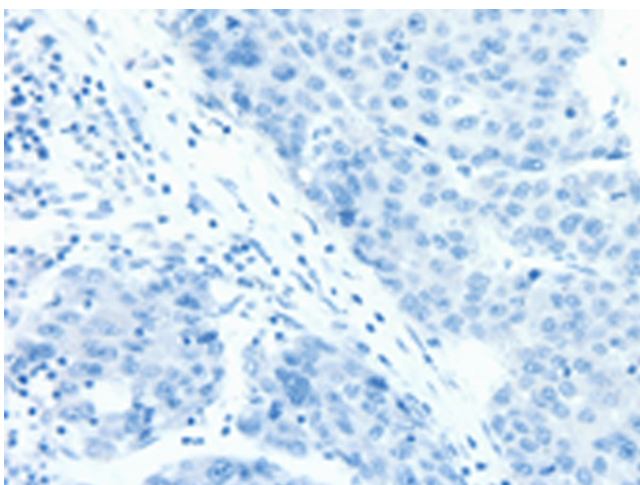
Protein Families: Druggable Genome, Secreted Protein

Protein Pathways: Complement and coagulation cascades, p53 signaling pathway

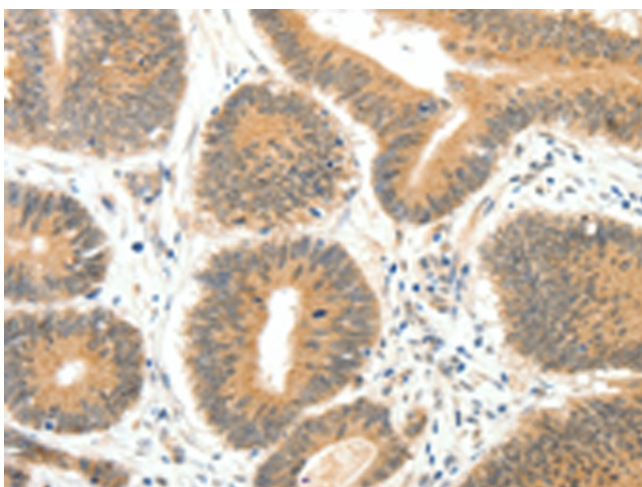
Product images:



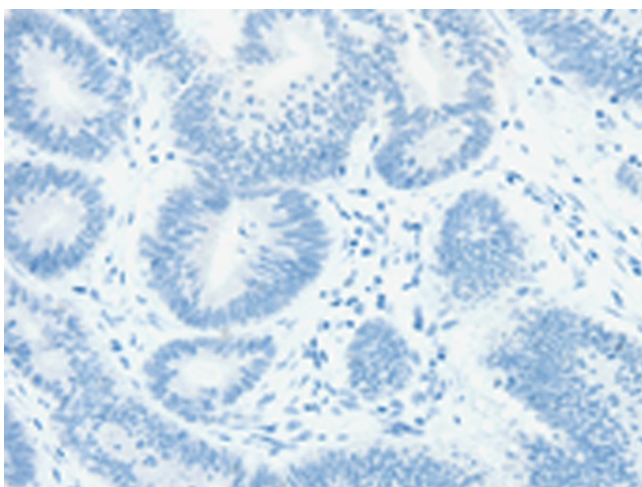
Immunohistochemistry of paraffin-embedded Human breast cancer tissue using TA323614 (SERPINE1 Antibody) at dilution 1/20 (Original magnification: ×200)



Immunohistochemistry of paraffin-embedded Human breast cancer tissue using TA323614 (SERPINE1 Antibody) at dilution 1/20, treated with fusion protein. (Original magnification: ×200)



Immunohistochemistry of paraffin-embedded Human colon cancer tissue using TA323614 (SERPINE1 Antibody) at dilution 1/20 (Original magnification: $\times 200$)



Immunohistochemistry of paraffin-embedded Human colon cancer tissue using TA323614 (SERPINE1 Antibody) at dilution 1/20, treated with fusion protein. (Original magnification: $\times 200$)