

Product datasheet for **TA323613**

SDF1 (CXCL12) Rabbit Polyclonal Antibody

Product data:

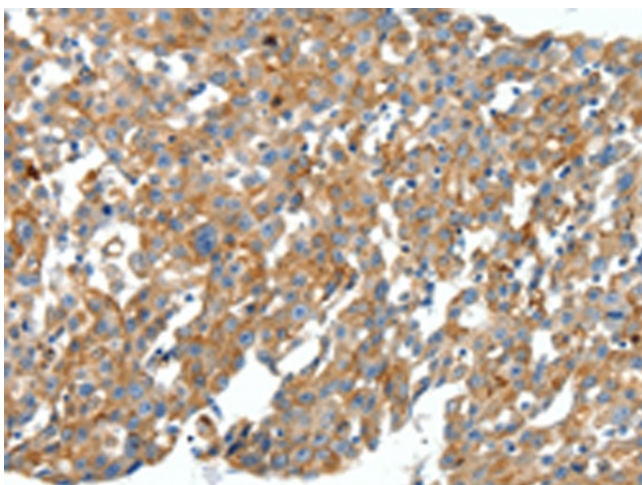
Product Type:	Primary Antibodies
Applications:	IHC
Recommended Dilution:	IHC: 50-200 Positive control: Human breast cancer Predicted cell location: Cytoplasm
Reactivity:	Human, Mouse
Host:	Rabbit
Isotype:	IgG
Clonality:	Polyclonal
Immunogen:	Synthetic peptide corresponding to a region derived from 36-50 amino acids of human chemokine (C-X-C motif) ligand 12
Formulation:	PBS pH7.3, 0.05% NaN ₃ , 50% glycerol
Concentration:	lot specific
Purification:	Antigen affinity purification
Conjugation:	Unconjugated
Storage:	Store at -20°C as received.
Stability:	Stable for 12 months from date of receipt.
Gene Name:	C-X-C motif chemokine ligand 12
Database Link:	NP_000600 Entrez Gene 20315 Mouse Entrez Gene 6387 Human P48061
Background:	This gene encodes a stromal cell-derived alpha chemokine member of the intercrine family. This gene product and its receptor CXCR4 can activate lymphocytes and have been implicated in the metastasis of some cancers such as breast cancer. Mutations in this gene are associated with resistance to human immunodeficiency virus type 1 infections. Multiple transcript variants encoding different isoforms have been found for this gene.
Synonyms:	IRH; PBSF; SCYB12; SDF1; TLSF; TPAR1
Protein Families:	Druggable Genome, ES Cell Differentiation/IPS, Secreted Protein



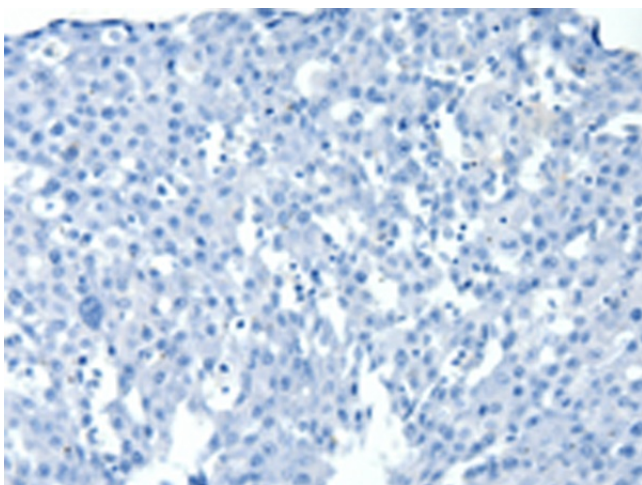
[View online »](#)

Protein Pathways: Axon guidance, Chemokine signaling pathway, Cytokine-cytokine receptor interaction, Leukocyte transendothelial migration

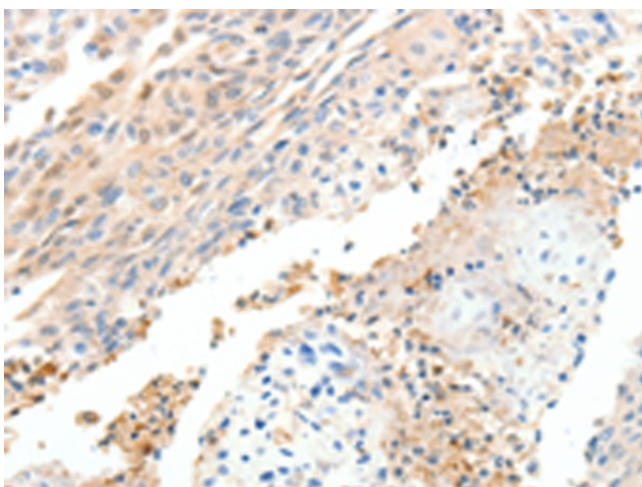
Product images:



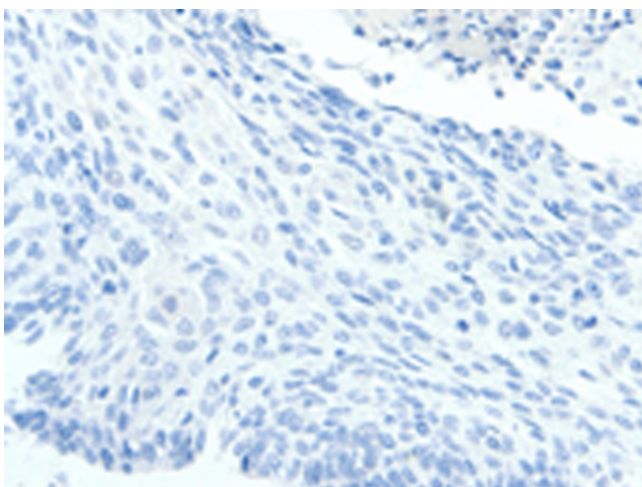
Immunohistochemistry of paraffin-embedded Human breast cancer tissue using TA323613 (CXCL12 Antibody) at dilution 1/40 (Original magnification: $\times 200$)



Immunohistochemistry of paraffin-embedded Human breast cancer tissue using TA323613 (CXCL12 Antibody) at dilution 1/40, treated with synthetic peptide. (Original magnification: $\times 200$)



Immunohistochemistry of paraffin-embedded Human cervical cancer tissue using TA323613 (CXCL12 Antibody) at dilution 1/40 (Original magnification: $\times 200$)



Immunohistochemistry of paraffin-embedded Human cervical cancer tissue using TA323613 (CXCL12 Antibody) at dilution 1/40, treated with synthetic peptide. (Original magnification: $\times 200$)