

## Product datasheet for **TA323599**

### ADH1B Rabbit Polyclonal Antibody

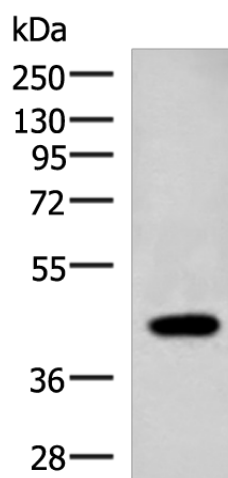
#### Product data:

Product Type:	Primary Antibodies
Applications:	IHC, WB
Recommended Dilution:	WB: 1000-5000 WB positive control: Raji cell lysate IHC: 50-300 Positive control: Human tonsil Predicted cell location: Cytoplasm
Reactivity:	Human
Host:	Rabbit
Isotype:	IgG
Clonality:	Polyclonal
Immunogen:	Synthetic peptide corresponding to a region derived from 226-338 amino acids of human alcohol dehydrogenase 1B (class I), beta polypeptide
Formulation:	PBS pH7.3, 0.05% NaN <sub>3</sub> , 50% glycerol
Concentration:	lot specific
Purification:	Antigen affinity purification
Conjugation:	Unconjugated
Storage:	Store at -20°C as received.
Stability:	Stable for 12 months from date of receipt.
Predicted Protein Size:	40 kDa
Gene Name:	alcohol dehydrogenase 1B (class I), beta polypeptide
Database Link:	<a href="#">NP_000659</a> <a href="#">Entrez Gene 125 Human</a> <a href="#">P00325</a>

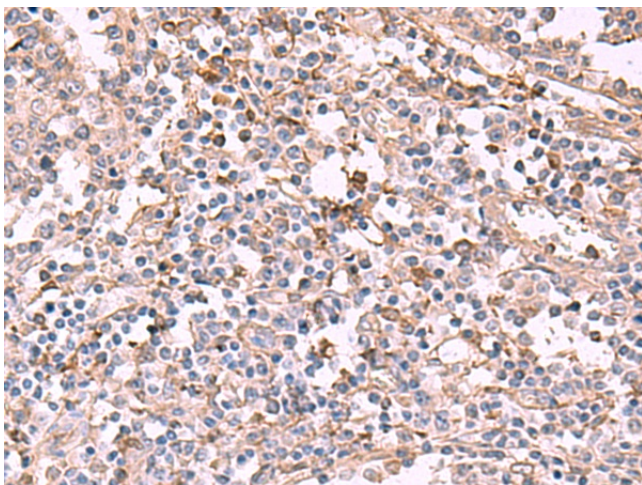


[View online »](#)

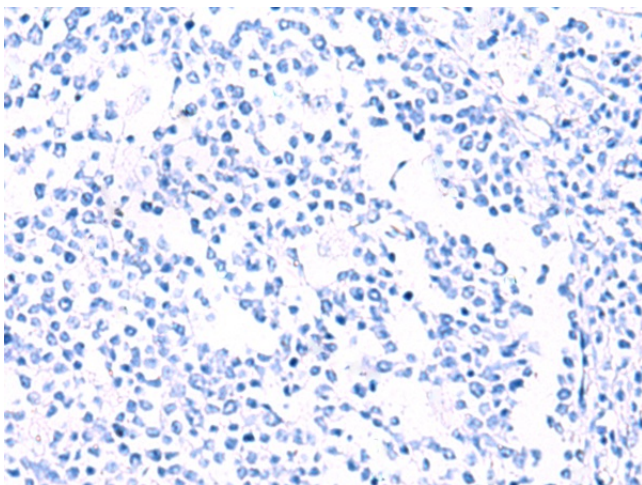
<b>Background:</b>	The protein encoded by this gene is a member of the alcohol dehydrogenase family. Members of this enzyme family metabolize a wide variety of substrates; including ethanol; retinol; other aliphatic alcohols; hydroxysteroids; and lipid peroxidation products. This encoded protein; consisting of several homo- and heterodimers of alpha; beta; and gamma subunits; exhibits high activity for ethanol oxidation and plays a major role in ethanol catabolism. Three genes encoding alpha; beta and gamma subunits are tandemly organized in a genomic segment as a gene cluster.
<b>Synonyms:</b>	ADH2; HEL-S-117
<b>Protein Families:</b>	Druggable Genome
<b>Protein Pathways:</b>	Drug metabolism - cytochrome P450, Fatty acid metabolism, Glycolysis / Gluconeogenesis, Metabolic pathways, Metabolism of xenobiotics by cytochrome P450, Retinol metabolism, Tyrosine metabolism

**Product images:**

Gel: 8%SDS-PAGE  
Lysate: 40  $\mu$ g  
Lane: Raji cell lysate  
Primary antibody: TA323599 (ADH1B Antibody) at dilution 1/1000  
Secondary antibody: Goat anti rabbit IgG at 1/5000 dilution  
Exposure time: 20 seconds



Immunohistochemistry of paraffin-embedded Human tonsil tissue using TA323599 (ADH1B Antibody) at dilution 1/55 (Original magnification: ×200)



Immunohistochemistry of paraffin-embedded Human tonsil tissue using TA323599 (ADH1B Antibody) at dilution 1/55, treated with synthetic peptide. (Original magnification: ×200)