

## Product datasheet for **TA323406**

### **NQO1 Rabbit Polyclonal Antibody**

#### **Product data:**

Product Type:	Primary Antibodies
Applications:	IHC, WB
Recommended Dilution:	WB: 500-2000 WB positive control: Hela cells IHC: 25-100 Positive control: Human liver cancer Predicted cell location: Cytoplasm
Reactivity:	Human, Mouse, Rat
Host:	Rabbit
Isotype:	IgG
Clonality:	Polyclonal
Immunogen:	Synthetic peptide corresponding to a region derived from 260-274 amino acids of Human NAD(P)H dehydrogenase, quinone 1
Formulation:	PBS pH7.3, 0.05% NaN <sub>3</sub> , 50% glycerol
Concentration:	lot specific
Purification:	Antigen affinity purification
Conjugation:	Unconjugated
Storage:	Store at -20°C as received.
Stability:	Stable for 12 months from date of receipt.
Predicted Protein Size:	27 kDa
Gene Name:	NAD(P)H quinone dehydrogenase 1
Database Link:	<a href="#">NP_001020604</a> <a href="#">Entrez Gene 18104 Mouse</a> <a href="#">Entrez Gene 24314 Rat</a> <a href="#">Entrez Gene 1728 Human P15559</a>



[View online »](#)

**Background:**

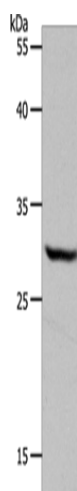
This gene is a member of the NAD(P)H dehydrogenase (quinone) family and encodes a cytoplasmic 2-electron reductase. This FAD-binding protein forms homodimers and reduces quinones to hydroquinones. This protein's enzymatic activity prevents the one electron reduction of quinones that results in the production of radical species. Mutations in this gene have been associated with tardive dyskinesia (TD); an increased risk of hematotoxicity after exposure to benzene; and susceptibility to various forms of cancer. Altered expression of this protein has been seen in many tumors and is also associated with Alzheimer's disease (AD). Alternate transcriptional splice variants; encoding different isoforms; have been characterized.

**Synonyms:**

DHQU; DIA4; DTD; NMOR1; NMORI; QR1

**Protein Families:**

Druggable Genome

**Product images:**

Gel: 10%SDS-PAGE

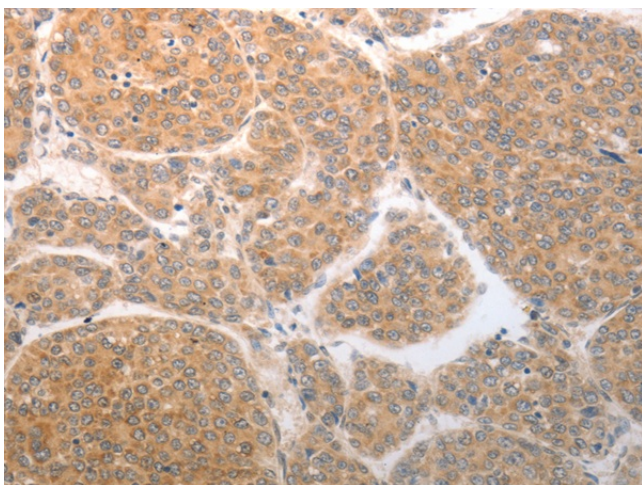
Lysate: 40 µg

Lane: HeLa cells

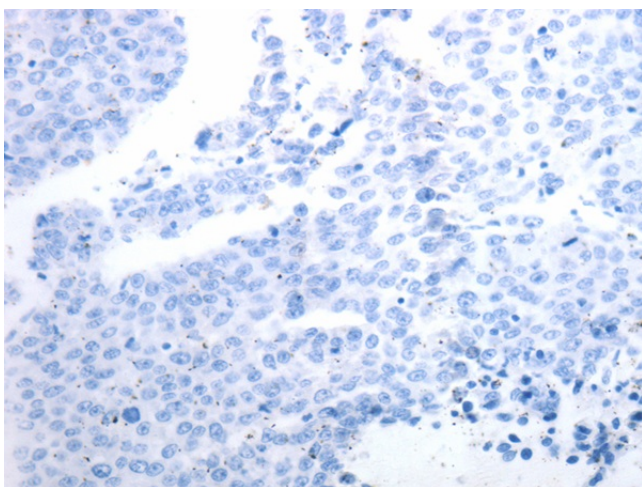
Primary antibody: TA323406 (NQO1 Antibody) at dilution 1/600

Secondary antibody: Goat anti rabbit IgG at 1/8000 dilution

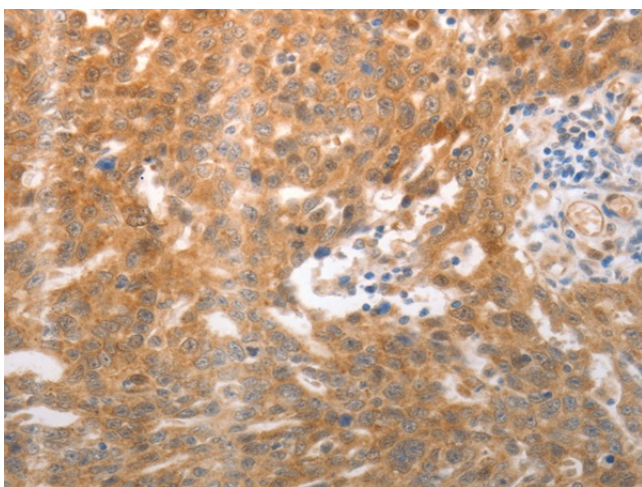
Exposure time: 30 seconds



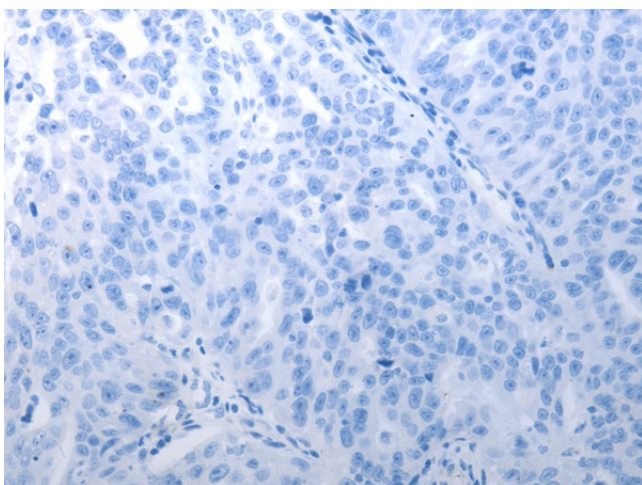
Immunohistochemistry of paraffin-embedded Human liver cancer tissue using TA323406 (NQO1 Antibody) at dilution 1/25 (Original magnification: ×200)



Immunohistochemistry of paraffin-embedded Human liver cancer tissue using TA323406 (NQO1 Antibody) at dilution 1/25, treated with synthetic peptide. (Original magnification: x200)



Immunohistochemistry of paraffin-embedded Human ovarian cancer tissue using TA323406 (NQO1 Antibody) at dilution 1/25 (Original magnification: x200)



Immunohistochemistry of paraffin-embedded Human ovarian cancer tissue using TA323406 (NQO1 Antibody) at dilution 1/25, treated with synthetic peptide. (Original magnification: x200)