

Product datasheet for **TA323360**

PAR6 (PARD6A) Rabbit Polyclonal Antibody

Product data:

| | |
|-------------------------|---|
| Product Type: | Primary Antibodies |
| Applications: | IHC, WB |
| Recommended Dilution: | ELISA: 1:2000-5000, WB: 1:500-2000, IHC: 1:25-100 |
| Reactivity: | Human, Mouse, Rat |
| Host: | Rabbit |
| Isotype: | IgG |
| Clonality: | Polyclonal |
| Immunogen: | Synthetic peptide peptide corresponding to a region derived from 334-346 amino acids of human par-6 partitioning defective 6 homolog alpha (C. elegans) |
| Formulation: | PBS pH7.3, 0.05% NaN ₃ , 50% glycerol |
| Concentration: | lot specific |
| Purification: | Antigen affinity purification |
| Conjugation: | Unconjugated |
| Storage: | Store at -20°C as received. |
| Stability: | Stable for 12 months from date of receipt. |
| Predicted Protein Size: | 37 kDa |
| Gene Name: | par-6 family cell polarity regulator alpha |
| Database Link: | NP_001032358 Entrez Gene 56513 MouseEntrez Gene 307799 RatEntrez Gene 50855 Human Q9NPB6 |

Background: This gene is a member of the PAR6 family and encodes a protein with a PSD95/Discs-large/ZO1 (PDZ) domain and a semi-Cdc42/Rac interactive binding (CRIB) domain. This cell membrane protein is involved in asymmetrical cell division and cell polarization processes as a member of a multi-protein complex. The protein also has a role in the epithelial-to-mesenchymal transition (EMT) that characterizes the invasive phenotype associated with metastatic carcinomas. Alternate transcriptional splice variants; encoding different isoforms; have been characterized.

Synonyms: PAR-6A; PAR6; PAR6alpha; PAR6C; TAX40; TIP-40

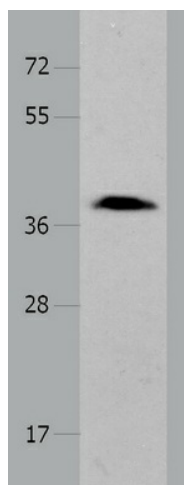


[View online »](#)

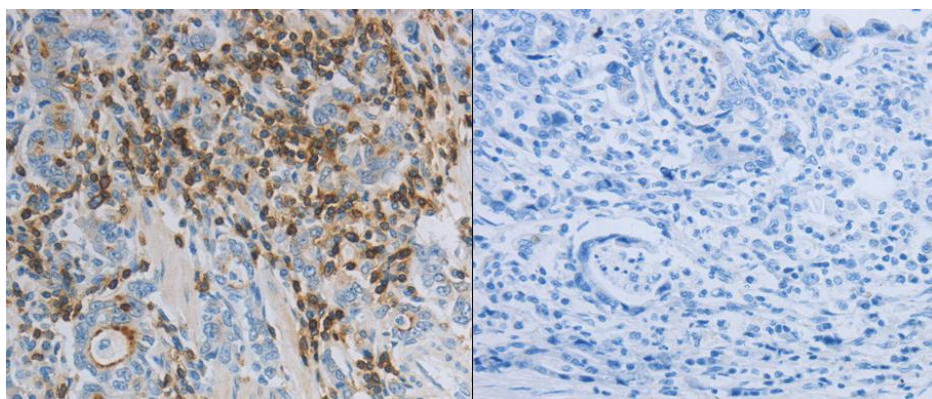
Protein Families: Druggable Genome, Transcription Factors

Protein Pathways: Endocytosis, Tight junction

Product images:



Predicted band size: 37 kDa. Positive control: 293T cell lysate. Recommended dilution: 1/500-2000



Predicted cell location: Cytoplasm. Positive control: Human gastric cancer tissue. Recommended dilution: 1/25-100 The image on the left is immunohistochemistry of paraffin-embedded Human gastric cancer tissue using PARD6A antibody at dilution 1/40, on the right is treated with the synthetic peptide. (Original magnification: x200)