

Product datasheet for **TA323272**

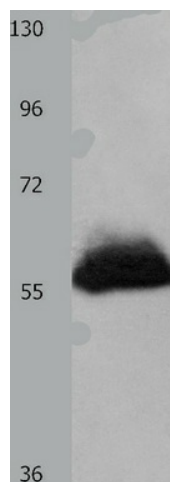
Heparanase 1 (HPSE) Rabbit Polyclonal Antibody

Product data:

Product Type:	Primary Antibodies
Applications:	WB
Recommended Dilution:	ELISA: 1:2000-5000, WB: 1:500-2000
Reactivity:	Human, Mouse, Rat
Host:	Rabbit
Isotype:	IgG
Clonality:	Polyclonal
Immunogen:	Fusion protein corresponding to a C terminal 250 amino acids of human heparanase
Formulation:	PBS pH7.3, 0.05% NaN ₃ , 50% glycerol
Concentration:	lot specific
Purification:	Antigen affinity purification
Conjugation:	Unconjugated
Storage:	Store at -20°C as received.
Stability:	Stable for 12 months from date of receipt.
Predicted Protein Size:	61 kDa
Gene Name:	heparanase
Database Link:	NP_001092010 Entrez Gene 15442 MouseEntrez Gene 64537 RatEntrez Gene 10855 Human Q9Y251
Background:	Heparan sulfate proteoglycans are major components of the basement membrane and extracellular matrix. The protein encoded by this gene is an enzyme that cleaves heparan sulfate proteoglycans to permit cell movement through remodeling of the extracellular matrix. In addition; this cleavage can release bioactive molecules from the extracellular matrix. Several transcript variants encoding different isoforms have been found for this gene.
Synonyms:	HPA; HPA1; HPR1; HPSE1; HSE1
Protein Families:	Secreted Protein
Protein Pathways:	Glycosaminoglycan degradation, Metabolic pathways



[View online »](#)

Product images:

Predicted band size: 61 kDa. Positive control: Human transitional cell carcinoma tissue lysate. Recommended dilution: 1/500-2000. (Gel: 10%SDS-PAGE Lysate: 60 ug Primary antibody: 1/100 dilution Secondary antibody: Goat anti Rabbit IgG - H&L (HRP) at 1/10000 dilution Exposure time: 5 minutes)