

Product datasheet for **TA323105**

COX7B Rabbit Polyclonal Antibody

Product data:

Product Type:	Primary Antibodies
Applications:	IHC, WB
Recommended Dilution:	WB: 500-2000 WB positive control: 293T cells IHC: 100-300 Positive control: Human colon cancer Predicted cell location: Cytoplasm
Reactivity:	Human, Rat
Host:	Rabbit
Isotype:	IgG
Clonality:	Polyclonal
Immunogen:	Fusion protein corresponding to a region derived from 1-79 amino acids of human cytochrome c oxidase subunit VIIIb
Formulation:	PBS pH7.3, 0.05% NaN ₃ , 50% glycerol
Concentration:	lot specific
Purification:	Antigen affinity purification
Conjugation:	Unconjugated
Storage:	Store at -20°C as received.
Stability:	Stable for 12 months from date of receipt.
Predicted Protein Size:	9 kDa
Gene Name:	cytochrome c oxidase subunit 7B
Database Link:	NP_001857 Entrez Gene 303393 Rat Entrez Gene 1349 Human P24311



[View online »](#)

Background:

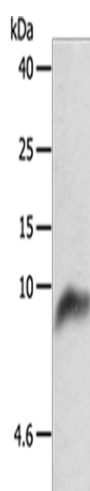
Cytochrome c oxidase (COX); the terminal component of the mitochondrial respiratory chain; catalyzes the electron transfer from reduced cytochrome c to oxygen. This component is a heteromeric complex consisting of 3 catalytic subunits encoded by mitochondrial genes and multiple structural subunits encoded by nuclear genes. The mitochondrially-encoded subunits function in electron transfer; and the nuclear-encoded subunits may function in the regulation and assembly of the complex. This nuclear gene encodes subunit VIIb; which is highly similar to bovine COX VIIb protein and is found in all tissues. This gene may have several pseudogenes on chromosomes 1; 2; 20 and 22.

Synonyms:

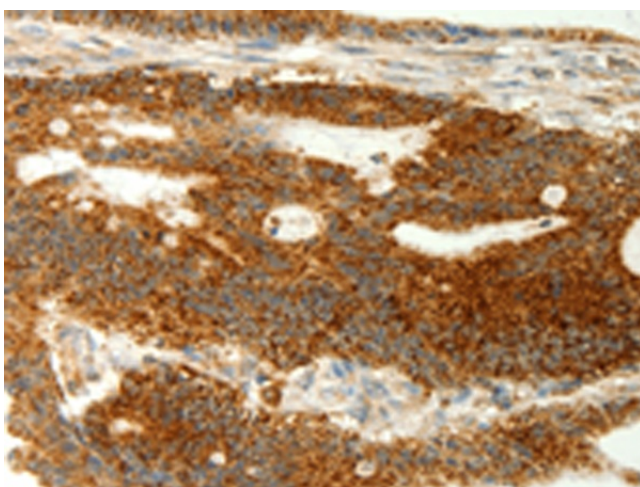
APLCC; LSDMCA2

Protein Pathways:

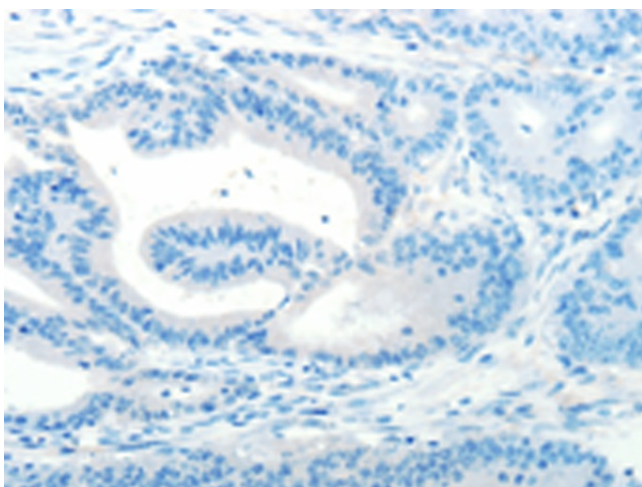
Alzheimer's disease, Cardiac muscle contraction, Huntington's disease, Metabolic pathways, Oxidative phosphorylation, Parkinson's disease

Product images:

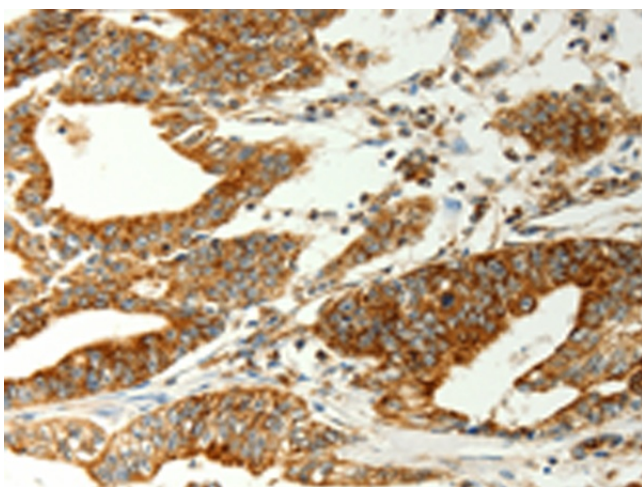
Gel: 10+15%SDS-PAGE
Lysate: 50 µg
Lane: 293T cells
Primary antibody: TA323105 (COX7B Antibody) at dilution 1/800
Secondary antibody: Goat anti rabbit IgG at 1/8000 dilution
Exposure time: 40 seconds



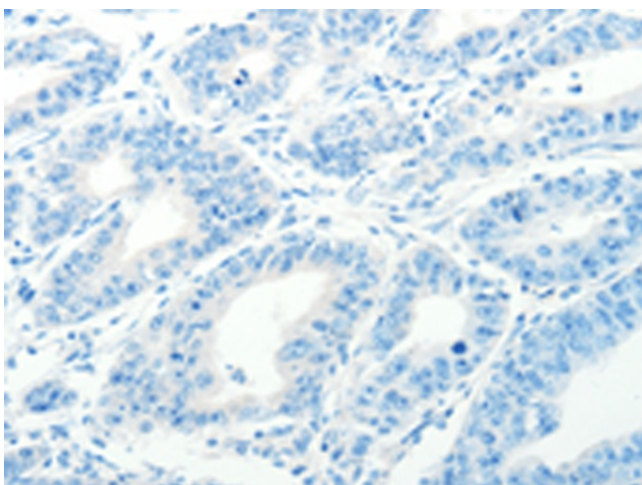
Immunohistochemistry of paraffin-embedded Human colon cancer tissue using TA323105 (COX7B Antibody) at dilution 1/70 (Original magnification: ×200)



Immunohistochemistry of paraffin-embedded Human colon cancer tissue using TA323105 (COX7B Antibody) at dilution 1/70, treated with fusion protein. (Original magnification: ×200)



Immunohistochemistry of paraffin-embedded Human gastric cancer tissue using TA323105 (COX7B Antibody) at dilution 1/70 (Original magnification: ×200)



Immunohistochemistry of paraffin-embedded Human gastric cancer tissue using TA323105 (COX7B Antibody) at dilution 1/70, treated with fusion protein. (Original magnification: ×200)