

Product datasheet for **TA323051**

Tenascin C (TNC) Rabbit Polyclonal Antibody

Product data:

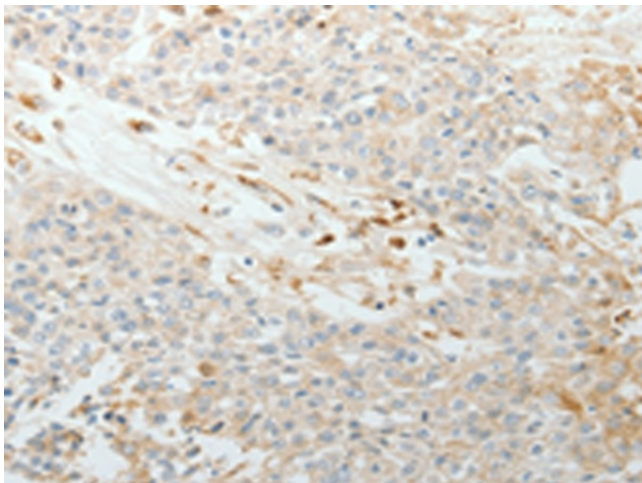
Product Type:	Primary Antibodies
Applications:	IHC
Recommended Dilution:	IHC: 25-100 Positive control: Human esophagus cancer Predicted cell location: Secreted, ExtraCellular matrix
Reactivity:	Human, Mouse
Host:	Rabbit
Isotype:	IgG
Clonality:	Polyclonal
Immunogen:	Synthetic peptide corresponding to a region derived from 2187-2201 amino acids of human tenascin C
Formulation:	PBS pH7.3, 0.05% NaN ₃ , 50% glycerol
Concentration:	lot specific
Purification:	Antigen affinity purification
Conjugation:	Unconjugated
Storage:	Store at -20°C as received.
Stability:	Stable for 12 months from date of receipt.
Gene Name:	tenascin C
Database Link:	NP_002151 Entrez Gene 21923 Mouse Entrez Gene 3371 Human P24821
Background:	This gene encodes an extracellular matrix protein with a spatially and temporally restricted tissue distribution. This protein is homohexameric with disulfide-linked subunits; and contains multiple EGF-like and fibronectin type-III domains. It is implicated in guidance of migrating neurons as well as axons during development; synaptic plasticity; and neuronal regeneration.
Synonyms:	150-225; DFNA56; GMEM; GP; HXB; JI; TN; TN-C
Protein Families:	Druggable Genome, ES Cell Differentiation/IPS, Secreted Protein, Transmembrane



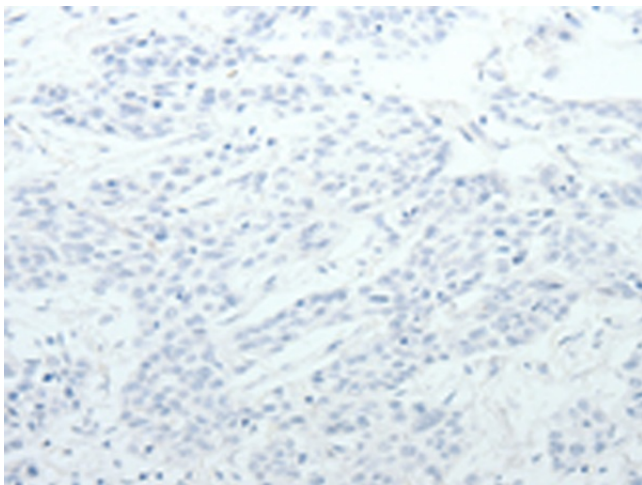
[View online »](#)

Protein Pathways: ECM-receptor interaction, Focal adhesion

Product images:



Immunohistochemistry of paraffin-embedded Human esophagus cancer tissue using TA323051 (TNC Antibody) at dilution 1/30 (Original magnification: ×200)



Immunohistochemistry of paraffin-embedded Human esophagus cancer tissue using TA323051 (TNC Antibody) at dilution 1/30, treated with synthetic peptide. (Original magnification: ×200)