

## Product datasheet for **TA323005**

### p95 NBS1 (NBN) Rabbit Polyclonal Antibody

#### Product data:

Product Type:	Primary Antibodies
Applications:	IHC
Recommended Dilution:	IHC: 25-100 Positive control: Human liver cancer Predicted cell location: Cytoplasm
Reactivity:	Human, Mouse, Rat
Host:	Rabbit
Isotype:	IgG
Clonality:	Polyclonal
Immunogen:	Synthetic peptide corresponding to a region derived from 729-743 amino acids of human nibrin
Formulation:	PBS pH7.3, 0.05% NaN <sub>3</sub> , 50% glycerol
Concentration:	lot specific
Purification:	Antigen affinity purification
Conjugation:	Unconjugated
Storage:	Store at -20°C as received.
Stability:	Stable for 12 months from date of receipt.
Gene Name:	nibrin
Database Link:	<a href="#">NP_002476</a> <a href="#">Entrez Gene 27354 MouseEntrez Gene 85482 RatEntrez Gene 4683 Human O60934</a>
Background:	Mutations in this gene are associated with Nijmegen breakage syndrome; an autosomal recessive chromosomal instability syndrome characterized by microcephaly; growth retardation; immunodeficiency; and cancer predisposition. The encoded protein is a member of the MRE11/RAD50 double-strand break repair complex which consists of 5 proteins. This gene product is thought to be involved in DNA double-strand break repair and DNA damage-induced checkpoint activation.
Synonyms:	AT-V1; AT-V2; ATV; NBS; NBS1; P95

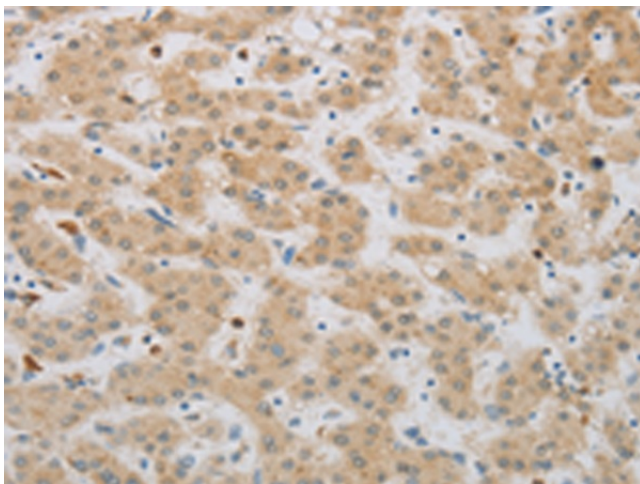


[View online »](#)

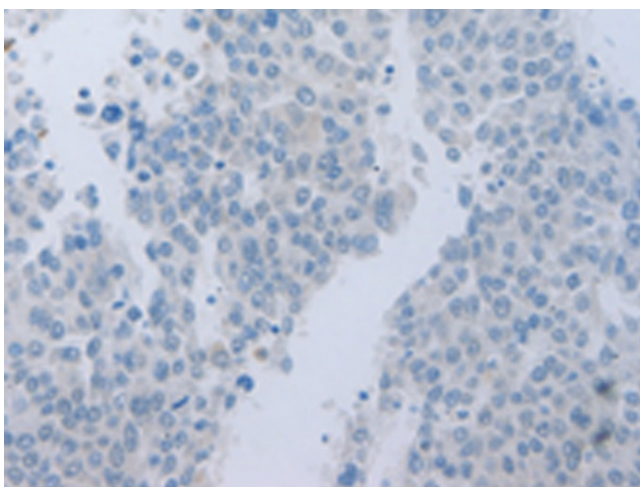
Protein Families: Druggable Genome

Protein Pathways: Homologous recombination

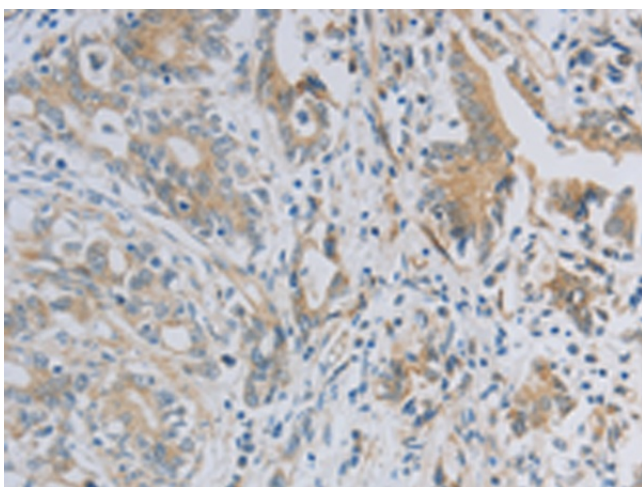
### Product images:



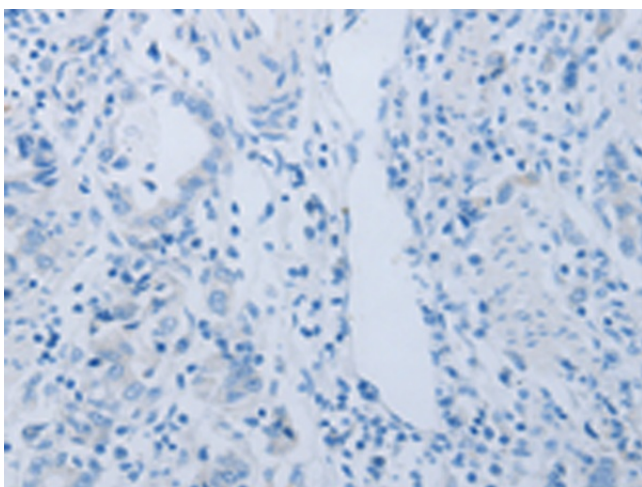
Immunohistochemistry of paraffin-embedded Human liver cancer tissue using TA323005 (NBN Antibody) at dilution 1/50 (Original magnification: ×200)



Immunohistochemistry of paraffin-embedded Human liver cancer tissue using TA323005 (NBN Antibody) at dilution 1/50, treated with synthetic peptide. (Original magnification: ×200)



Immunohistochemistry of paraffin-embedded Human gastric cancer tissue using TA323005 (NBN Antibody) at dilution 1/50 (Original magnification:  $\times 200$ )



Immunohistochemistry of paraffin-embedded Human gastric cancer tissue using TA323005 (NBN Antibody) at dilution 1/50, treated with synthetic peptide. (Original magnification:  $\times 200$ )