

Product datasheet for **TA322909**

BRG1 (SMARCA4) Rabbit Polyclonal Antibody

Product data:

Product Type:	Primary Antibodies
Applications:	IHC, WB
Recommended Dilution:	WB: 200-1000 WB positive control: K562, 293T cells and hepG2 IHC: 50-200 Positive control: Human thyroid cancer Predicted cell location: Cytoplasm, Nucleus
Reactivity:	Human, Mouse, Rat
Host:	Rabbit
Isotype:	IgG
Clonality:	Polyclonal
Immunogen:	Synthetic peptide corresponding to a region derived from 1460-1474 amino acids of Human SWI/SNF related, matrix associated, actin dependent regulator of chromatin, subfamily a, member?
Formulation:	PBS pH7.3, 0.05% NaN ₃ , 50% glycerol
Concentration:	lot specific
Purification:	Antigen affinity purification
Conjugation:	Unconjugated
Storage:	Store at -20°C as received.
Stability:	Stable for 12 months from date of receipt.
Predicted Protein Size:	185 kDa
Gene Name:	SWI/SNF related, matrix associated, actin dependent regulator of chromatin, subfamily a, member 4
Database Link:	NP_003063 Entrez Gene 20586 MouseEntrez Gene 171379 RatEntrez Gene 6597 Human P51532



[View online »](#)

Background:

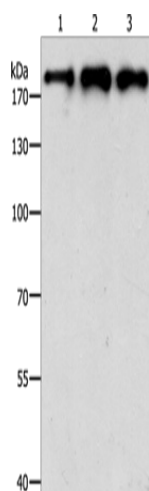
The protein encoded by this gene is a member of the SWI/SNF family of proteins and is similar to the brahma protein of *Drosophila*. Members of this family have helicase and ATPase activities and are thought to regulate transcription of certain genes by altering the chromatin structure around those genes. The encoded protein is part of the large ATP-dependent chromatin remodeling complex SNF/SWI; which is required for transcriptional activation of genes normally repressed by chromatin. In addition; this protein can bind BRCA1; as well as regulate the expression of the tumorigenic protein CD44. Mutations in this gene cause rhabdoid tumor predisposition syndrome type 2. Multiple transcript variants encoding different isoforms have been found for this gene.

Synonyms:

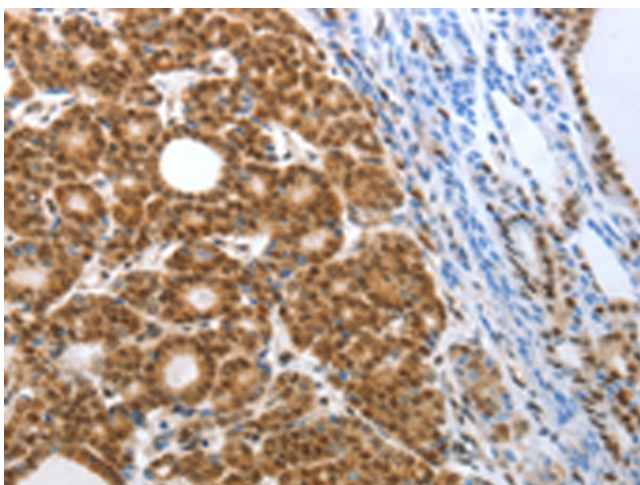
BAF190; BAF190A; BRG1; CSS4; hSNF2b; MRD16; RTPS2; SNF2; SNF2L4; SNF2LB; SWI2

Protein Families:

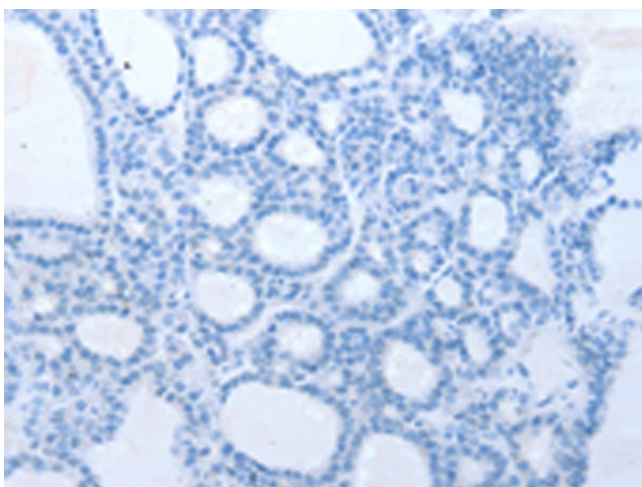
Druggable Genome, Transcription Factors

Product images:

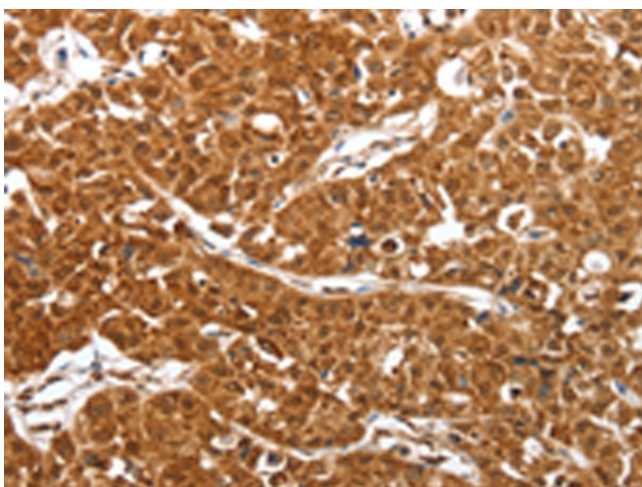
Gel: 8%SDS-PAGE
Lysate: 50 µg
Lane 1-3: K562 cells
293T cells
hepG2 cells
Primary antibody: TA322909 (SMARCA4 Antibody)
at dilution 1/300
Secondary antibody: Goat anti rabbit IgG at
1/8000 dilution
Exposure time: 1 minute



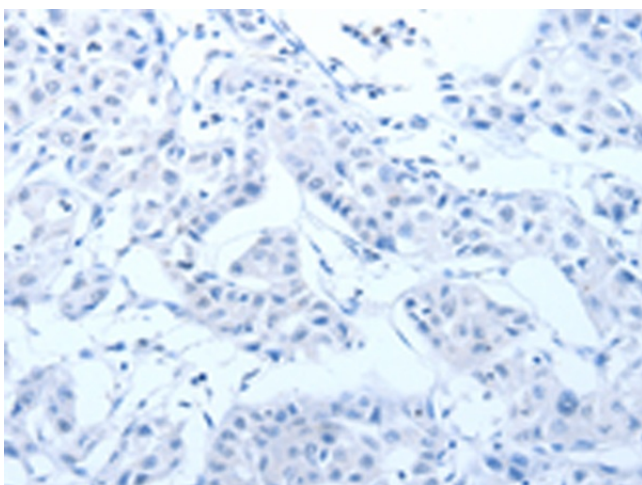
Immunohistochemistry of paraffin-embedded
Human thyroid cancer tissue using TA322909
(SMARCA4 Antibody) at dilution 1/50 (Original
magnification: ×200)



Immunohistochemistry of paraffin-embedded Human thyroid cancer tissue using TA322909 (SMARCA4 Antibody) at dilution 1/50, treated with synthetic peptide. (Original magnification: ×200)



Immunohistochemistry of paraffin-embedded Human lung cancer tissue using TA322909 (SMARCA4 Antibody) at dilution 1/50 (Original magnification: ×200)



Immunohistochemistry of paraffin-embedded Human lung cancer tissue using TA322909 (SMARCA4 Antibody) at dilution 1/50, treated with synthetic peptide. (Original magnification: ×200)