

## Product datasheet for **TA322871**

### TRAF3 Rabbit Polyclonal Antibody

#### Product data:

Product Type:	Primary Antibodies
Applications:	IHC, WB
Recommended Dilution:	WB: 200-1000 WB positive control: Mouse kidney tissue IHC: 25-100 Positive control: Human tonsil Predicted cell location: Cytoplasm
Reactivity:	Human, Mouse
Host:	Rabbit
Isotype:	IgG
Clonality:	Polyclonal
Immunogen:	Synthetic peptide corresponding to a region derived from 1-15 amino acids of human TNF receptor-associated factor 3
Formulation:	PBS pH7.3, 0.05% NaN <sub>3</sub> , 50% glycerol
Concentration:	lot specific
Purification:	Antigen affinity purification
Conjugation:	Unconjugated
Storage:	Store at -20°C as received.
Stability:	Stable for 12 months from date of receipt.
Predicted Protein Size:	64 kDa
Gene Name:	TNF receptor associated factor 3
Database Link:	<a href="#">NP_003291</a> <a href="#">Entrez Gene 22031 Mouse</a> <a href="#">Entrez Gene 7187 Human</a> <a href="#">Q13114</a>



[View online »](#)

**Background:**

The protein encoded by this gene is a member of the TNF receptor associated factor (TRAF) protein family. TRAF proteins associate with; and mediate the signal transduction from; members of the TNF receptor (TNFR) superfamily. This protein participates in the signal transduction of CD40; a TNFR family member important for the activation of the immune response. This protein is found to be a critical component of the lymphotoxin-beta receptor (LTbetaR) signaling complex; which induces NF-kappaB activation and cell death initiated by LTbeta ligation. Epstein-Barr virus encoded latent infection membrane protein-1 (LMP1) can interact with this and several other members of the TRAF family; which may be essential for the oncogenic effects of LMP1. Several alternatively spliced transcript variants encoding three distinct isoforms have been reported.

**Synonyms:**

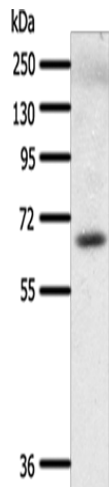
CAP-1; CAP1; CD40bp; CRAF1; IIAE5; LAP1

**Protein Families:**

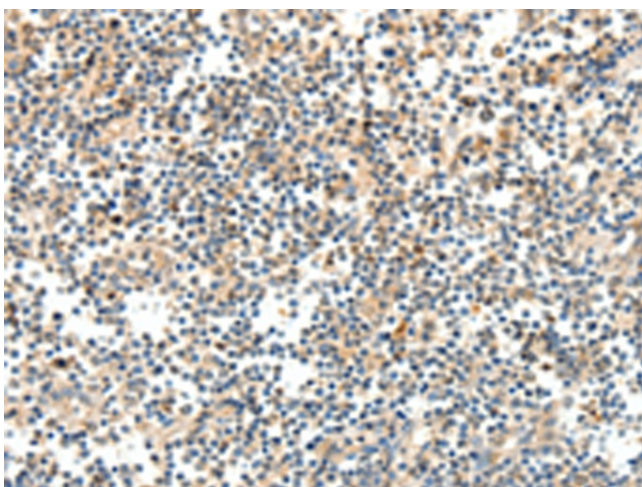
Druggable Genome

**Protein Pathways:**

Pathways in cancer, RIG-I-like receptor signaling pathway, Small cell lung cancer, Toll-like receptor signaling pathway

**Product images:**

Gel: 8+10+12%SDS-PAGE  
Lysate: 60 µg  
Lane: Mouse kidney tissue  
Primary antibody: TA322871 (TRAF3 Antibody) at dilution 1/300  
Secondary antibody: Goat anti rabbit IgG at 1/8000 dilution  
Exposure time: 40 seconds



Immunohistochemistry of paraffin-embedded Human tonsil tissue using TA322871 (TRAF3 Antibody) at dilution 1/25 (Original magnification: ×200)



Immunohistochemistry of paraffin-embedded Human tonsil tissue using TA322871 (TRAF3 Antibody) at dilution 1/25, treated with synthetic peptide. (Original magnification: ×200)