

Product datasheet for **TA322751**

Cathepsin H (CTSH) Rabbit Polyclonal Antibody

Product data:

Product Type:	Primary Antibodies
Applications:	IHC, WB
Recommended Dilution:	WB: 200-1000 WB positive control: Human liver cancer tissue IHC: 10-50 Positive control: Human colon cancer Predicted cell location: Cytoplasm
Reactivity:	Human, Mouse, Rat
Host:	Rabbit
Isotype:	IgG
Clonality:	Polyclonal
Immunogen:	Fusion protein corresponding to a region derived from 116-335 amino acids of human cathepsin H
Formulation:	PBS pH7.3, 0.05% NaN ₃ , 50% glycerol
Concentration:	lot specific
Purification:	Antigen affinity purification
Conjugation:	Unconjugated
Storage:	Store at -20°C as received.
Stability:	Stable for 12 months from date of receipt.
Predicted Protein Size:	37 kDa
Gene Name:	cathepsin H
Database Link:	NP_004381 Entrez Gene 13036 Mouse Entrez Gene 25425 Rat Entrez Gene 1512 Human P09668



[View online »](#)

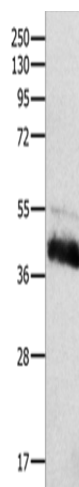
Background: The protein encoded by this gene is a lysosomal cysteine proteinase important in the overall degradation of lysosomal proteins. It is composed of a dimer of disulfide-linked heavy and light chains; both produced from a single protein precursor. The encoded protein; which belongs to the peptidase C1 protein family; can act both as an aminopeptidase and as an endopeptidase. Increased expression of this gene has been correlated with malignant progression of prostate tumors.

Synonyms: ACC-4; ACC-5; ACC4; ACC5; CPSB

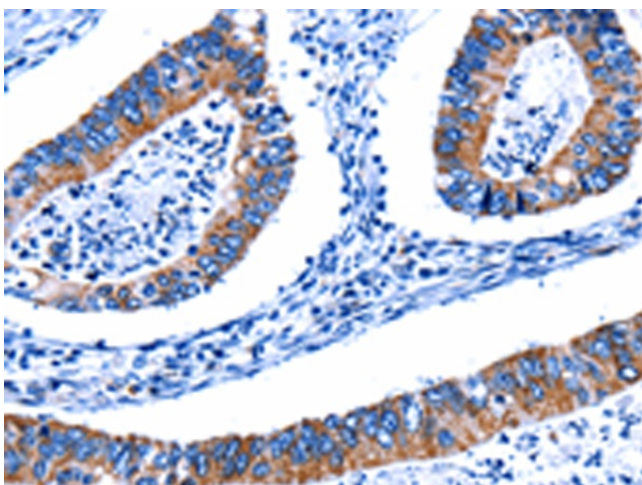
Protein Families: Druggable Genome, Protease

Protein Pathways: Lysosome

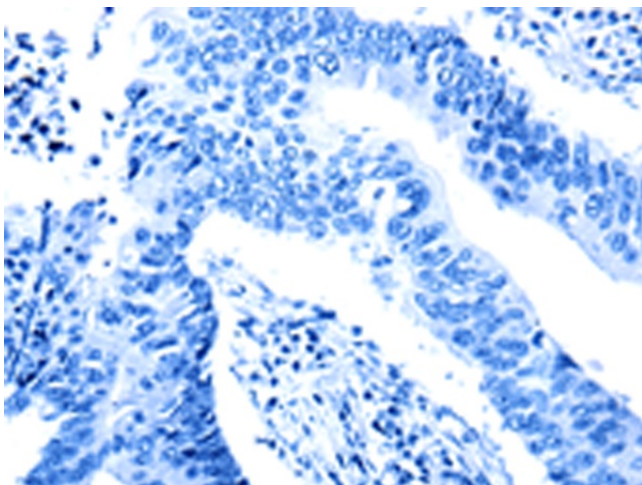
Product images:



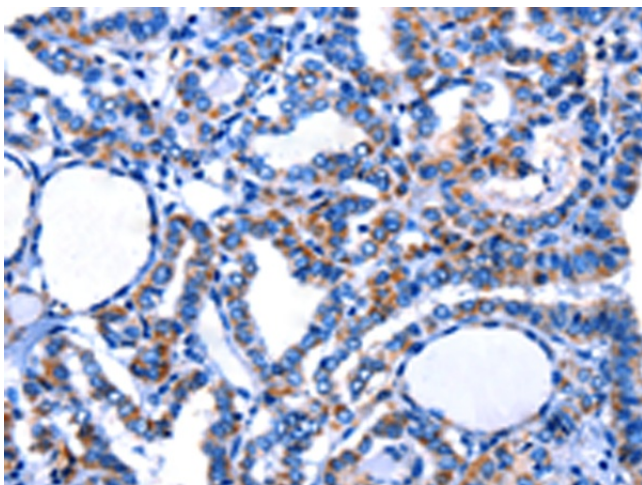
Gel: 10%SDS-PAGE
Lysate: 60 μ g
Lane: Human liver cancer tissue
Primary antibody: TA322751 (CTSH Antibody) at dilution 1/100
Secondary antibody: Goat anti rabbit IgG at 1/8000 dilution
Exposure time: 1 minute



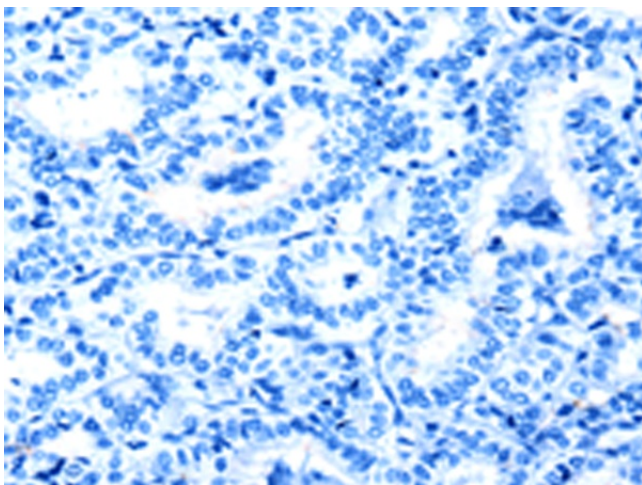
Immunohistochemistry of paraffin-embedded Human colon cancer tissue using TA322751 (CTSH Antibody) at dilution 1/5 (Original magnification: \times 200)



Immunohistochemistry of paraffin-embedded Human colon cancer tissue using TA322751 (CTSH Antibody) at dilution 1/5, treated with fusion protein. (Original magnification: $\times 200$)



Immunohistochemistry of paraffin-embedded Human thyroid cancer tissue using TA322751 (CTSH Antibody) at dilution 1/5 (Original magnification: $\times 200$)



Immunohistochemistry of paraffin-embedded Human thyroid cancer tissue using TA322751 (CTSH Antibody) at dilution 1/5, treated with fusion protein. (Original magnification: $\times 200$)