

## Product datasheet for **TA322624**

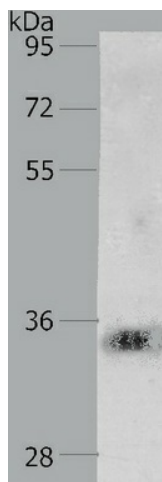
### JUND Rabbit Polyclonal Antibody

#### Product data:

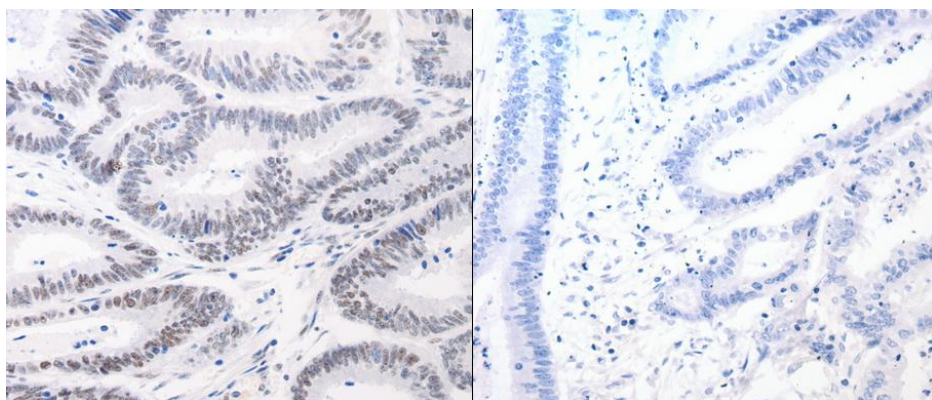
Product Type:	Primary Antibodies
Applications:	IHC, WB
Recommended Dilution:	ELISA: 1:2000-5000, WB: 1:500-2000, IHC: 1:25-100
Reactivity:	Human, Mouse, Rat
Host:	Rabbit
Isotype:	IgG
Clonality:	Polyclonal
Immunogen:	Synthetic peptide corresponding to a region derived from 248-262 amino acids of human Jun D proto-oncogene
Formulation:	PBS pH7.3, 0.05% NaN <sub>3</sub> , 50% glycerol
Concentration:	lot specific
Purification:	Antigen affinity purification
Conjugation:	Unconjugated
Storage:	Store at -20°C as received.
Stability:	Stable for 12 months from date of receipt.
Predicted Protein Size:	35 kDa
Gene Name:	JunD proto-oncogene, AP-1 transcription factor subunit
Database Link:	<a href="#">NP_005345</a> <a href="#">Entrez Gene 16478 Mouse</a> <a href="#">Entrez Gene 24518 Rat</a> <a href="#">Entrez Gene 3727 Human</a> <a href="#">P17535</a>
Background:	The protein encoded by this intronless gene is a member of the JUN family; and a functional component of the AP1 transcription factor complex. It has been proposed to protect cells from p53-dependent senescence and apoptosis. Alternate translation initiation site usage results in the production of different isoforms.
Synonyms:	AP-1
Protein Families:	Druggable Genome, Transcription Factors
Protein Pathways:	MAPK signaling pathway



[View online »](#)

**Product images:**

Predicted band size: 35 kDa. Positive control: Jurkat cell lysate. Recommended dilution: 1/500-2000. (Gel: 10%SDS-PAGE Lysate: 40 ug per lane Primary antibody: 1/800 dilution Secondary antibody: Goat anti Rabbit IgG - H&L (HRP) at 1/10000 dilution Exposure time: 2 minutes)



Predicted cell location: Nucleus. Positive control: Human colon cancer tissue. Recommended dilution: 1/25-100 The image on the left is immunohistochemistry of paraffin-embedded human colon cancer tissue using JUND antibody at dilution 1/40, on the right is treated with the synthetic peptide. (Original magnification:x200)