

## Product datasheet for **TA322412**

### **TIM 1 (HAVCR1) Rabbit Polyclonal Antibody**

#### **Product data:**

Product Type:	Primary Antibodies
Applications:	IHC, WB
Recommended Dilution:	WB: 1000-5000 WB positive control: K562 and Hela cell lysates IHC: 50-200 Positive control: Human liver cancer Predicted cell location: Cytoplasm
Reactivity:	Human
Host:	Rabbit
Isotype:	IgG
Clonality:	Polyclonal
Immunogen:	Synthetic peptide corresponding to a region derived from 72-89 amino acids of Human hepatitis A virus cellular receptor 1
Formulation:	PBS pH7.3, 0.05% NaN <sub>3</sub> , 50% glycerol
Concentration:	lot specific
Purification:	Antigen affinity purification
Conjugation:	Unconjugated
Storage:	Store at -20°C as received.
Stability:	Stable for 12 months from date of receipt.
Predicted Protein Size:	39 kDa
Gene Name:	hepatitis A virus cellular receptor 1
Database Link:	<a href="#">NP_036338</a> <a href="#">Entrez Gene 26762 Human</a> <a href="#">Q96D42</a>



[View online »](#)

**Background:**

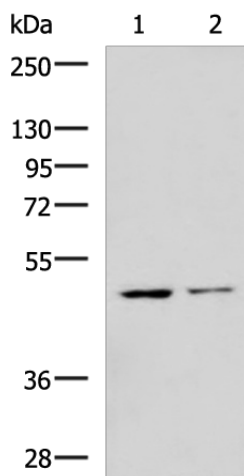
The protein encoded by this gene is a membrane receptor for both human hepatitis A virus (HHAV) and TIMD4. The encoded protein may be involved in the moderation of asthma and allergic diseases. The reference genome represents an allele that retains a MTTVP amino acid segment that confers protection against atopy in HHAV seropositive individuals. Three transcript variants encoding the same protein have been found for this gene.?

**Synonyms:**

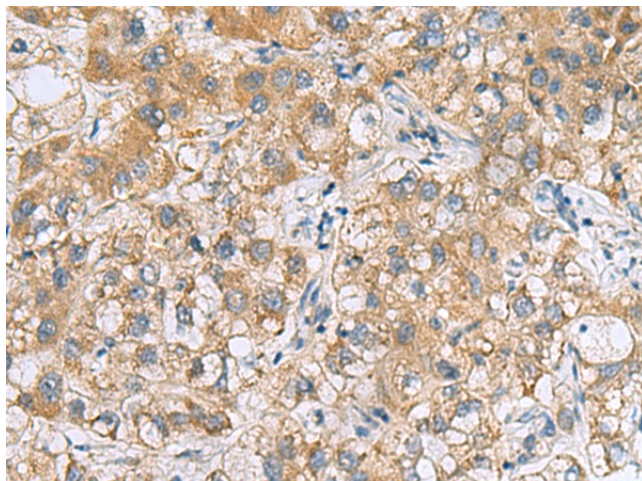
HAVCR; HAVCR-1; KIM-1; KIM1; TIM; TIM-1; TIM1; TIMD-1; TIMD1

**Protein Families:**

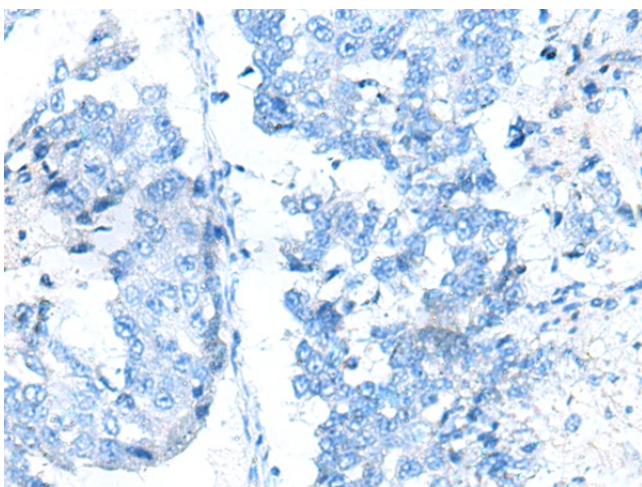
Druggable Genome, Transmembrane

**Product images:**


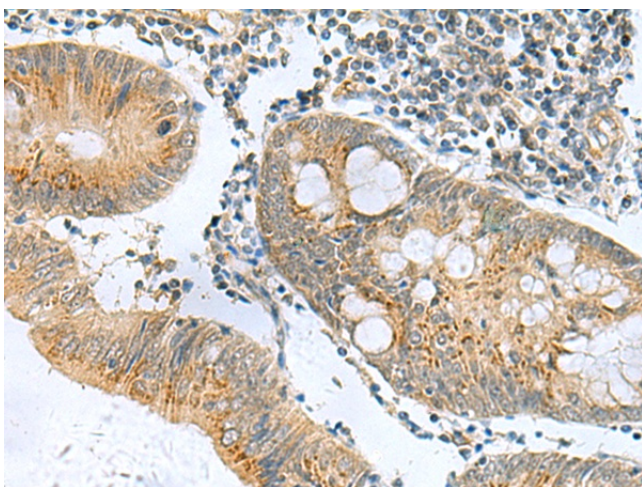
Gel: 8%SDS-PAGE  
 Lysate: 40 µg  
 Lane 1-2: K562 and Hela cell lysates  
 Primary antibody: TA322412 (HAVCR1 Antibody) at dilution 1/1800  
 Secondary antibody: Goat anti rabbit IgG at 1/5000 dilution  
 Exposure time: 10 seconds



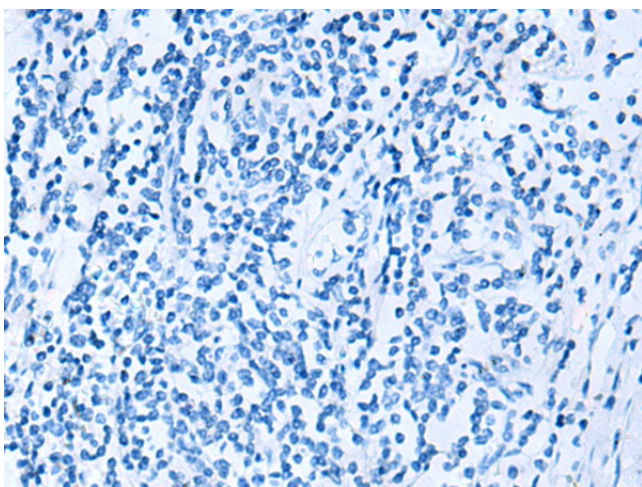
Immunohistochemistry of paraffin-embedded Human liver cancer tissue using TA322412 (HAVCR1 Antibody) at dilution 1/80 (Original magnification: ×200)



Immunohistochemistry of paraffin-embedded Human liver cancer tissue using TA322412 (HAVCR1 Antibody) at dilution 1/80, treated with synthetic peptide. (Original magnification: ×200)



Immunohistochemistry of paraffin-embedded Human colorectal cancer tissue using TA322412 (HAVCR1 Antibody) at dilution 1/80 (Original magnification: ×200)



Immunohistochemistry of paraffin-embedded Human colorectal cancer tissue using TA322412 (HAVCR1 Antibody) at dilution 1/80, treated with synthetic peptide. (Original magnification: ×200)