

## Product datasheet for **TA321977**

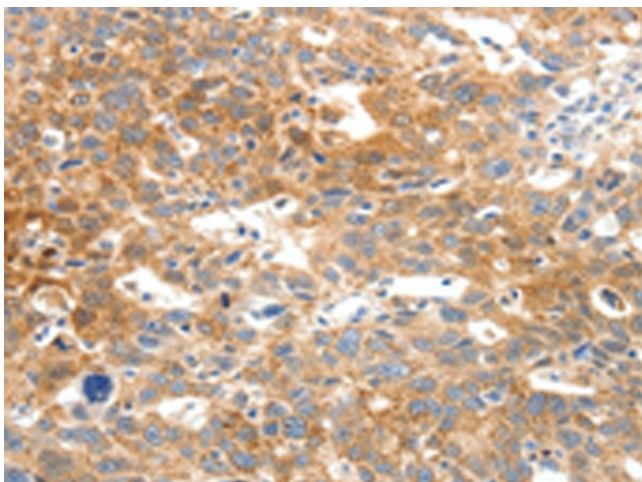
### Nav1.5 (SCN5A) Rabbit Polyclonal Antibody

#### Product data:

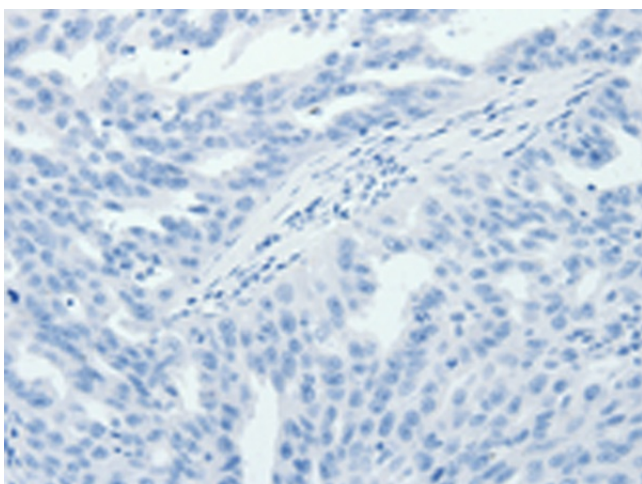
Product Type:	Primary Antibodies
Applications:	IHC
Recommended Dilution:	IHC: 25-100 Positive control: Human ovarian cancer Predicted cell location: Cytoplasm
Reactivity:	Human, Mouse, Rat
Host:	Rabbit
Isotype:	IgG
Clonality:	Polyclonal
Immunogen:	Synthetic peptide corresponding to a region derived from 1860-1874 amino acids of human sodium channel, voltage-gated, type V, alpha subunit
Formulation:	PBS pH7.3, 0.05% NaN <sub>3</sub> , 50% glycerol
Concentration:	lot specific
Purification:	Antigen affinity purification
Conjugation:	Unconjugated
Storage:	Store at -20°C as received.
Stability:	Stable for 12 months from date of receipt.
Gene Name:	sodium voltage-gated channel alpha subunit 5
Database Link:	<a href="#">NP_000326</a> <a href="#">Entrez Gene 20271 Mouse</a> <a href="#">Entrez Gene 25665 Rat</a> <a href="#">Entrez Gene 6331 Human</a> <a href="#">Q14524</a>
Background:	The protein encoded by this gene is an integral membrane protein and tetrodotoxin-resistant voltage-gated sodium channel subunit. This protein is found primarily in cardiac muscle and is responsible for the initial upstroke of the action potential in an electrocardiogram. Defects in this gene are a cause of long QT syndrome type 3 (LQT3); an autosomal dominant cardiac disease. Alternative splicing results in several transcript variants encoding different isoforms.
Synonyms:	CDCD2; CMD1E; CMPD2; HB1; HB2; HBBD; HH1; ICCD; IVF; LQT3; Nav1.5; PFHB1; SSS1; VF1
Protein Families:	Druggable Genome, Ion Channels: Sodium, Transmembrane



[View online »](#)

**Product images:**

Immunohistochemistry of paraffin-embedded Human ovarian cancer tissue using TA321977 (SCN5A Antibody) at dilution 1/25 (Original magnification:  $\times 200$ )



Immunohistochemistry of paraffin-embedded Human ovarian cancer tissue using TA321977 (SCN5A Antibody) at dilution 1/25, treated with synthetic peptide. (Original magnification:  $\times 200$ )