

## Product datasheet for **TA321969**

### ACAT1 (ACACA) Rabbit Polyclonal Antibody

#### Product data:

Product Type:	Primary Antibodies
Applications:	WB
Recommended Dilution:	WB: 1:500-1000
Reactivity:	Human
Host:	Rabbit
Isotype:	IgG
Clonality:	Polyclonal
Immunogen:	Peptide sequence around aa.78-82(S-M-S-G-L) derived from Human Acetyl-CoA Carboxylase.
Formulation:	PBS pH7.3, 0.05% NaN <sub>3</sub> , 50% glycerol
Concentration:	lot specific
Purification:	Antigen affinity purification
Conjugation:	Unconjugated
Storage:	Store at -20°C as received.
Stability:	Stable for 12 months from date of receipt.
Predicted Protein Size:	266 kDa
Gene Name:	acetyl-CoA carboxylase alpha
Database Link:	<a href="#">NP_942131</a> <a href="#">Entrez Gene 31 Human Q13085</a>

**Background:** Acetyl-CoA carboxylase (ACC) is a complex multifunctional enzyme system. ACC is a biotin-containing enzyme which catalyzes the carboxylation of acetyl-CoA to malonyl-CoA, the rate-limiting step in fatty acid synthesis. There are two ACC forms, alpha and beta, encoded by two different genes. ACC-alpha is highly enriched in lipogenic tissues. The enzyme is under long term control at the transcriptional and translational levels and under short term regulation by the phosphorylation/dephosphorylation of targeted serine residues and by allosteric transformation by citrate or palmitoyl-CoA. Multiple alternatively spliced transcript variants divergent in the 5' sequence and encoding distinct isoforms have been found for this gene.

**Synonyms:** ACAC; ACACAD; ACC; ACC1; ACCA

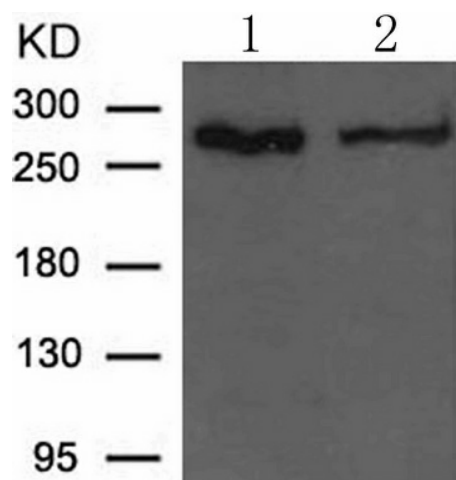


[View online »](#)

Protein Families: Druggable Genome

Protein Pathways: Fatty acid biosynthesis, Insulin signaling pathway, Metabolic pathways, Propanoate metabolism, Pyruvate metabolism

### Product images:



Predicted band size: 266 kDa. Positive control: Heia and HUVEC cells lysate. Recommended dilution: 1/ 500-1000. (Gel: 8%SDS-PAGE Lane 1, 2: Heia and HUVEC cells lysate Lysates: 30 ug per lane Primary antibody: 1/500 dilution Secondary antibody: Goat anti Rabbit IgG - H&L (HRP) at 1/10000 dilution Exposure time: 1 minute)