

Product datasheet for **TA321955**

AADACL2 Rabbit Polyclonal Antibody

Product data:

Product Type:	Primary Antibodies
Applications:	IHC
Recommended Dilution:	IHC: 25-100 Positive control: Human colon cancer Predicted cell location: Cytoplasm
Reactivity:	Human
Host:	Rabbit
Isotype:	IgG
Clonality:	Polyclonal
Immunogen:	Fusion protein corresponding to C terminal 222 amino acids of human arylacetamide deacetylase-like 2
Formulation:	PBS pH7.3, 0.05% NaN ₃ , 50% glycerol
Concentration:	lot specific
Purification:	Antigen affinity purification
Conjugation:	Unconjugated
Storage:	Store at -20°C as received.
Stability:	Stable for 12 months from date of receipt.
Gene Name:	arylacetamide deacetylase like 2
Database Link:	NP_997248 Entrez Gene 344752 Human Q6P093



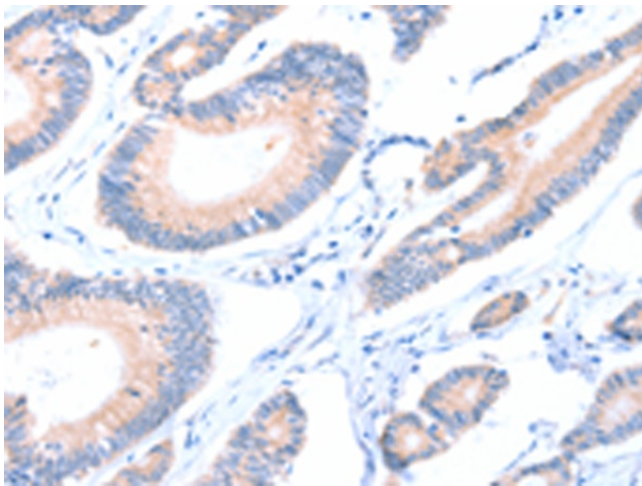
[View online »](#)

Background:

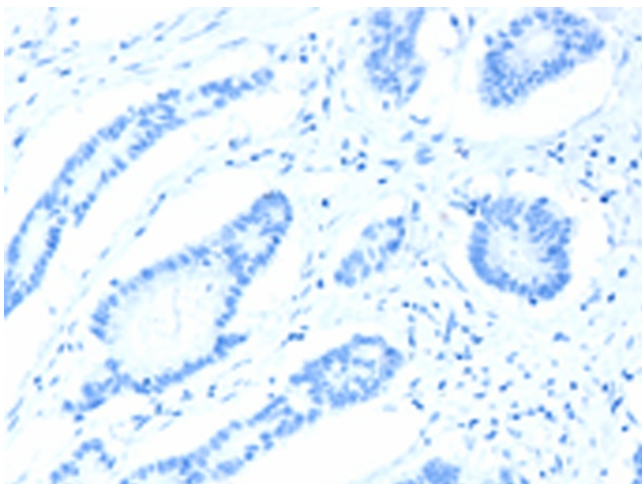
AADAC is a 45 kDa membrane-associated hydrolase highly expressed in the human liver that has been implicated in the hydrolysis of arylacetamide xenobiotics including flutamide and phenacetin.⁵⁵⁶⁻⁵⁶⁰AADAC is highly homologous to several related lipases, AADACL1, 2, and 4, the latter two of which remain completely unannotated. Overexpression of AADAC in a rat hepatoma cell line produces changes in cellular TG levels, apolipoprotein B secretion, and fatty acid oxidation, but the mechanism for these effects remains unclear.⁵⁶¹ Candidate endogenous substrates, selective inhibitors, or knockout mice have not, to our knowledge, been described for AADAC or the related enzymes AADACL2 and AADACL4.

Synonyms:

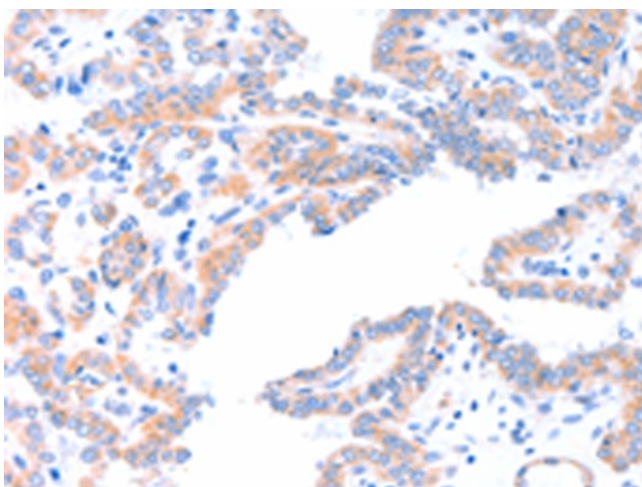
MGC72001

Product images:

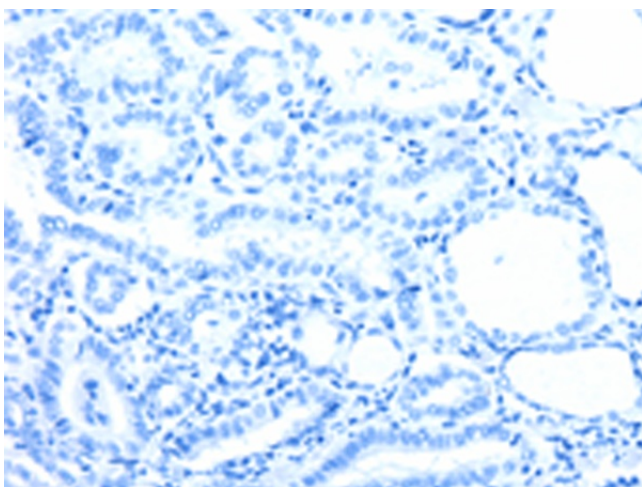
Immunohistochemistry of paraffin-embedded Human colon cancer tissue using TA321955 (AADACL2 Antibody) at dilution 1/25 (Original magnification: x200)



Immunohistochemistry of paraffin-embedded Human colon cancer tissue using TA321955 (AADACL2 Antibody) at dilution 1/25, treated with fusion protein. (Original magnification: x200)



Immunohistochemistry of paraffin-embedded Human thyroid cancer tissue using TA321955 (AADACL2 Antibody) at dilution 1/25 (Original magnification: ×200)



Immunohistochemistry of paraffin-embedded Human thyroid cancer tissue using TA321955 (AADACL2 Antibody) at dilution 1/25, treated with fusion protein. (Original magnification: ×200)