

Product datasheet for **TA321934**

IL23 Receptor (IL23R) Rabbit Polyclonal Antibody

Product data:

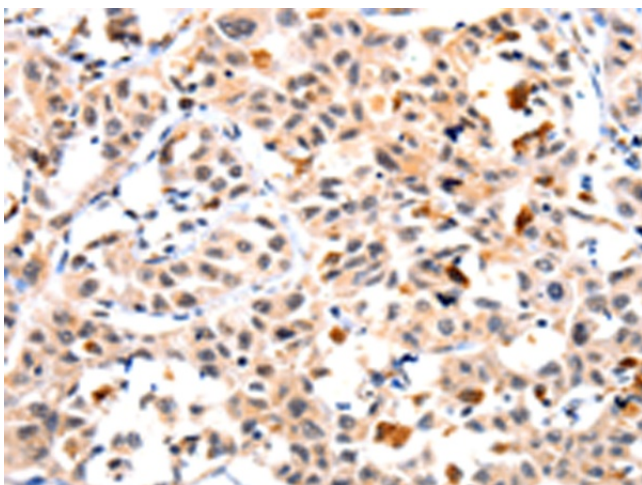
Product Type:	Primary Antibodies
Applications:	IHC
Recommended Dilution:	IHC: 10-50 Positive control: Human lung cancer Predicted cell location: Cytoplasm, Nucleus
Reactivity:	Human
Host:	Rabbit
Isotype:	IgG
Clonality:	Polyclonal
Immunogen:	Fusion protein corresponding to a region derived from 31-227 amino acids of Human Interleukin-23 receptor
Formulation:	PBS pH7.3, 0.05% NaN ₃ , 50% glycerol
Concentration:	lot specific
Purification:	Antigen affinity purification
Conjugation:	Unconjugated
Storage:	Store at -20°C as received.
Stability:	Stable for 12 months from date of receipt.
Gene Name:	interleukin 23 receptor
Database Link:	NP_653302 Entrez Gene 149233 Human Q5VWK5
Background:	The protein encoded by this gene is a subunit of the receptor for IL23A/IL23. This protein pairs with the receptor molecule IL12RB1/IL12Rbeta1; and both are required for IL23A signaling. This protein associates constitutively with Janus kinase 2 (JAK2); and also binds to transcription activator STAT3 in a ligand-dependent manner.
Synonyms:	interleukin 23 receptor; OTTHUMP00000010660
Protein Families:	Druggable Genome, Transmembrane



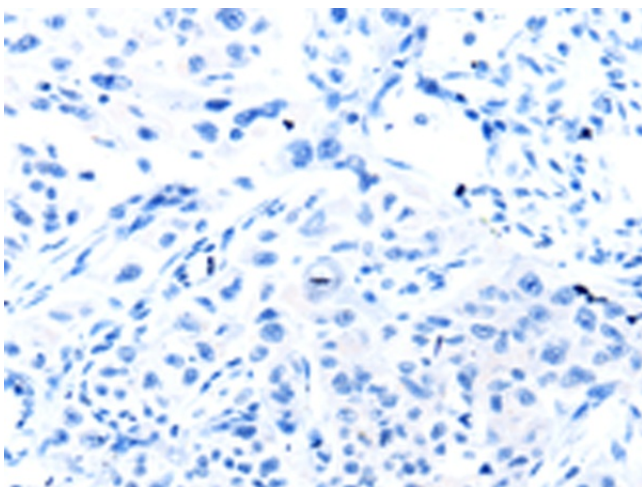
[View online »](#)

Protein Pathways: Cytokine-cytokine receptor interaction, Jak-STAT signaling pathway

Product images:



Immunohistochemistry of paraffin-embedded Human lung cancer tissue using TA321934 (IL23R Antibody) at dilution 1/10 (Original magnification: ×200)



Immunohistochemistry of paraffin-embedded Human lung cancer tissue using TA321934 (IL23R Antibody) at dilution 1/10, treated with fusion protein. (Original magnification: ×200)