

Product datasheet for **TA321881**

RAB22A Rabbit Polyclonal Antibody

Product data:

Product Type:	Primary Antibodies
Applications:	IHC, WB
Recommended Dilution:	WB: 500-2000 WB positive control: MCF-7 cells IHC: 25-100 Positive control: Human liver cancer Predicted cell location: Cytoplasm
Reactivity:	Human, Mouse
Host:	Rabbit
Isotype:	IgG
Clonality:	Polyclonal
Immunogen:	Synthetic peptide corresponding to a region derived from 128-140 amino acids of Human Ras-related protein Rab-22A
Formulation:	PBS pH7.3, 0.05% NaN ₃ , 50% glycerol
Concentration:	lot specific
Purification:	Antigen affinity purification
Conjugation:	Unconjugated
Storage:	Store at -20°C as received.
Stability:	Stable for 12 months from date of receipt.
Predicted Protein Size:	22 kDa
Gene Name:	RAB22A, member RAS oncogene family
Database Link:	NP_065724 Entrez Gene 19334 Mouse Entrez Gene 57403 Human Q9UL26
Background:	The protein encoded by this gene is a member of the RAB family of small GTPases. The GTP-bound form of the encoded protein has been shown to interact with early-endosomal antigen 1, and may be involved in the trafficking of and interaction between endosomal compartments.



[View online »](#)

Synonyms: MGC16770

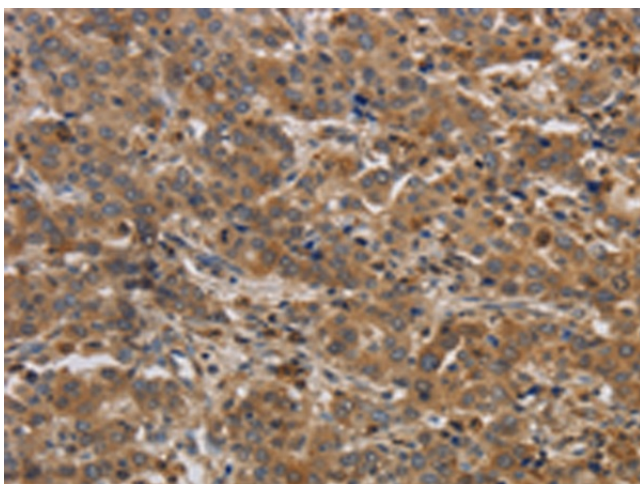
Protein Families: Druggable Genome

Protein Pathways: Endocytosis

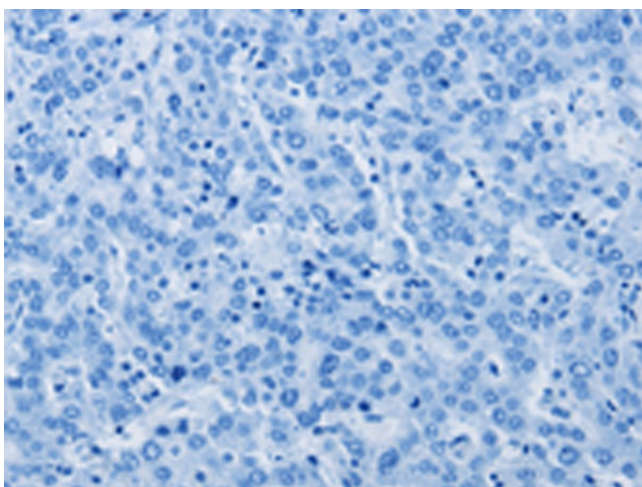
Product images:



Gel: 12%SDS-PAGE
Lysate: 40 μ g
Lane: MCF7 cells
Primary antibody: TA321881 (RAB22A Antibody)
at dilution 1/650
Secondary antibody: Goat anti rabbit IgG at
1/8000 dilution
Exposure time: 30 seconds



Immunohistochemistry of paraffin-embedded
Human liver cancer tissue using TA321881
(RAB22A Antibody) at dilution 1/20 (Original
magnification: \times 200)



Immunohistochemistry of paraffin-embedded Human liver cancer tissue using TA321881 (RAB22A Antibody) at dilution 1/20, treated with synthetic peptide. (Original magnification: $\times 200$)