

## Product datasheet for **TA321725**

### Visfatin (NAMPT) Rabbit Polyclonal Antibody

#### Product data:

Product Type:	Primary Antibodies
Applications:	IHC, WB
Recommended Dilution:	WB: 200-1000 WB positive control: A375 and mouse liver tissue IHC: 15-50 Positive control: Human cervical cancer Predicted cell location: Cytoplasm
Reactivity:	Human, Mouse, Rat
Host:	Rabbit
Isotype:	IgG
Clonality:	Polyclonal
Immunogen:	Fusion protein corresponding to C terminal 250 amino acids of human nicotinamide phosphoribosyltransferase
Formulation:	PBS pH7.3, 0.05% NaN <sub>3</sub> , 50% glycerol
Concentration:	lot specific
Purification:	Antigen affinity purification
Conjugation:	Unconjugated
Storage:	Store at -20°C as received.
Stability:	Stable for 12 months from date of receipt.
Predicted Protein Size:	56 kDa
Gene Name:	nicotinamide phosphoribosyltransferase
Database Link:	<a href="#">NP_005737</a> <a href="#">Entrez Gene 59027 Mouse</a> <a href="#">Entrez Gene 297508 Rat</a> <a href="#">Entrez Gene 10135 Human</a> <a href="#">P43490</a>



[View online »](#)

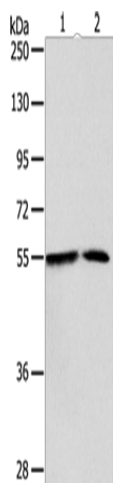
**Background:** This gene encodes a protein that catalyzes the condensation of nicotinamide with 5-phosphoribosyl-1-pyrophosphate to yield nicotinamide mononucleotide; one step in the biosynthesis of nicotinamide adenine dinucleotide. The protein belongs to the nicotinic acid phosphoribosyltransferase (NAPRTase) family and is thought to be involved in many important biological processes; including metabolism; stress response and aging. This gene has a pseudogene on chromosome 10.?

**Synonyms:** 1110035O14Rik; PBEF; PBEF1; VF; VISFATIN

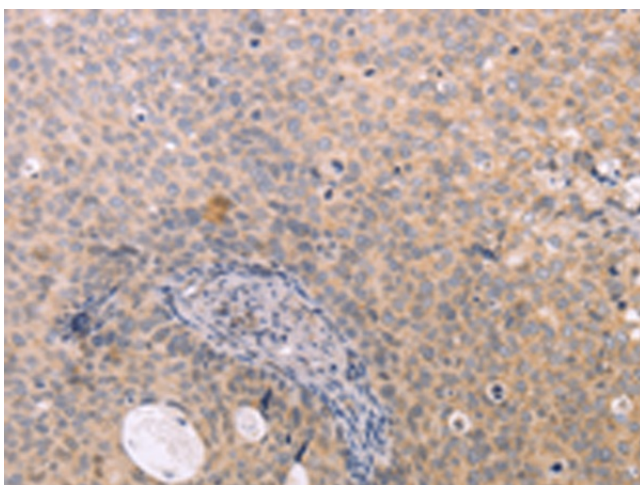
**Protein Families:** Druggable Genome

**Protein Pathways:** Nicotinate and nicotinamide metabolism

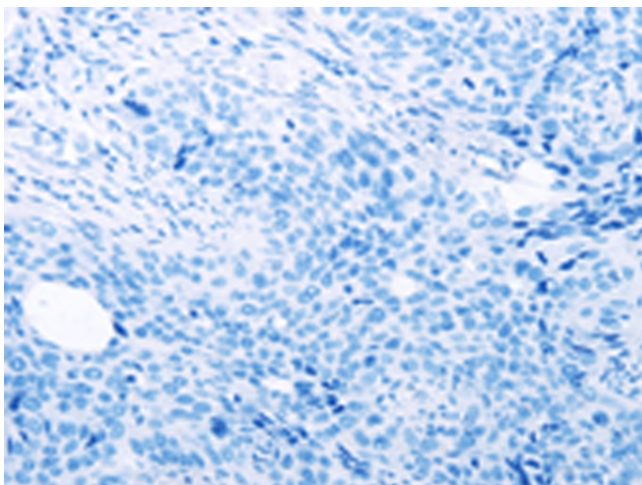
### Product images:



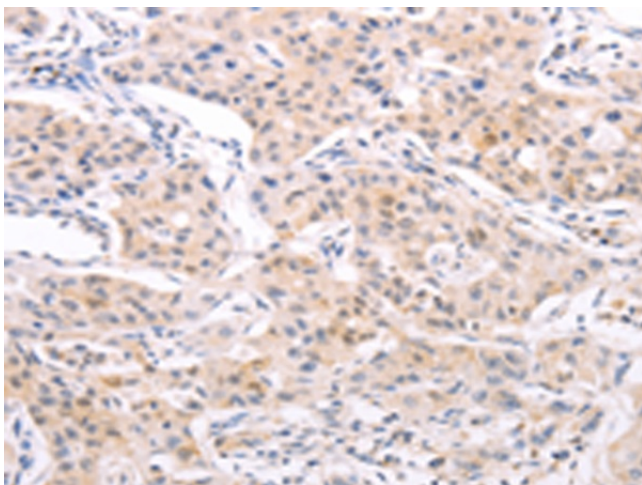
Gel: 10%SDS-PAGE  
Lysate: 40 µg  
Lane 1-2: A375 cells  
mouse liver tissue  
Primary antibody: TA321725 (NAMPT Antibody) at dilution 1/350  
Secondary antibody: Goat anti rabbit IgG at 1/8000 dilution  
Exposure time: 2 minutes



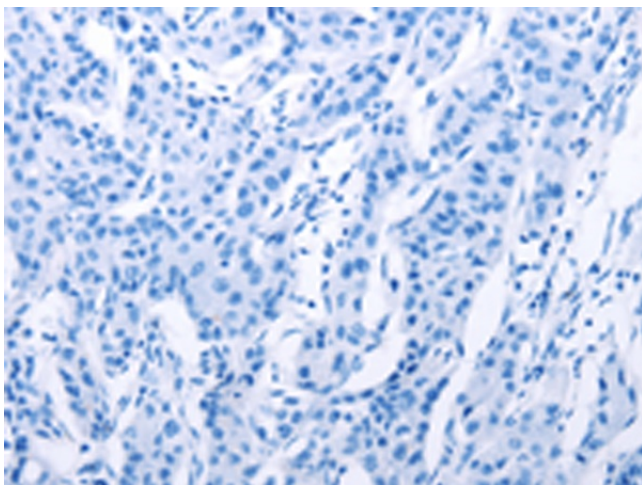
Immunohistochemistry of paraffin-embedded Human cervical cancer tissue using TA321725 (NAMPT Antibody) at dilution 1/15 (Original magnification: ×200)



Immunohistochemistry of paraffin-embedded Human cervical cancer tissue using TA321725 (NAMPT Antibody) at dilution 1/15, treated with fusion protein. (Original magnification: ×200)



Immunohistochemistry of paraffin-embedded Human lung cancer tissue using TA321725 (NAMPT Antibody) at dilution 1/15 (Original magnification: ×200)



Immunohistochemistry of paraffin-embedded Human lung cancer tissue using TA321725 (NAMPT Antibody) at dilution 1/15, treated with fusion protein. (Original magnification: ×200)