

## Product datasheet for **TA321712**

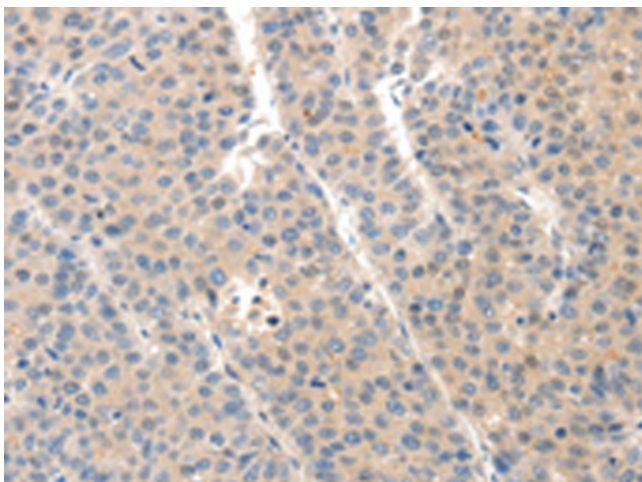
### SLC20A1 Rabbit Polyclonal Antibody

#### Product data:

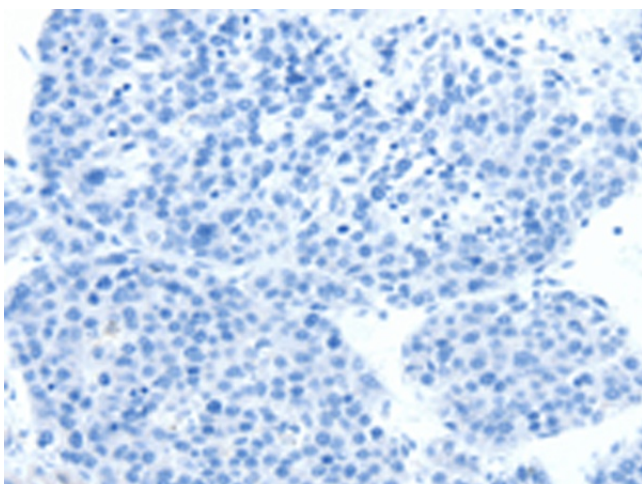
Product Type:	Primary Antibodies
Applications:	IHC
Recommended Dilution:	IHC: 25-100 Positive control: Human liver cancer Predicted cell location: Cytoplasm
Reactivity:	Human, Mouse, Rat
Host:	Rabbit
Isotype:	IgG
Clonality:	Polyclonal
Immunogen:	Synthetic peptide corresponding to a region derived from 496-509 amino acids of human solute carrier family 20 (phosphate transporter), member 1
Formulation:	PBS pH7.3, 0.05% NaN <sub>3</sub> , 50% glycerol
Concentration:	lot specific
Purification:	Antigen affinity purification
Conjugation:	Unconjugated
Storage:	Store at -20°C as received.
Stability:	Stable for 12 months from date of receipt.
Gene Name:	solute carrier family 20 member 1
Database Link:	<a href="#">NP_005406</a> <a href="#">Entrez Gene 20515 Mouse</a> <a href="#">Entrez Gene 81826 Rat</a> <a href="#">Entrez Gene 6574 Human</a> <a href="#">Q8WUM9</a>
Background:	The protein encoded by this gene is a sodium-phosphate symporter that absorbs phosphate from interstitial fluid for use in cellular functions such as metabolism; signal transduction; and nucleic acid and lipid synthesis. The encoded protein is also a retroviral receptor; causing human cells to be susceptible to infection by gibbon ape leukemia virus; simian sarcoma-associated virus; feline leukemia virus subgroup B; and 10A1 murine leukemia virus.
Synonyms:	Glvr-1; GLVR1; PiT-1; PIT1
Protein Families:	Druggable Genome, Transmembrane



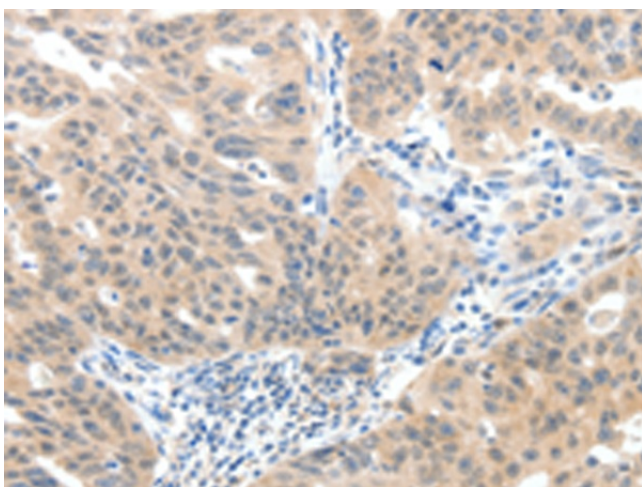
[View online »](#)

**Product images:**

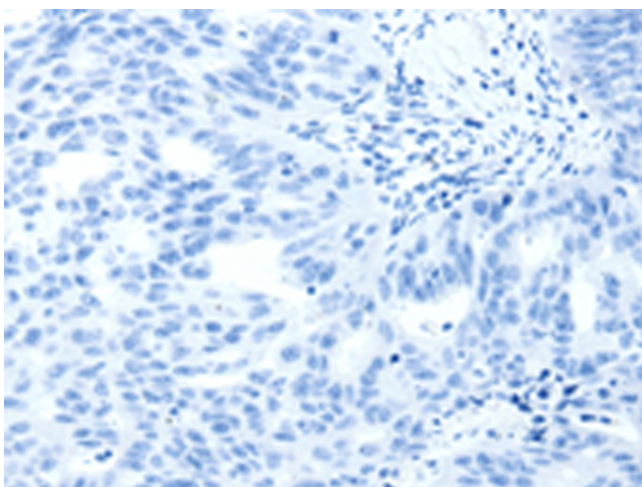
Immunohistochemistry of paraffin-embedded Human liver cancer tissue using TA321712 (SLC20A1 Antibody) at dilution 1/40 (Original magnification:  $\times 200$ )



Immunohistochemistry of paraffin-embedded Human liver cancer tissue using TA321712 (SLC20A1 Antibody) at dilution 1/40, treated with synthetic peptide. (Original magnification:  $\times 200$ )



Immunohistochemistry of paraffin-embedded Human ovarian cancer tissue using TA321712 (SLC20A1 Antibody) at dilution 1/40 (Original magnification: ×200)



Immunohistochemistry of paraffin-embedded Human ovarian cancer tissue using TA321712 (SLC20A1 Antibody) at dilution 1/40, treated with synthetic peptide. (Original magnification: ×200)