

## Product datasheet for **TA321663**

### TRAF6 Rabbit Polyclonal Antibody

#### Product data:

Product Type:	Primary Antibodies
Applications:	IHC, WB
Recommended Dilution:	WB: 500-2000 WB positive control: Human urinary bladder tissue lysate IHC: 50-100 Positive control: Human esophagus cancer Predicted cell location: Cytoplasm
Reactivity:	Human, Mouse, Rat
Host:	Rabbit
Isotype:	IgG
Clonality:	Polyclonal
Immunogen:	Fusion protein corresponding to a region derived from 350-522 amino acids of human TNF receptor-associated factor 6, E3 ubiquitin protein ligase
Formulation:	PBS pH7.3, 0.05% NaN <sub>3</sub> , 50% glycerol
Concentration:	lot specific
Purification:	Antigen affinity purification
Conjugation:	Unconjugated
Storage:	Store at -20°C as received.
Stability:	Stable for 12 months from date of receipt.
Predicted Protein Size:	60 kDa
Gene Name:	TNF receptor associated factor 6
Database Link:	<a href="#">NP_004611</a> <a href="#">Entrez Gene 22034 Mouse</a> <a href="#">Entrez Gene 311245 Rat</a> <a href="#">Entrez Gene 7189 Human</a> <a href="#">Q9Y4K3</a>



[View online »](#)

**Background:**

The protein encoded by this gene is a member of the TNF receptor associated factor (TRAF) protein family. TRAF proteins are associated with; and mediate signal transduction from; members of the TNF receptor superfamily. This protein mediates signaling from members of the TNF receptor superfamily as well as the Toll/IL-1 family. Signals from receptors such as CD40; TNFSF11/RANCE and IL-1 have been shown to be mediated by this protein. This protein also interacts with various protein kinases including IRAK1/IRAK; SRC and PKCzeta; which provides a link between distinct signaling pathways. This protein functions as a signal transducer in the NF-kappaB pathway that activates I kappaB kinase (IKK) in response to proinflammatory cytokines. The interaction of this protein with UBE2N/UBC13; and UBE2V1/UEV1A; which are ubiquitin conjugating enzymes catalyzing the formation of polyubiquitin chains; has been found to be required for IKK activation by this protein. This protein also interacts with the transforming growth factor (TGF) beta receptor complex and is required for Smad-independent activation of the JNK and p38 kinases.

**Synonyms:**

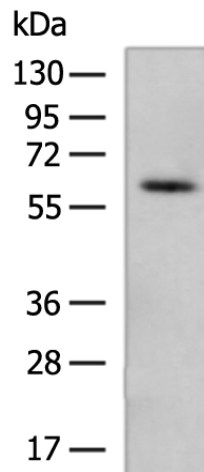
MGC:3310; RNF85

**Protein Families:**

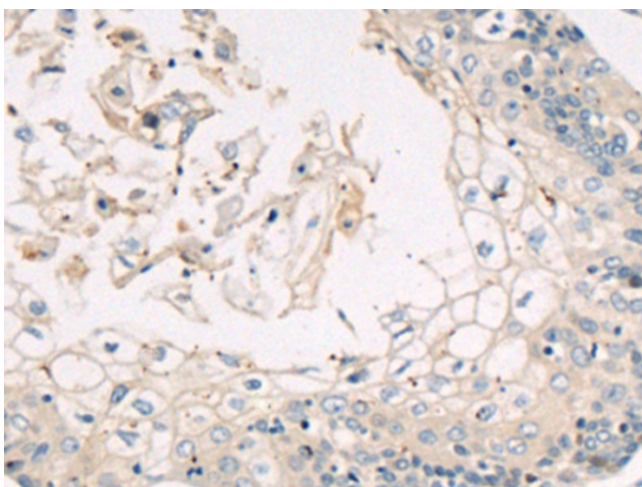
Druggable Genome

**Protein Pathways:**

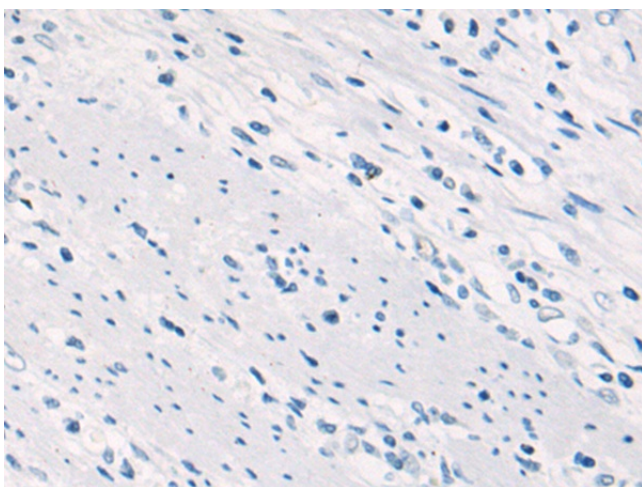
Endocytosis, MAPK signaling pathway, Neurotrophin signaling pathway, NOD-like receptor signaling pathway, Pathways in cancer, RIG-I-like receptor signaling pathway, Small cell lung cancer, Toll-like receptor signaling pathway, Ubiquitin mediated proteolysis

**Product images:**

Gel: 8%SDS-PAGE  
Lysate: 40 µg  
Lane: Human urinary bladder tissue lysate  
Primary antibody: TA321663 (TRAF6 Antibody) at dilution 1/800  
Secondary antibody: Goat anti rabbit IgG at 1/5000 dilution  
Exposure time: 2 minutes



Immunohistochemistry of paraffin-embedded Human esophagus cancer tissue using TA321663 (TRAF6 Antibody) at dilution 1/80 (Original magnification:  $\times 200$ )



Immunohistochemistry of paraffin-embedded Human esophagus cancer tissue using TA321663 (TRAF6 Antibody) at dilution 1/80, treated with fusion protein. (Original magnification:  $\times 200$ )