

Product datasheet for **TA321571**

UCP3 Rabbit Polyclonal Antibody

Product data:

Product Type:	Primary Antibodies
Applications:	WB
Recommended Dilution:	WB: 1:500-2000
Reactivity:	Human, Mouse, Rat
Host:	Rabbit
Isotype:	IgG
Clonality:	Polyclonal
Immunogen:	Fusion protein corresponding to N terminal 110 amino acids of human uncoupling protein 3 (mitochondrial, proton carrier)
Formulation:	PBS pH7.3, 0.05% NaN ₃ , 50% glycerol
Concentration:	lot specific
Purification:	Antigen affinity purification
Conjugation:	Unconjugated
Storage:	Store at -20°C as received.
Stability:	Stable for 12 months from date of receipt.
Predicted Protein Size:	34 kDa
Gene Name:	uncoupling protein 3
Database Link:	NP_003347 Entrez Gene 22229 Mouse Entrez Gene 25708 Rat Entrez Gene 7352 Human P55916



[View online »](#)

Background:

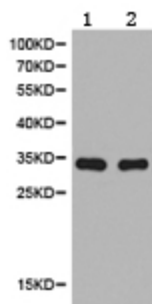
The uncoupling protein UCP1 (formerly designated UCP) is an integral membrane protein unique to brown adipose tissue mitochondria. UCP1 forms a dimer that acts as a proton channel, which can uncouple oxidative phosphorylation by dissipating the electrochemical potential across the inner mitochondrial membrane. This process induces heat production in brown adipose tissue and is involved in regulation of body temperature and glucose metabolism. UCP2 is a structurally related protein that also uncouples mitochondrial respiration. It is more widely expressed in human and mouse tissues, including white adipose tissue and muscle, than is UCP1. UCP2 is thought to play a role in body weight regulation. An additional UCP family member, UCP3, is highly muscle specific and is possibly involved in the uncoupling of oxidative phosphorylation in skeletal muscle.

Synonyms:

SLC25A9

Protein Families:

Druggable Genome

Product images:

Predicted band size: 34 kDa. Positive control: Skeletal muscle tissue and SGC-7901 cell lysate. Recommended dilution: 1/500-2000. (Gel: 10%SDS-PAGE Lane 1: Skeletal muscle tissue lysate Lane 2: SGC-7901 cell lysate Lysates: 40 ug per lane Primary antibody: 1/500 dilution Secondary antibody: Goat anti Rabbit IgG - H&L (HRP) at 1/10000 dilution Exposure time: 1 minute)