

## Product datasheet for **TA321512**

### Protein Phosphatase 1 beta (PPP1CB) Rabbit Polyclonal Antibody

#### Product data:

|                         |   |
|-------------------------|---|
| Product Type:           | Primary Antibodies  |
| Applications:           | IHC, WB   |
| Recommended Dilution:   | WB: 500-2000<br>WB positive control: Hela cells<br>IHC: 25-100<br>Positive control: Human tonsil<br>Predicted cell location: Cytoplasm                                      |
| Reactivity:             | Human, Mouse, Rat   |
| Host:                   | Rabbit  |
| Isotype:                | IgG   |
| Clonality:              | Polyclonal  |
| Immunogen:              | Fusion protein corresponding to N terminal 327 amino acids of human protein phosphatase 1, catalytic subunit, beta isozyme  |
| Formulation:            | PBS pH7.3, 0.05% NaN <sub>3</sub> , 50% glycerol  |
| Concentration:          | lot specific  |
| Purification:           | Antigen affinity purification   |
| Conjugation:            | Unconjugated  |
| Storage:                | Store at -20°C as received.   |
| Stability:              | Stable for 12 months from date of receipt.  |
| Predicted Protein Size: | 37 kDa  |
| Gene Name:              | protein phosphatase 1 catalytic subunit beta  |
| Database Link:          | <a href="#">NP_002700</a><br><a href="#">Entrez Gene 19046 Mouse</a> <a href="#">Entrez Gene 25594 Rat</a> <a href="#">Entrez Gene 5500 Human</a><br><a href="#">P62140</a> |



[View online »](#)

**Background:**

The protein encoded by this gene is one of the three catalytic subunits of protein phosphatase 1 (PP1). PP1 is a serine/threonine specific protein phosphatase known to be involved in the regulation of a variety of cellular processes; such as cell division; glycogen metabolism; muscle contractility; protein synthesis; and HIV-1 viral transcription. Mouse studies suggest that PP1 functions as a suppressor of learning and memory. Two alternatively spliced transcript variants encoding distinct isoforms have been observed.

**Synonyms:**

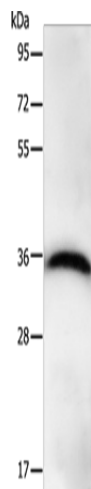
HEL-S-80p; PP-1B; PP1B; PP1beta; PPP1CD

**Protein Families:**

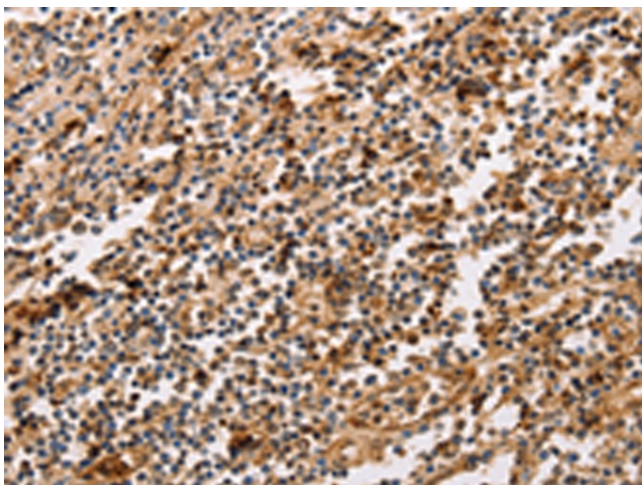
Druggable Genome, Phosphatase

**Protein Pathways:**

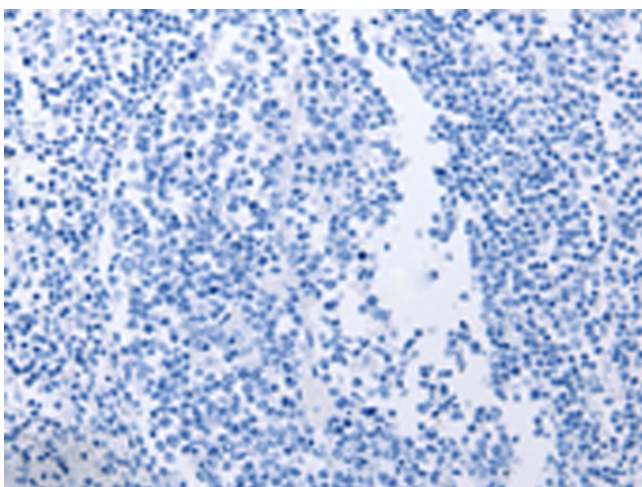
Focal adhesion, Insulin signaling pathway, Long-term potentiation, Oocyte meiosis, Regulation of actin cytoskeleton, Vascular smooth muscle contraction

**Product images:**

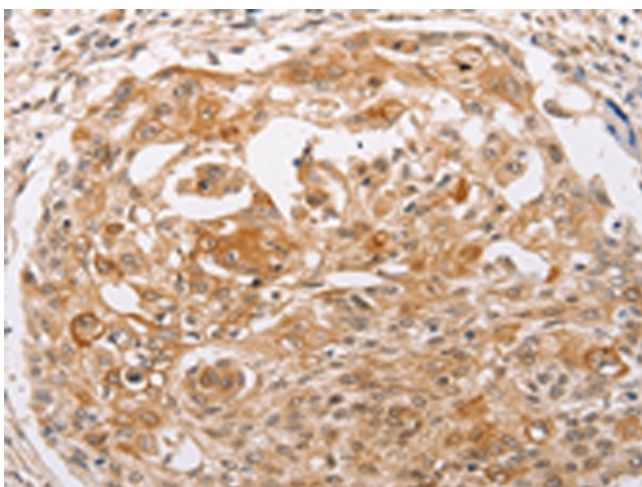
Gel: 10%SDS-PAGE  
Lysate: 40 µg  
Lane: HeLa cells  
Primary antibody: TA321512 (PPP1CB Antibody)  
at dilution 1/450  
Secondary antibody: Goat anti rabbit IgG at  
1/8000 dilution  
Exposure time: 20 seconds



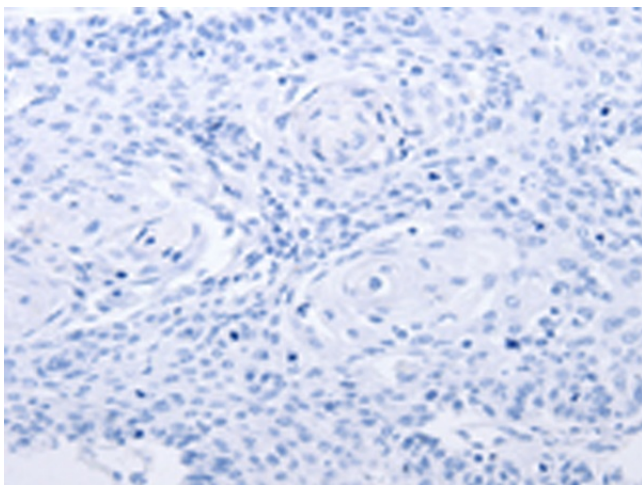
Immunohistochemistry of paraffin-embedded  
Human tonsil tissue using TA321512 (PPP1CB  
Antibody) at dilution 1/30 (Original magnification:  
×200)



Immunohistochemistry of paraffin-embedded Human tonsil tissue using TA321512 (PPP1CB Antibody) at dilution 1/30, treated with fusion protein. (Original magnification:  $\times 200$ )



Immunohistochemistry of paraffin-embedded Human cervical cancer tissue using TA321512 (PPP1CB Antibody) at dilution 1/30 (Original magnification:  $\times 200$ )



Immunohistochemistry of paraffin-embedded Human cervical cancer tissue using TA321512 (PPP1CB Antibody) at dilution 1/30, treated with fusion protein. (Original magnification:  $\times 200$ )