

Product datasheet for **TA321475**

EPCAM Rabbit Polyclonal Antibody

Product data:

Product Type:	Primary Antibodies
Applications:	IHC, WB
Recommended Dilution:	WB: 1000-5000 WB positive control: 231 cell lysate IHC: 50-100 Positive control: Human thyroid cancer Predicted cell location: Cell membrane
Reactivity:	Human, Mouse, Rat
Host:	Rabbit
Isotype:	IgG
Clonality:	Polyclonal
Immunogen:	Synthetic peptide corresponding to a region derived from 300-314 amino acids of Human Epithelial cell adhesion molecule
Formulation:	PBS pH7.3, 0.05% NaN ₃ , 50% glycerol
Concentration:	lot specific
Purification:	Antigen affinity purification
Conjugation:	Unconjugated
Storage:	Store at -20°C as received.
Stability:	Stable for 12 months from date of receipt.
Gene Name:	epithelial cell adhesion molecule
Database Link:	NP_002345 Entrez Gene 17075 Mouse Entrez Gene 171577 Rat Entrez Gene 4072 Human P16422
Background:	This gene encodes a carcinoma-associated antigen and is a member of a family that includes at least two type I membrane proteins. This antigen is expressed on most normal epithelial cells and gastrointestinal carcinomas and functions as a homotypic calcium-independent cell adhesion molecule. The antigen is being used as a target for immunotherapy treatment of human carcinomas. Mutations in this gene result in congenital tufting enteropathy.

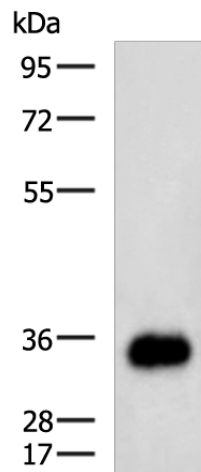


[View online »](#)

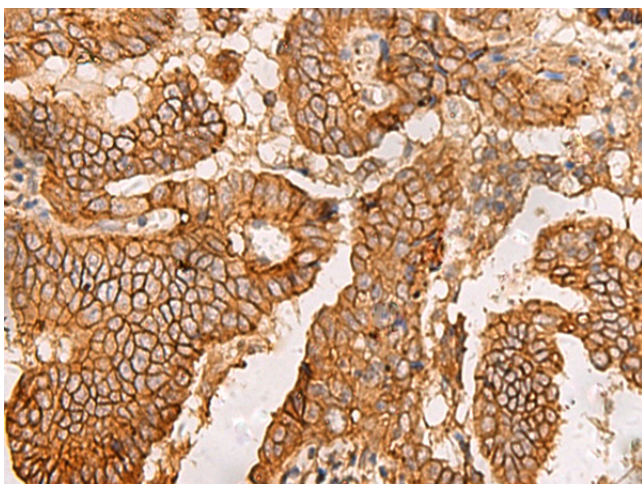
Synonyms: 4; DIAR5; EGP-2; EGP40; EGP314; ESA; HNPCC8; KS1; KSA; M4S1; MIC18; MK-1; TACSTD1; TROP1

Protein Families: ES Cell Differentiation/IPS, Transmembrane

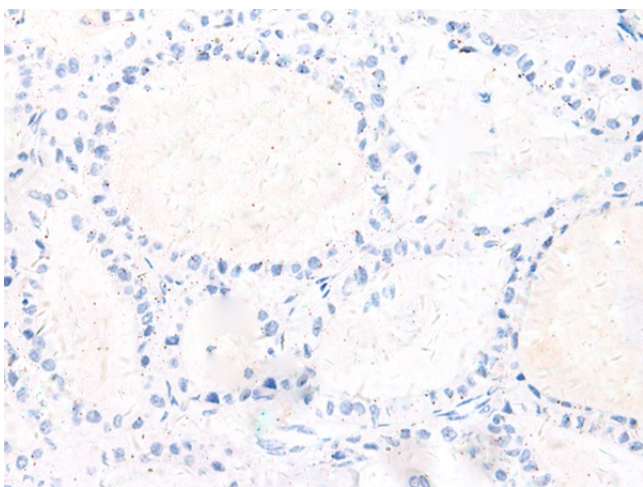
Product images:



Gel: 8%SDS-PAGE
Lysate: 40 μ g
Lane: 231 cell lysate
Primary antibody: TA321475 (EPCAM Antibody) at dilution 1/500
Secondary antibody: Goat anti rabbit IgG at 1/5000 dilution
Exposure time: 30 seconds



Immunohistochemistry of paraffin-embedded Human thyroid cancer tissue using TA321475 (EPCAM Antibody) at dilution 1/20 (Original magnification: \times 200)



Immunohistochemistry of paraffin-embedded Human thyroid cancer tissue using TA321475 (EPCAM Antibody) at dilution 1/20, treated with synthetic peptide. (Original magnification: ×200)