

## Product datasheet for **TA321468**

### LIF Rabbit Polyclonal Antibody

#### Product data:

Product Type:	Primary Antibodies
Applications:	IHC
Recommended Dilution:	IHC: 25-100 Positive control: Human thyroid cancer Predicted cell location: Cytoplasm
Reactivity:	Human, Mouse, Rat
Host:	Rabbit
Isotype:	IgG
Clonality:	Polyclonal
Immunogen:	Synthetic peptide corresponding to a region derived from 34-47 amino acids of Human leukemia inhibitory factor
Formulation:	PBS pH7.3, 0.05% NaN <sub>3</sub> , 50% glycerol
Concentration:	lot specific
Purification:	Antigen affinity purification
Conjugation:	Unconjugated
Storage:	Store at -20°C as received.
Stability:	Stable for 12 months from date of receipt.
Gene Name:	leukemia inhibitory factor
Database Link:	<a href="#">NP_002300</a> <a href="#">Entrez Gene 16878 MouseEntrez Gene 60584 RatEntrez Gene 3976 Human P15018</a>
Background:	The protein encoded by this gene is a pleiotropic cytokine with roles in several different systems. It is involved in the induction of hematopoietic differentiation in normal and myeloid leukemia cells; induction of neuronal cell differentiation; regulator of mesenchymal to epithelial conversion during kidney development; and may also have a role in immune tolerance at the maternal-fetal interface. Alternatively spliced transcript variants encoding multiple isoforms have been observed for this gene.
Synonyms:	CDF; DIA; HILDA; MLPLI

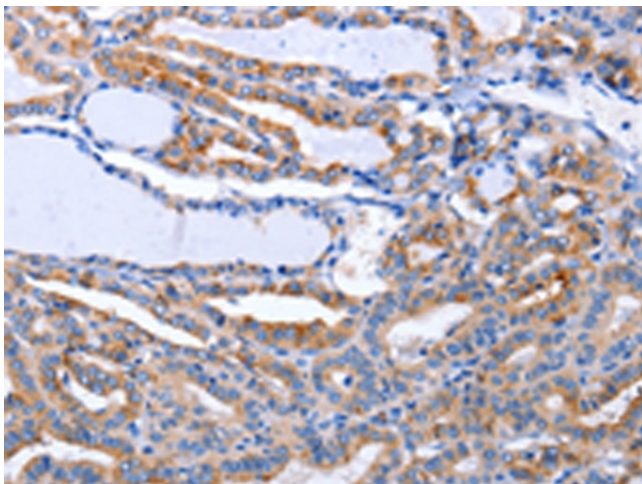


[View online »](#)

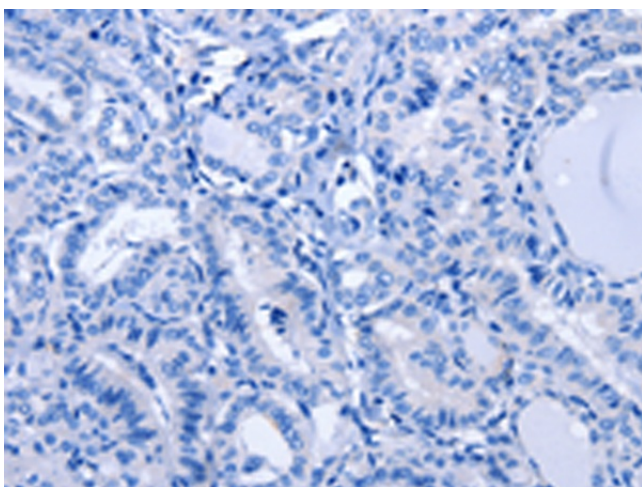
**Protein Families:** Adult stem cells, Druggable Genome, ES Cell Differentiation/IPS, Secreted Protein

**Protein Pathways:** Cytokine-cytokine receptor interaction, Jak-STAT signaling pathway

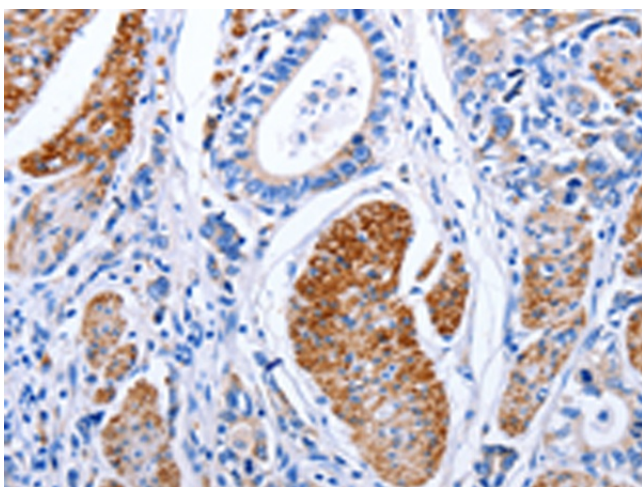
**Product images:**



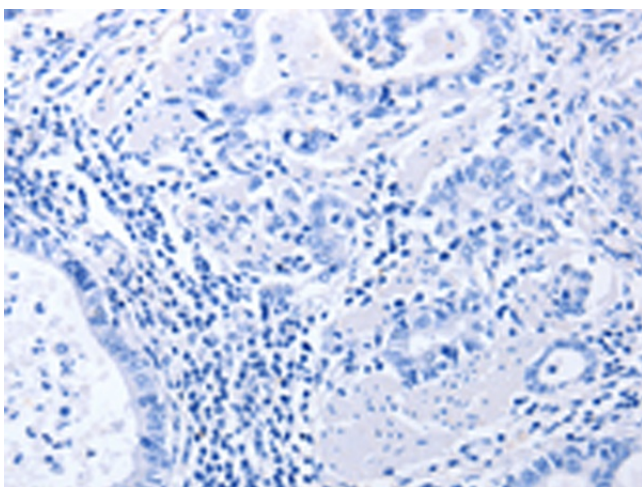
Immunohistochemistry of paraffin-embedded Human thyroid cancer tissue using TA321468 (LIF Antibody) at dilution 1/25 (Original magnification: ×200)



Immunohistochemistry of paraffin-embedded Human thyroid cancer tissue using TA321468 (LIF Antibody) at dilution 1/25, treated with synthetic peptide. (Original magnification: ×200)



Immunohistochemistry of paraffin-embedded Human stomach cancer tissue using TA321468 (LIF Antibody) at dilution 1/25 (Original magnification:  $\times 200$ )



Immunohistochemistry of paraffin-embedded Human stomach cancer tissue using TA321468 (LIF Antibody) at dilution 1/25, treated with synthetic peptide. (Original magnification:  $\times 200$ )