

Product datasheet for **TA321381**

PARP1 Rabbit Polyclonal Antibody

Product data:

Product Type:	Primary Antibodies
Applications:	IHC, WB
Recommended Dilution:	WB: 500-2000 WB positive control: Human fetal brain tissue IHC: 25-100 Positive control: Human cervical cancer Predicted cell location: Cytoplasm, Nucleus
Reactivity:	Human, Mouse, Rat
Host:	Rabbit
Isotype:	IgG
Clonality:	Polyclonal
Immunogen:	Synthetic peptide corresponding to a region derived from 227-240 amino acids of Human poly (ADP-ribose) polymerase 1
Formulation:	PBS pH7.3, 0.05% NaN ₃ , 50% glycerol
Concentration:	lot specific
Purification:	Antigen affinity purification
Conjugation:	Unconjugated
Storage:	Store at -20°C as received.
Stability:	Stable for 12 months from date of receipt.
Predicted Protein Size:	113 kDa
Gene Name:	poly(ADP-ribose) polymerase 1
Database Link:	NP_001609 Entrez Gene 11545 Mouse Entrez Gene 25591 Rat Entrez Gene 142 Human P09874



[View online »](#)

Background:

This gene encodes a chromatin-associated enzyme; poly(ADP-ribosyl)transferase; which modifies various nuclear proteins by poly(ADP-ribosyl)ation. The modification is dependent on DNA and is involved in the regulation of various important cellular processes such as differentiation; proliferation; and tumor transformation and also in the regulation of the molecular events involved in the recovery of cell from DNA damage. In addition; this enzyme may be the site of mutation in Fanconi anemia; and may participate in the pathophysiology of type I diabetes.

Synonyms:

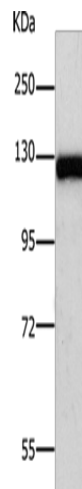
ADPRT; ADPRT 1; ADPRT1; ARTD1; pADPRT-1; PARP; PARP-1; PPOL

Protein Families:

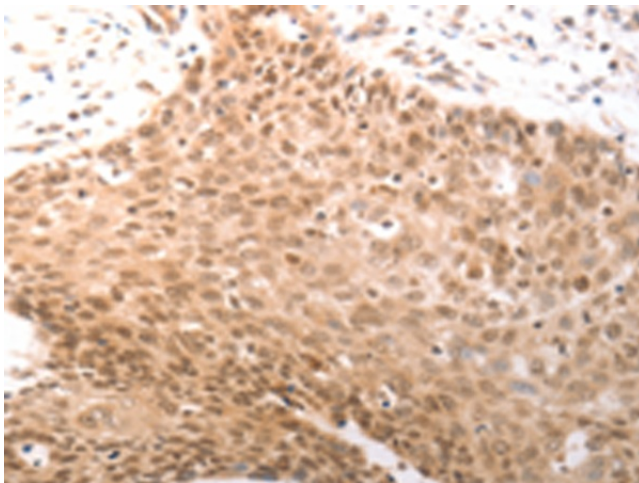
Druggable Genome, Stem cell - Pluripotency, Transcription Factors

Protein Pathways:

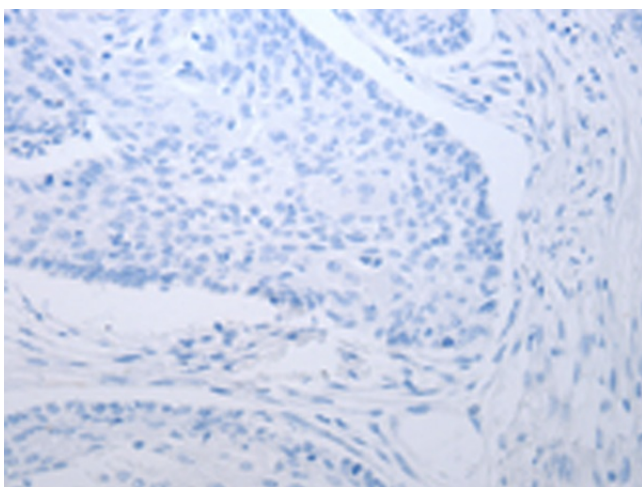
Base excision repair

Product images:


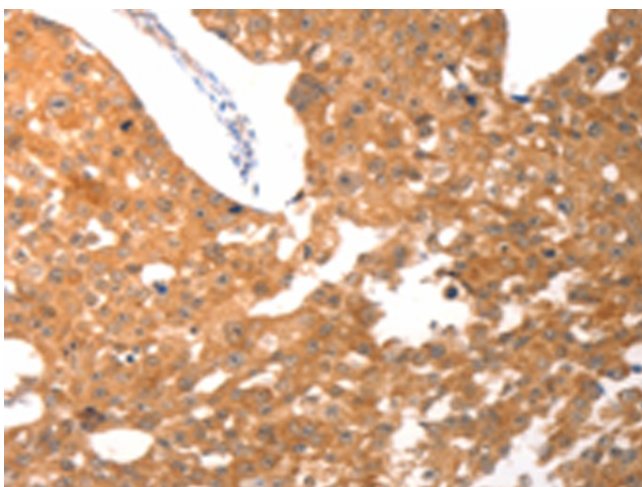
Gel: 10%SDS-PAGE
 Lysate: 40 µg
 Lane: Human fetal brain tissue
 Primary antibody: TA321381 (PARP1(cleaved) Antibody) at dilution 1/500
 Secondary antibody: Goat anti rabbit IgG at 1/8000 dilution
 Exposure time: 30 seconds



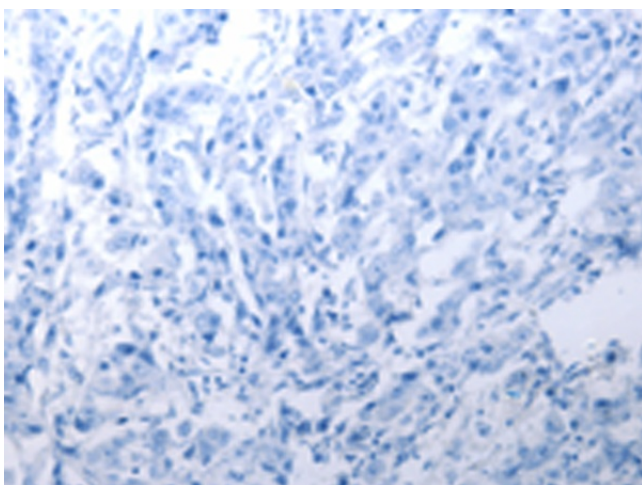
Immunohistochemistry of paraffin-embedded Human cervical cancer tissue using TA321381 (PARP1(cleaved) Antibody) at dilution 1/25 (Original magnification: ×200)



Immunohistochemistry of paraffin-embedded Human cervical cancer tissue using TA321381 (PARP1(cleaved) Antibody) at dilution 1/25, treated with synthetic peptide. (Original magnification: $\times 200$)



Immunohistochemistry of paraffin-embedded Human breast cancer tissue using TA321381 (PARP1(cleaved) Antibody) at dilution 1/25 (Original magnification: $\times 200$)



Immunohistochemistry of paraffin-embedded Human breast cancer tissue using TA321381 (PARP1(cleaved) Antibody) at dilution 1/25, treated with synthetic peptide. (Original magnification: $\times 200$)