

Product datasheet for **TA321363**

Orexin Receptor 1 (HCRTR1) Rabbit Polyclonal Antibody

Product data:

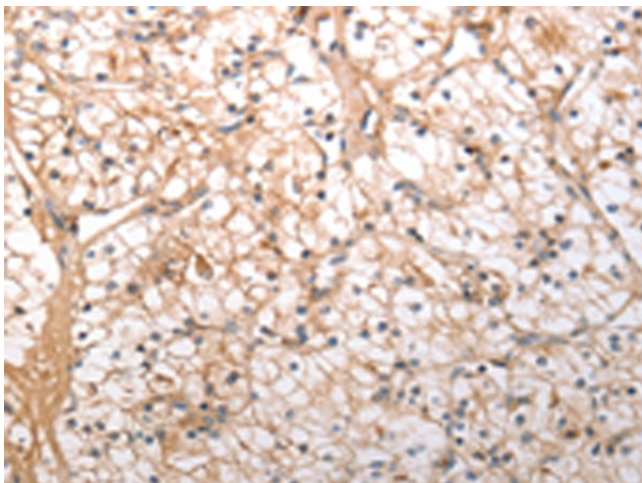
Product Type:	Primary Antibodies
Applications:	IHC
Recommended Dilution:	IHC: 100-300 Positive control: Human renal cancer Predicted cell location: Cytoplasm
Reactivity:	Human, Mouse, Rat
Host:	Rabbit
Isotype:	IgG
Clonality:	Polyclonal
Immunogen:	Synthetic peptide corresponding to a region derived from 393-405 amino acids of Human hypocretin (orexin) receptor 1
Formulation:	PBS pH7.3, 0.05% NaN ₃ , 50% glycerol
Concentration:	lot specific
Purification:	Antigen affinity purification
Conjugation:	Unconjugated
Storage:	Store at -20°C as received.
Stability:	Stable for 12 months from date of receipt.
Gene Name:	hypocretin receptor 1
Database Link:	NP_001516 Entrez Gene 25593 Rat Entrez Gene 230777 Mouse Entrez Gene 3061 Human O43613
Background:	The protein encoded by this gene is a G-protein coupled receptor involved in the regulation of feeding behavior. The encoded protein selectively binds the hypothalamic neuropeptide orexin A. A related gene (HCRTR2) encodes a G-protein coupled receptor that binds orexin A and orexin B.
Synonyms:	OX1R
Protein Families:	Druggable Genome, ES Cell Differentiation/IPS, GPCR, Transmembrane



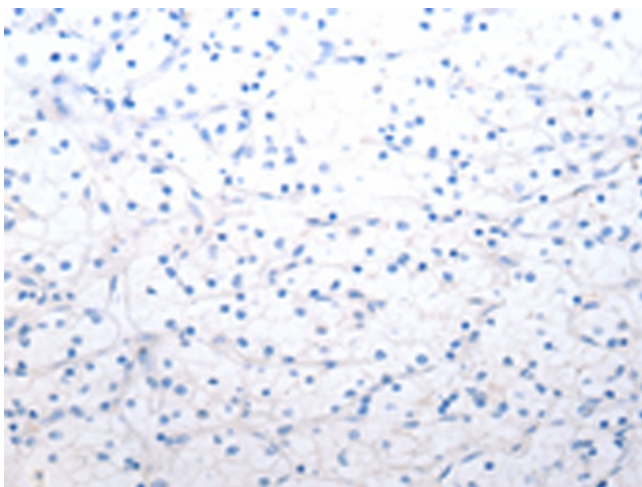
[View online »](#)

Protein Pathways: Neuroactive ligand-receptor interaction

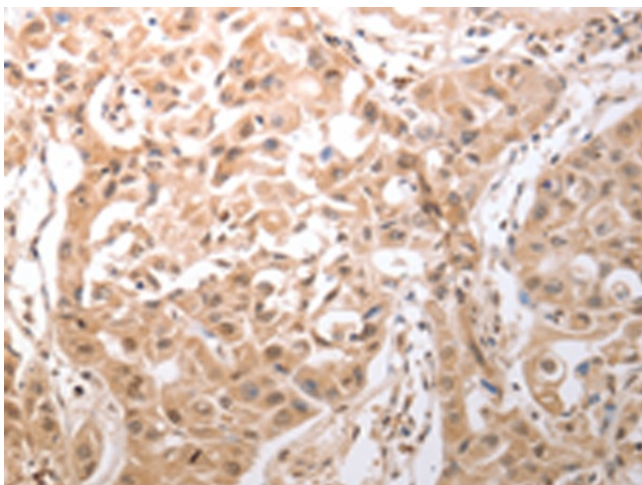
Product images:



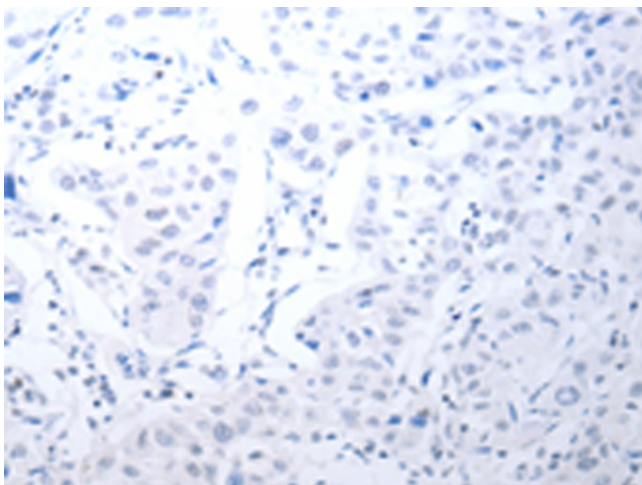
Immunohistochemistry of paraffin-embedded Human renal cancer tissue using TA321363 (HCRTR1 Antibody) at dilution 1/100 (Original magnification: $\times 200$)



Immunohistochemistry of paraffin-embedded Human renal cancer tissue using TA321363 (HCRTR1 Antibody) at dilution 1/100, treated with synthetic peptide. (Original magnification: $\times 200$)



Immunohistochemistry of paraffin-embedded Human lung cancer tissue using TA321363 (HCRTR1 Antibody) at dilution 1/100 (Original magnification: $\times 200$)



Immunohistochemistry of paraffin-embedded Human lung cancer tissue using TA321363 (HCRTR1 Antibody) at dilution 1/100, treated with synthetic peptide. (Original magnification: $\times 200$)