

## Product datasheet for **TA321328**

### p38 (MAPK14) Rabbit Polyclonal Antibody

#### Product data:

Product Type:	Primary Antibodies
Applications:	IHC, WB
Recommended Dilution:	WB: 1:500-1000, IHC: 1:50-100
Reactivity:	Human, Mouse, Rat
Modifications:	Phospho-specific
Host:	Rabbit
Isotype:	IgG
Clonality:	Polyclonal
Immunogen:	Peptide sequence around phosphorylation site of tyrosine 182 (T-G-Y(p)-V-A) derived from Human MAPK14.
Formulation:	PBS pH7.3, 0.05% NaN <sub>3</sub> , 50% glycerol
Concentration:	lot specific
Purification:	Antigen affinity purification
Conjugation:	Unconjugated
Storage:	Store at -20°C as received.
Stability:	Stable for 12 months from date of receipt.
Predicted Protein Size:	43 kDa
Gene Name:	mitogen-activated protein kinase 14
Database Link:	<a href="#">NP_001306</a> <a href="#">Entrez Gene 26416 Mouse</a> <a href="#">Entrez Gene 81649 Rat</a> <a href="#">Entrez Gene 1432 Human</a> <a href="#">Q16539</a>

**Background:** Responds to activation by environmental stress, pro-inflammatory cytokines and lipopolysaccharide (LPS) by phosphorylating a number of transcription factors, such as ELK1 and ATF2 and several downstream kinases, such as MAPKAPK2 and MAPKAPK5. Plays a critical role in the production of some cytokines, for example IL-6. May play a role in stabilization of EPO mRNA during hypoxic stress. Isoform Mxi2 activation is stimulated by mitogens and oxidative stress and only poorly phosphorylates ELK1 and ATF2. Isoform Expip may play a role in the early onset of apoptosis.



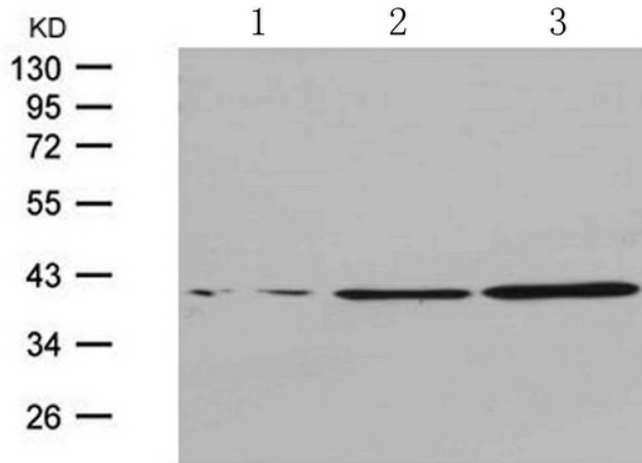
[View online »](#)

**Synonyms:** CSBP; CSBP1; CSBP2; CSPB1; EXIP; Mxi2; p38; p38ALPHA; PRKM14; PRKM15; RK; SAPK2A

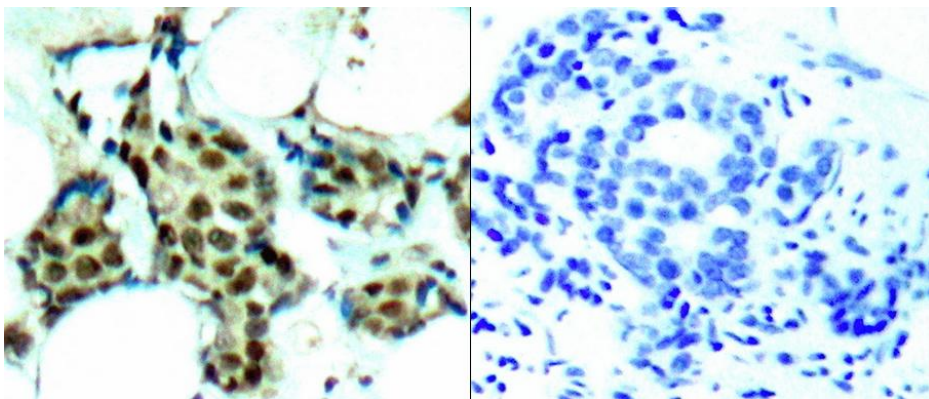
**Protein Families:** Druggable Genome, Protein Kinase

**Protein Pathways:** Amyotrophic lateral sclerosis (ALS), Epithelial cell signaling in Helicobacter pylori infection, Fc epsilon RI signaling pathway, GnRH signaling pathway, Leukocyte transendothelial migration, MAPK signaling pathway, Neurotrophin signaling pathway, NOD-like receptor signaling pathway, Progesterone-mediated oocyte maturation, RIG-I-like receptor signaling pathway, T cell receptor signaling pathway, Toll-like receptor signaling pathway, VEGF signaling pathway

### Product images:



Predicted band size: 43 kDa. Positive control: HeLa cells untreated or treated with UV for the indicated times lysate. Recommended dilution: 1/500-1000. (Gel: 10%SDS-PAGE Lane 1-3: HeLa cells treated with UV for 0; 15; 30 minutes lysate Lysates: 30 ug per lane Primary antibody: 1/500 dilution Secondary antibody: Goat anti Rabbit IgG - H&L (HRP) at 1/10000 dilution Exposure time: 1 minute)



Predicted cell location: Cytoplasm; Nucleus. Positive control: Human breast carcinoma tissue. Recommended dilution: 1/50-100 The image on the left is immunohistochemistry of paraffin-embedded human breast carcinoma tissue using MAPK14 (Phospho-Tyr182) antibody at dilution 1/50, on the right is treated with the synthetic peptide. (Original magnification:x200)