

Product datasheet for **TA321241**

Prostaglandin D Synthase (PTGDS) Rabbit Polyclonal Antibody

Product data:

Product Type:	Primary Antibodies
Applications:	IHC, WB
Recommended Dilution:	WB: 500-2000 WB positive control: Hela cell, Human muscle tissue lysates IHC: 50-100 Positive control: Human liver cancer Predicted cell location: Cytoplasm
Reactivity:	Human, Mouse
Host:	Rabbit
Isotype:	IgG
Clonality:	Polyclonal
Immunogen:	Fusion protein corresponding to a region derived from 64-325 amino acids of human prostaglandin D2 synthase 21kDa (brain)prostaglandin D2 synthase 21kDa (brain)
Formulation:	PBS pH7.3, 0.05% NaN ₃ , 50% glycerol
Concentration:	lot specific
Purification:	Antigen affinity purification
Conjugation:	Unconjugated
Storage:	Store at -20°C as received.
Stability:	Stable for 12 months from date of receipt.
Predicted Protein Size:	21 kDa
Gene Name:	prostaglandin D2 synthase
Database Link:	NP_000945 Entrez Gene 19215 Mouse Entrez Gene 5730 Human P41222



[View online »](#)

Background:

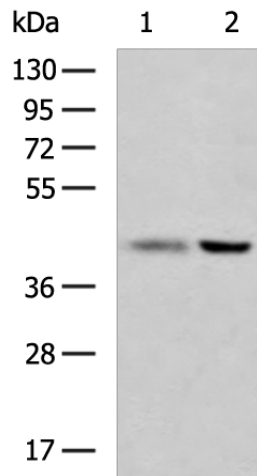
The protein encoded by this gene is a glutathione-independent prostaglandin D synthase that catalyzes the conversion of prostaglandin H₂ (PGH₂) to postaglandin D₂ (PGD₂). PGD₂ functions as a neuromodulator as well as a trophic factor in the central nervous system. PGD₂ is also involved in smooth muscle contraction/relaxation and is a potent inhibitor of platelet aggregation. This gene is preferentially expressed in brain. Studies with transgenic mice overexpressing this gene suggest that this gene may be also involved in the regulation of non-rapid eye movement sleep.

Synonyms:

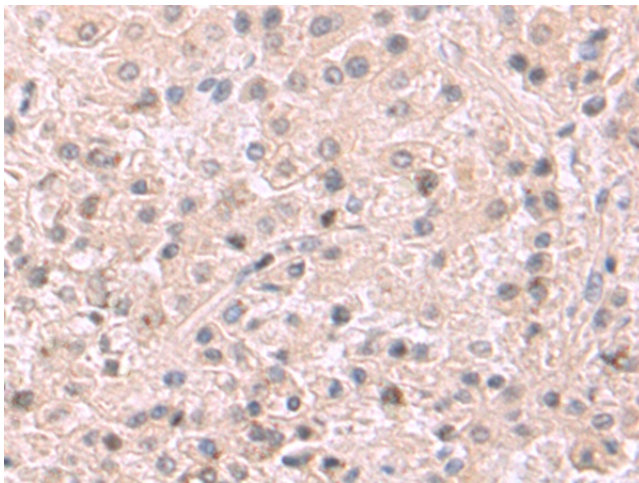
L-PGDS; LPGDS; PDS; PGD2; PGDS; PGDS2

Protein Pathways:

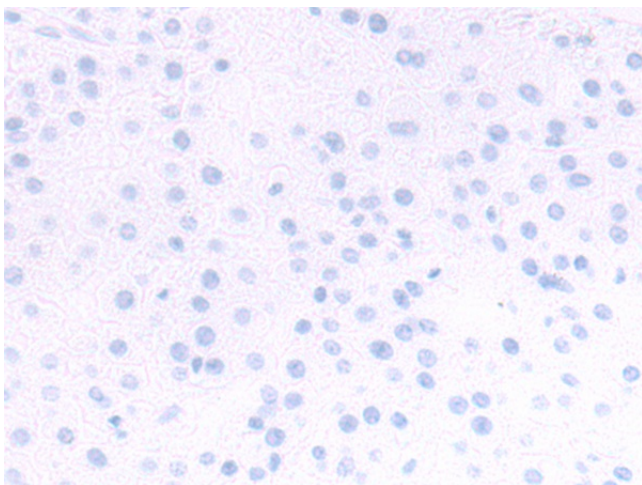
Arachidonic acid metabolism, Metabolic pathways

Product images:


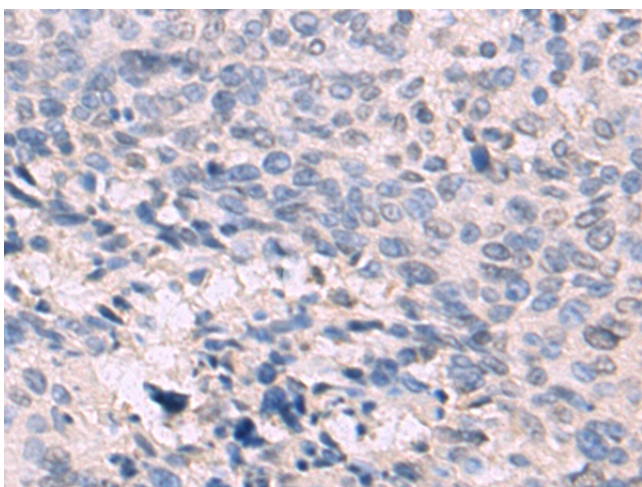
Gel: 8%SDS-PAGE
 Lysate: 40 µg
 Lane 1-2: Hela cell
 Human muscle tissue lysates
 Primary antibody: TA321241 (MAP2K3 Antibody)
 at dilution 1/400
 Secondary antibody: Goat anti rabbit IgG at
 1/5000 dilution
 Exposure time: 1 minute



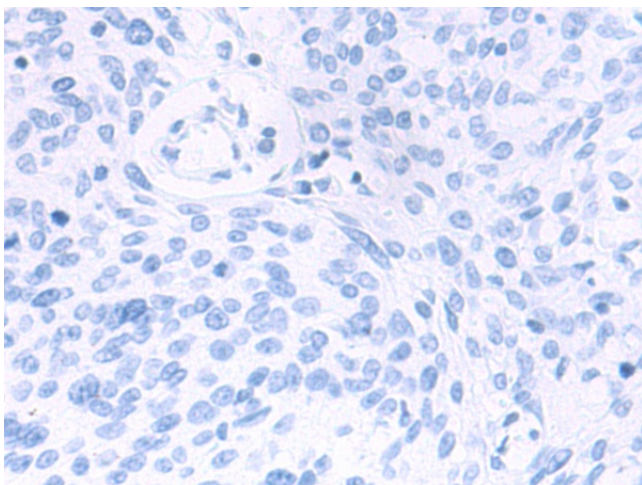
Immunohistochemistry of paraffin-embedded
 Human liver cancer tissue using TA321241
 (MAP2K3 Antibody) at dilution 1/60 (Original
 magnification: ×200)



Immunohistochemistry of paraffin-embedded Human liver cancer tissue using TA321241 (MAP2K3 Antibody) at dilution 1/60, treated with fusion protein. (Original magnification: $\times 200$)



Immunohistochemistry of paraffin-embedded Human cervical cancer tissue using TA321241 (MAP2K3 Antibody) at dilution 1/60 (Original magnification: $\times 200$)



Immunohistochemistry of paraffin-embedded Human cervical cancer tissue using TA321241 (MAP2K3 Antibody) at dilution 1/60, treated with fusion protein. (Original magnification: $\times 200$)