

Product datasheet for **TA321210**

Metabotropic Glutamate Receptor 8 (GRM8) Rabbit Polyclonal Antibody

Product data:

Product Type:	Primary Antibodies
Applications:	IHC, WB
Recommended Dilution:	ELISA: 1:2000-10000, WB: 1:1000-5000, IHC: 1:150-500
Reactivity:	Human, Mouse, Rat
Host:	Rabbit
Isotype:	IgG
Clonality:	Polyclonal
Immunogen:	Synthetic peptide corresponding to a region derived from 64-77 amino acids of Human glutamate receptor, metabotropic 8
Formulation:	PBS pH7.3, 0.05% NaN ₃ , 50% glycerol
Concentration:	lot specific
Purification:	Antigen affinity purification
Conjugation:	Unconjugated
Storage:	Store at -20°C as received.
Stability:	Stable for 12 months from date of receipt.
Predicted Protein Size:	56 kDa
Gene Name:	glutamate metabotropic receptor 8
Database Link:	NP_000836 Entrez Gene 14823 Mouse Entrez Gene 60590 Rat Entrez Gene 2918 Human O00222



[View online »](#)

Background:

L-glutamate is the major excitatory neurotransmitter in the central nervous system and activates both ionotropic and metabotropic glutamate receptors. Glutamatergic neurotransmission is involved in most aspects of normal brain function and can be perturbed in many neuropathologic conditions. The metabotropic glutamate receptors are a family of G protein-coupled receptors; that have been divided into 3 groups on the basis of sequence homology; putative signal transduction mechanisms; and pharmacologic properties. Group I includes GRM1 and GRM5 and these receptors have been shown to activate phospholipase C. Group II includes GRM2 and GRM3 while Group III includes GRM4; GRM6; GRM7 and GRM8. Group II and III receptors are linked to the inhibition of the cyclic AMP cascade but differ in their agonist selectivities. Alternatively spliced transcript variants encoding different isoforms have been described for this gene.?

Synonyms:

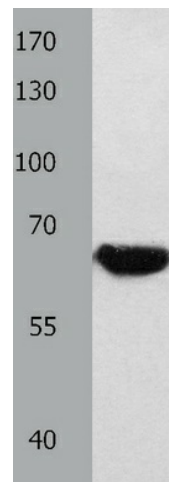
GLUR8; GPRC1H; mGlu8; MGLUR8

Protein Families:

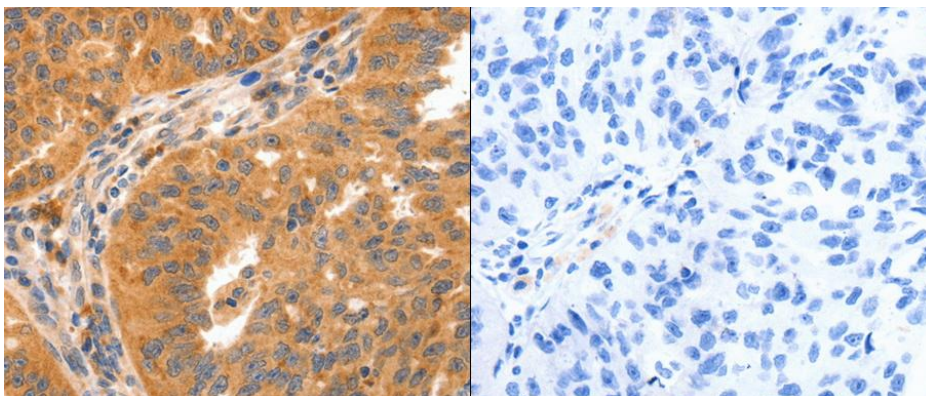
Druggable Genome, GPCR, Transmembrane

Protein Pathways:

Neuroactive ligand-receptor interaction

Product images:

Predicted band size: 56 kDa. Positive control: Mouse heart tissue lysate. Recommended dilution: 1/1000-5000. (Gel: 8%SDS-PAGE Lysate: 40 ug Primary antibody: 1/1500 dilution Secondary antibody: Goat anti Rabbit IgG - H&L (HRP) at 1/10000 dilution Exposure time: 5 minutes)



Predicted cell location: Cytoplasm. Positive control: Human ovarian cancer tissue. Recommended dilution: 1/150-500 The image on the left is immunohistochemistry of paraffin-embedded Human ovarian cancer tissue using GRM8 antibody at dilution 1/150, on the right is treated with the synthetic peptide. (Original magnification:x200)