

Product datasheet for **TA321206**

GABA A Receptor beta 1 (GABRB1) Rabbit Polyclonal Antibody

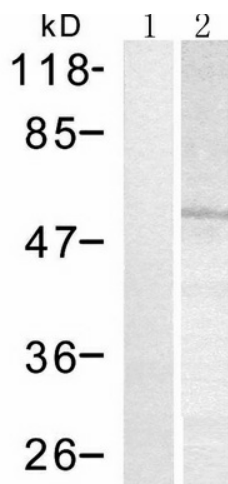
Product data:

Product Type:	Primary Antibodies
Applications:	WB
Recommended Dilution:	WB: 1:500-1000
Reactivity:	Human, Mouse, Rat
Host:	Rabbit
Isotype:	IgG
Clonality:	Polyclonal
Immunogen:	Peptide sequence around aa.432~436 (R-A-S-Q-L) derived from Human GABRB1.
Formulation:	PBS pH7.3, 0.05% NaN ₃ , 50% glycerol
Concentration:	lot specific
Purification:	Antigen affinity purification
Conjugation:	Unconjugated
Storage:	Store at -20°C as received.
Stability:	Stable for 12 months from date of receipt.
Predicted Protein Size:	54 kDa
Gene Name:	gamma-aminobutyric acid type A receptor beta1 subunit
Database Link:	NP_000803 Entrez Gene 14400 Mouse Entrez Gene 25450 Rat Entrez Gene 2560 Human P18505
Background:	The gamma-aminobutyric acid (GABA) A receptor is a multisubunit chloride channel that mediates the fastest inhibitory synaptic transmission in the central nervous system. This gene encodes GABA A receptor, beta 1 subunit. It is mapped to chromosome 4p12 in a cluster comprised of genes encoding alpha 4, alpha 2 and gamma 1 subunits of the GABA A receptor. Alteration of this gene is implicated in the pathogenetics of schizophrenia.
Synonyms:	beta 1; gamma-aminobutyric acid (GABA) A receptor
Protein Families:	Druggable Genome, Ion Channels: Cys-loop Receptors, Transmembrane
Protein Pathways:	Neuroactive ligand-receptor interaction



[View online »](#)

Product images:



Predicted band size: 54 kDa. Positive control: PC12 cells lysate. Recommended dilution: 1/ 500-1000. (Gel: 10%SDS-PAGE Lane 1: Treated with the peptide Lane 2: PC12 cells lysate Lysates: 30 ug per lane Primary antibody: 1/500 dilution Secondary antibody: Goat anti Rabbit IgG - H&L (HRP) at 1/10000 dilution Exposure time: 1 minute)