

Product datasheet for **TA321167**

BDKRB2 Rabbit Polyclonal Antibody

Product data:

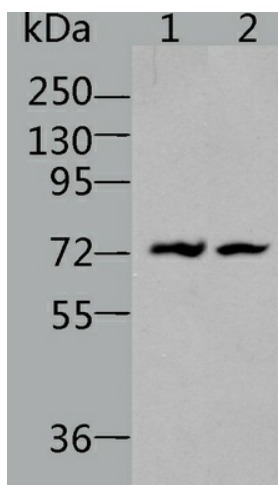
Product Type:	Primary Antibodies
Applications:	IHC, WB
Recommended Dilution:	ELISA: 1:2000-5000, WB: 1:200-1000, IHC: 1:50-200
Reactivity:	Human, Mouse, Rat
Host:	Rabbit
Isotype:	IgG
Clonality:	Polyclonal
Immunogen:	Synthetic peptide corresponding to a region derived from 377-391 amino acids of human bradykinin receptor B2
Formulation:	PBS pH7.3, 0.05% NaN ₃ , 50% glycerol
Concentration:	lot specific
Purification:	Antigen affinity purification
Conjugation:	Unconjugated
Storage:	Store at -20°C as received.
Stability:	Stable for 12 months from date of receipt.
Predicted Protein Size:	44 kDa
Gene Name:	bradykinin receptor B2
Database Link:	NP_000614 Entrez Gene 12062 MouseEntrez Gene 25245 RatEntrez Gene 624 Human P30411
Background:	This gene encodes a receptor for bradykinin. The 9 aa bradykinin peptide elicits many responses including vasodilation, edema, smooth muscle spasm and pain fiber stimulation. This receptor associates with G proteins that stimulate a phosphatidylinositol-calcium second messenger system. Alternate start codons result in two isoforms of the protein.
Synonyms:	B2R; BK-2; BK2; BKR2; BRB2
Protein Families:	Druggable Genome, GPCR, Transmembrane



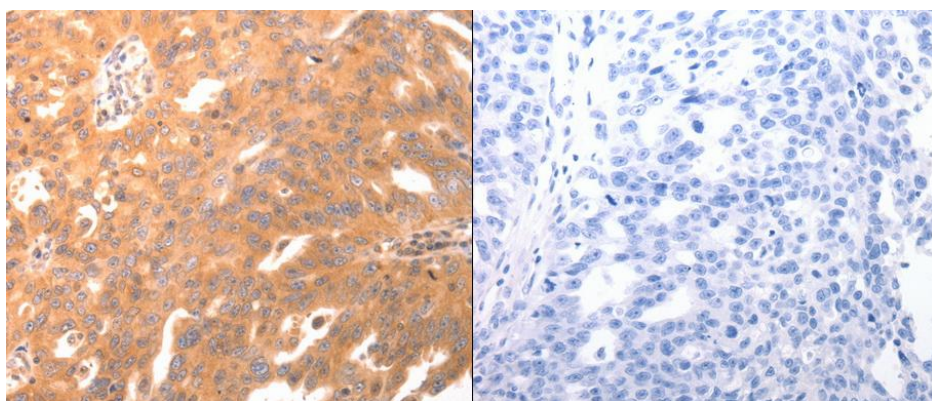
[View online »](#)

Protein Pathways: Calcium signaling pathway, Complement and coagulation cascades, Neuroactive ligand-receptor interaction, Regulation of actin cytoskeleton

Product images:



Predicted band size: 44kDa. Positive control: Human leiomyosarcoma tissue and NIH/3T3 cell lysate. Recommended dilution: 1/200-1000. (Gel: 10%SDS-PAGE Lane 1: Human leiomyosarcoma tissue lysate Lane 2: NIH/3T3 cell lysate Lysates: 50 ug per lane Primary antibody: 1/500 dilution Secondary antibody: Goat anti Rabbit IgG - H&L (HRP) at 1/8000 dilution Exposure time: 1 minute)



Predicted cell location: Cytoplasm. Positive control: Human ovarian cancer tissue. Recommended dilution: 1/50-200 The image on the left is immunohistochemistry of paraffin-embedded human ovarian cancer tissue using BDKRB2 antibody at dilution 1/30, on the right is treated with the synthetic peptide. (Original magnification:x200)