

Product datasheet for **TA321149**

Myelin Protein Zero (MPZ) Rabbit Polyclonal Antibody

Product data:

Product Type:	Primary Antibodies
Applications:	IHC
Recommended Dilution:	IHC: 15-50 Positive control: Human thyroid cancer Predicted cell location: Cell membrane, Cytoplasm
Reactivity:	Human, Mouse, Rat
Host:	Rabbit
Isotype:	IgG
Clonality:	Polyclonal
Immunogen:	Full length fusion protein
Formulation:	PBS pH7.3, 0.05% NaN ₃ , 50% glycerol
Concentration:	lot specific
Purification:	Antigen affinity purification
Conjugation:	Unconjugated
Storage:	Store at -20°C as received.
Stability:	Stable for 12 months from date of receipt.
Gene Name:	myelin protein zero
Database Link:	NP_000521 Entrez Gene 17528 Mouse Entrez Gene 24564 Rat Entrez Gene 4359 Human P25189

Background: This gene encodes a major structural protein of peripheral myelin. Mutations in this gene result in the autosomal dominant form of Charcot-Marie-Tooth disease type 1 and other polyneuropathies. The myelin sheath is a multi-layered membrane; unique to the nervous system; that functions as an insulator to greatly increase the velocity of axonal impulse conduction. The P0 glycoprotein; absent in the central nervous system; [1] is a major component of the myelin sheath in peripheral nerves. It comprises a large extracellular N-terminal domain; a single transmembrane (TM) region; and a smaller positively charged intracellular domain.



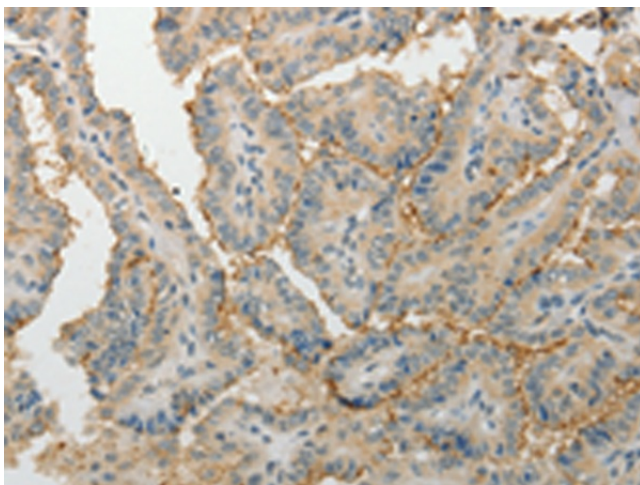
[View online »](#)

Synonyms: CHM; CMT1; CMT1B; CMT2I; CMT2J; CMT4E; CMTD13; CMTD1D; DSS; HMSNIB; MPP; P0

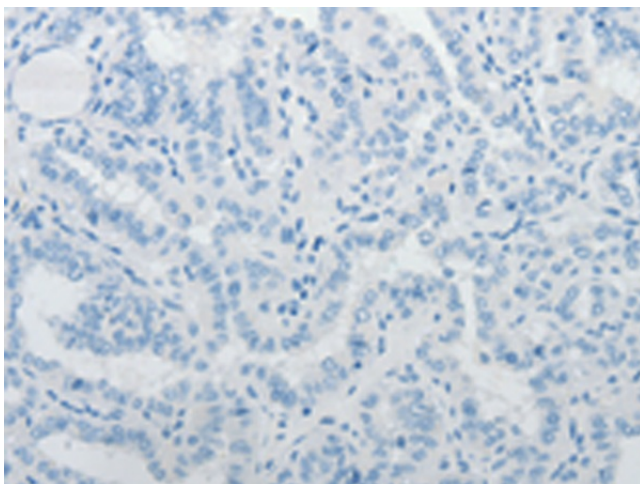
Protein Families: Druggable Genome, Transmembrane

Protein Pathways: Cell adhesion molecules (CAMs)

Product images:



Immunohistochemistry of paraffin-embedded Human thyroid cancer tissue using TA321149 (MPZ Antibody) at dilution 1/5 (Original magnification: x200)



Immunohistochemistry of paraffin-embedded Human thyroid cancer tissue using TA321149 (MPZ Antibody) at dilution 1/5, treated with fusion protein. (Original magnification: x200)