

## Product datasheet for **TA320163**

### ATG9B Rabbit Polyclonal Antibody

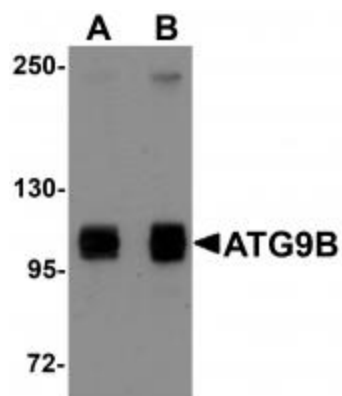
#### Product data:

Product Type:	Primary Antibodies
Applications:	IF, WB
Recommended Dilution:	WB: 1 - 2 ug/mL, ICC: 10 ug/mL, IF: 20 ug/mL
Reactivity:	Human, Mouse, Rat
Host:	Rabbit
Isotype:	IgG
Clonality:	Polyclonal
Immunogen:	ATG9B antibody was raised against a 17 amino acid synthetic peptide near the carboxy terminus of human ATG9B.
Formulation:	ATG9B Antibody is supplied in PBS containing 0.02% sodium azide.
Concentration:	1ug/ul
Purification:	ATG9B Antibody is affinity chromatography purified via peptide column.
Conjugation:	Unconjugated
Storage:	Store at -20°C as received.
Stability:	Stable for 12 months from date of receipt.
Gene Name:	autophagy related 9B
Database Link:	<a href="#">NP_775952</a> <a href="#">Entrez Gene 213948 Mouse</a> <a href="#">Entrez Gene 499973 Rat</a> <a href="#">Entrez Gene 285973 Human Q674R7</a>
Background:	ATG9B Antibody: Autophagy, the process of bulk degradation of cellular proteins through an autophagosomic-lysosomal pathway is important for normal growth control and may be defective in tumor cells. It is involved in the preservation of cellular nutrients under starvation conditions as well as the normal turnover of cytosolic components. This process is negatively regulated by TOR (Target of rapamycin) through phosphorylation of autophagy protein APG1. ATG9B plays a role in autophagy and it's highly expressed in placenta and pituitary gland.
Synonyms:	APG9L2; NOS3AS; SONE
Protein Families:	Transmembrane

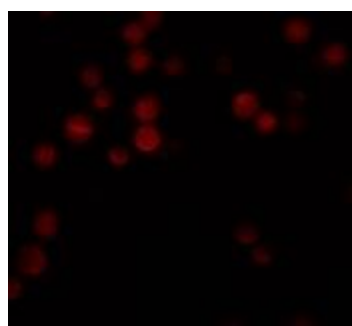


[View online »](#)

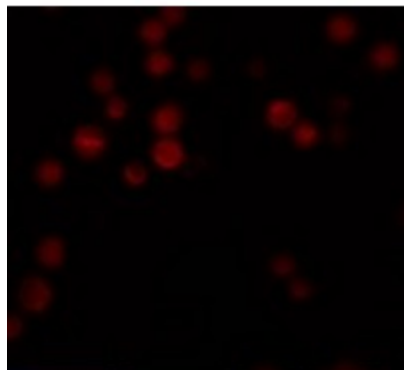
## Product images:



Western blot analysis of ATG9B in HeLa cell lysate with ATG9B antibody at (A) 1 and (B) 2 ug/mL.



Immunocytochemistry of ATG9B in HeLa cells with ATG9B antibody at 10 ug/mL.



Immunofluorescence of ATG9B in HeLa cells with ATG9B antibody at 20 ug/mL.