

Product datasheet for **TA319817**

TMEM147 Rabbit Polyclonal Antibody

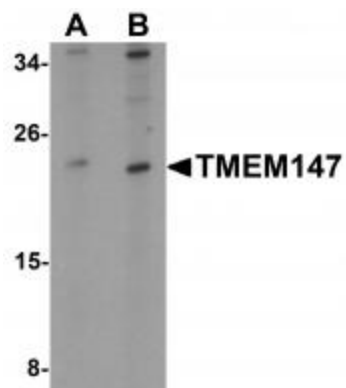
Product data:

| | |
|-----------------------|--|
| Product Type: | Primary Antibodies |
| Applications: | WB |
| Recommended Dilution: | WB: 1 - 2 ug/mL |
| Reactivity: | Human, Mouse, Rat |
| Host: | Rabbit |
| Isotype: | IgG |
| Clonality: | Polyclonal |
| Immunogen: | TMEM147 antibody was raised against a 13 amino acid synthetic peptide near the center of human TMEM147. |
| Formulation: | TMEM147 Antibody is supplied in PBS containing 0.02% sodium azide. |
| Concentration: | 1ug/ul |
| Purification: | TMEM147 Antibody is affinity chromatography purified via peptide column. |
| Conjugation: | Unconjugated |
| Storage: | Store at -20°C as received. |
| Stability: | Stable for 12 months from date of receipt. |
| Gene Name: | transmembrane protein 147 |
| Database Link: | NP_116024 Entrez Gene 10430 Human Q9BVK8 |
| Background: | TMEM147 Antibody: TMEM147 is a recently identified protein that associates with Nicalin and NOMO, forming a complex that is thought to be similar to the gamma-secretase complex. TMEM147 localizes to the endoplasmic reticulum (ER), and in zebrafish, is expressed during early development. TMEM147 also interacts with the M3 muscarinic receptor (M3R) in the ER and is thought to negatively its expression and function. |
| Synonyms: | NIFIE14 |



[View online »](#)

Product images:



Western blot analysis of TMEM147 in Daudi cell lysate with TMEM147 antibody at (A) 1 and (B) 2 ug/mL.