

Product datasheet for **TA319692**

Pdcd1 Mouse Monoclonal Antibody [Clone ID: 7A11B1]

Product data:

Product Type:	Primary Antibodies
Clone Name:	7A11B1
Applications:	IF, IHC, WB
Recommended Dilution:	WB: 1 ug/mL, ICC: 2.5 ug/mL, IF: 20 ug/mL
Reactivity:	Human, Mouse, Rat
Host:	Mouse
Isotype:	IgG1
Clonality:	Monoclonal
Immunogen:	A ~150 amino acid recombinant protein from near the terminus terminus of mouse PD-1.
Formulation:	PD-1 Monoclonal Antibody is supplied in PBS containing 0.02% sodium azide.
Concentration:	1ug/ul
Purification:	PD-1 Monoclonal Antibody is immunoaffinity chromatography purified IgG.
Conjugation:	Unconjugated
Storage:	Store at -20°C as received.
Stability:	Stable for 12 months from date of receipt.
Gene Name:	programmed cell death 1
Database Link:	NP_005009 Entrez Gene 18566 Mouse Q02242



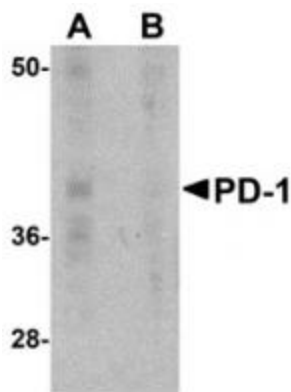
[View online »](#)

Background:

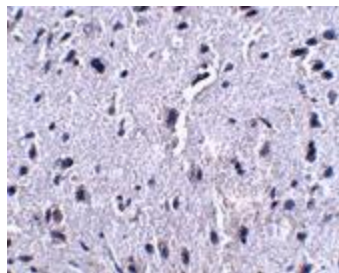
PD-1 Monoclonal Antibody: Cell-mediated immune responses are initiated by T lymphocytes that are themselves stimulated by cognate peptides bound to MHC molecules on antigen-presenting cells (APC). T-cell activation is generally self-limited as activated T cells express receptors such as PD-1 (also known as PDCD-1) that mediate inhibitory signals from the APC. PD-1 can bind two different but related ligands, PDL-1 and PDL-2. Upon binding to either of these ligands, signals generated by PD-1 inhibit the activation of the immune response in the absence of "danger signals" such as LPS or other molecules associated with bacteria or other pathogens. Evidence for this is seen in PD1-null mice who exhibit hyperactivated immune systems and autoimmune diseases. Despite its predicted molecular weight, PD-1 often migrates at higher molecular weight in SDS-PAGE.

Synonyms:

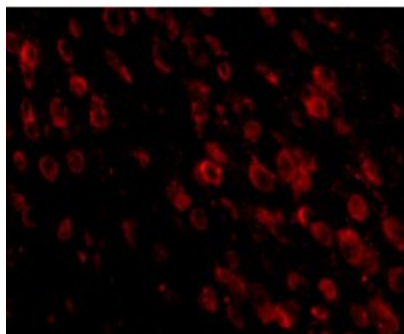
CD279; hPD-1; hPD-I; hSLE1; PD-1; PD1; SLEB2

Product images:

Western blot analysis of PD-1 in A-20 cell lysate with PD-1 antibody at 1 ug/mL in the (A) absence and (B) presence of blocking recombinant protein.



Immunohistochemistry of PD-1 in mouse brain tissue with PD-1 antibody at 2.5 ug/mL.



Immunofluorescence of PD-1 in mouse brain tissue with PD-1 antibody at 20 ug/mL.