

Product datasheet for **TA319664**

IDH2 Rabbit Polyclonal Antibody

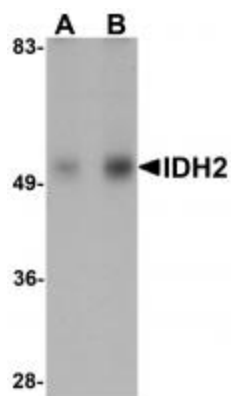
Product data:

Product Type:	Primary Antibodies
Applications:	IF, IHC, WB
Recommended Dilution:	WB: 1 - 2 ug/mL, ICC: 5 ug/mL, IF: 20 ug/mL
Reactivity:	Human, Mouse, Rat
Host:	Rabbit
Isotype:	IgG
Clonality:	Polyclonal
Immunogen:	IDH2 antibody was raised against a 17 amino acid synthetic peptide near the amino terminus of human IDH2.
Formulation:	IDH2 Antibody is supplied in PBS containing 0.02% sodium azide.
Concentration:	1 mg/ml
Purification:	IDH2 Antibody is affinity chromatography purified via peptide column.
Conjugation:	Unconjugated
Storage:	Store at -20°C as received.
Stability:	Stable for 12 months from date of receipt.
Gene Name:	isocitrate dehydrogenase (NADP(+)) 2, mitochondrial
Database Link:	NP_002159 Entrez Gene 269951 Mouse Entrez Gene 361596 Rat Entrez Gene 3418 Human P48735
Background:	IDH2 Antibody: Isocitrate dehydrogenases catalyze the oxidative decarboxylation of isocitrate to 2-oxoglutarate. These enzymes belong to two distinct subclasses, one of which utilizes NAD(+) as the electron acceptor and the other NADP(+). Two NADP(+)-dependent isocitrate dehydrogenases have been found as homodimer: IDH1 is predominantly cytosolic and peroxisomal and IDH2 is mitochondrial. Both IDH1 and IDH2 play significant roles in the tricarboxylic acid cycle (TCA), and defects in IDH1 as well as IDH2 have been implicated in the development of glioma as well as other malignancies.
Synonyms:	D2HGA2; ICD-M; IDH; IDHM; IDP; IDPM; mNADP-IDH
Protein Pathways:	Citrate cycle (TCA cycle), Glutathione metabolism, Metabolic pathways

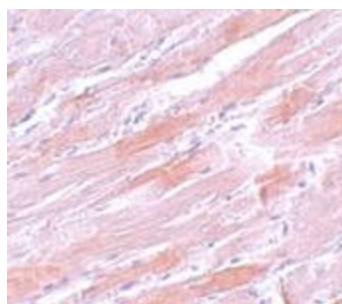


[View online »](#)

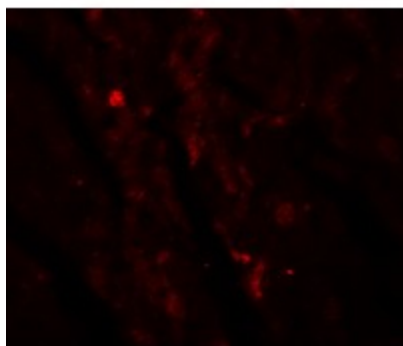
Product images:



Western blot analysis of IDH2 in human heart tissue lysate with IDH2 antibody at (A) 1 and (B) 2 ug/mL.



Immunohistochemistry of IDH2 in mouse heart tissue with IDH2 antibody at 5 ug/mL.



Immunofluorescence of IDH2 in mouse heart tissue with IDH2 antibody at 20 ug/mL.