

Product datasheet for **TA319372**

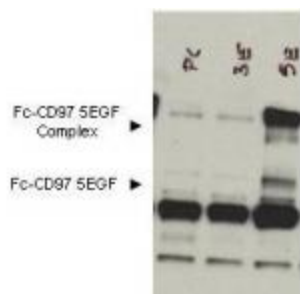
Adgre5 Rabbit Polyclonal Antibody

Product data:

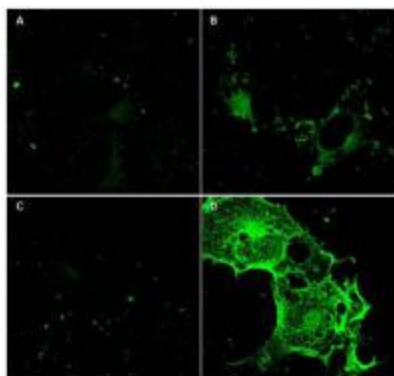
Product Type:	Primary Antibodies
Applications:	IF, WB
Recommended Dilution:	ELISA: 1:10,000 - 1:50,000, WB: 1:1,000 - 1:5,000, IF: 1:1,000 - 1:5,000
Reactivity:	Human, Chimpanzee
Host:	Rabbit
Isotype:	IgG
Clonality:	Polyclonal
Immunogen:	This affinity purified antibody was prepared from whole rabbit serum produced by repeated immunizations with a recombinant protein corresponding to amino acids 1-512 (extracellular domain) of mouse CD97 protein.
Formulation:	0.02 M Potassium Phosphate, 0.15 M Sodium Chloride, pH 7.2
Concentration:	lot specific
Conjugation:	Unconjugated
Storage:	Store at -20°C as received.
Stability:	Stable for 12 months from date of receipt.
Gene Name:	adhesion G protein-coupled receptor E5
Database Link:	NP_001156501 Entrez Gene 976 Human Q9Z0M6
Note:	This antibody is suitable for Cancer, Immunology and Nuclear Signaling research. CD97 is a membrane antigen that is either constitutively expressed or induced by activation on cells of the immune system including



[View online »](#)

Product images:


WB using anti-CD97 antibody shows detection of bands corresponding to free Fc-CD97- (5EGF) (lower arrowhead) and Fc-CD97- (5EGF) present as a complex (upper arrowhead) in lysates from COS cells. The left lane contains lysate from cells transfected with control DNA. The right lane contains lysate from COS cells expressing Fc-CD97- (5EGF). The formation of the CD97 complex is currently under investigation. A 1:1,000 dilution of the primary antibody was used.



Immunofluorescence Microscopy using Protein A purified anti-CD97 antibody shows staining of Fc-CD97- (5EGF) (panel D) in transfected COS cells. Panel A and C shows similar staining using pre-immune serum. Panel A and B show staining of mock transfected COS cells (no vector). A 1:2, 500 dilution of the primary antibody was used. Personal Communication. Yvona Ward. NIH, NCI, CCR, Bethesda, MD.