

Product datasheet for **TA319259**

UBA1 Rabbit Polyclonal Antibody

Product data:

Product Type:	Primary Antibodies
Applications:	IHC, WB
Recommended Dilution:	ELISA: 1:2,000 - 1:10,000, WB: 1:1,000 - 1:5,000, IHC: 2 mg/ml - 20 ug/ml
Reactivity:	Human
Host:	Rabbit
Isotype:	IgG
Clonality:	Polyclonal
Immunogen:	Anti-Ubiquitin Activating Enzyme E1 antibody was prepared from whole rabbit serum produced by repeated immunizations with a recombinant protein corresponding to full length Human Ubiquitin Activating Enzyme E1.
Formulation:	0.02 M Potassium Phosphate, 0.15 M Sodium Chloride, pH 7.2
Concentration:	lot specific
Conjugation:	Unconjugated
Storage:	Store at -20°C as received.
Stability:	Stable for 12 months from date of receipt.
Gene Name:	ubiquitin like modifier activating enzyme 1
Database Link:	NP_003325 Entrez Gene 7317 Human P22314
Synonyms:	A1S9; A1S9T; A1ST; AMCX1; CFAP124; GXP1; POC20; SMAX2; UBA1A; UBE1; UBE1X

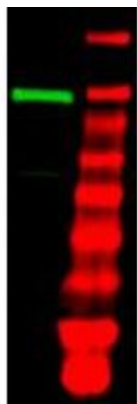


[View online »](#)

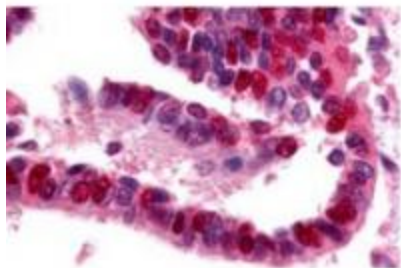
Note: Ubiquitin Activating Enzyme (E1), also known as A1S9 and UBE1, is responsible for the first step in ubiquitin-protein isopeptide bond formation. E1 catalyzes the activation of the C-terminal carboxyl group of ubiquitin by forming a high-energy thioester bond in an ATP-dependent manner. UBE1 is monomeric and contains two active sites within the E1 molecule, allowing it to bind two ubiquitin moieties at a time, with a new ubiquitin forming an adenylate intermediate as the previous one is transferred to the thiol site. Alternative splicing results in 2 transcript variants encoding the same protein, but with different 5' UTR. Isoform 1 has a different 5' noncoding exon compared to isoform 2. Both variants encode the same protein.

Protein Pathways: Parkinson's disease, Ubiquitin mediated proteolysis

Product images:



WB using anti-Ubiquitin Activating Enzyme (E1) antibody shows detection of a band at ~118 kDa corresponding to UBE1 (lane 1800 nm channel). Primary antibody was used at a 1:1,000 dilution. Secondary antibody was a 1:10,000 dilution of IRDye™800 conjugated Gt-a-Rabbit IgG [H&L]. Molecular weight markers are shown in lane 2 (700 nm channel).



Anti-Ubiquitin Activating Enzyme antibody was used at a 10 ug/ml to detect UBE1 in a variety of tissues including adrenal, breast, colon (epithelium), kidney, liver, lung (respiratory epithelium), ovary (oocyte and endothelium), pancreas (islet and exocrine), placenta, prostate (epithelium), skin (epithelium), spleen (lymphocytes), stomach (chief), testis, thymus, tonsil, and uterus (glandular, stroma).