

Product datasheet for **TA319009**

Factor D (CFD) Rabbit Polyclonal Antibody

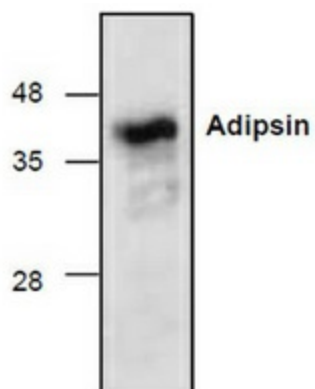
Product data:

Product Type:	Primary Antibodies
Applications:	WB
Recommended Dilution:	WB: 0.5-4 ug/ml
Reactivity:	Mouse, Rat
Host:	Rabbit
Isotype:	IgG
Clonality:	Polyclonal
Immunogen:	Synthetic peptide surrounding amino acid 232 of mouse Adipsin
Formulation:	100 µg (0.5 mg/ml) affinity purified rabbit polyclonal antibody in phosphate-buffered saline (PBS) containing 30% glycerol, 0.5% BSA, and 0.01% thimerosal.
Concentration:	lot specific
Purification:	Affinity purified
Conjugation:	Unconjugated
Storage:	Store at -20°C as received.
Stability:	Stable for 12 months from date of receipt.
Gene Name:	complement factor D
Database Link:	NP_001919 Entrez Gene 11537 Mouse Entrez Gene 54249 Rat P00746
Background:	Adipsin is a serine protease secreted by adipose tissue, and it has also been found in monocytes/macrophages. Adipsin has been identified to be similar to complement Factor D. Adipsin cleaved complement Factor B when the later form complexed with activated complement component C3. Low level expression of Adipsin has been linked to obesity in mouse model suggesting that defects in Adipsin is the result of this systemic disorder.
Synonyms:	ADIPSIN; ADN; DF; PFD
Protein Families:	Druggable Genome, Protease, Secreted Protein
Protein Pathways:	Complement and coagulation cascades



[View online »](#)

Product images:



Western blot analysis of Adipsin with rat kidney tissue lysate.