

Product datasheet for **TA319001**

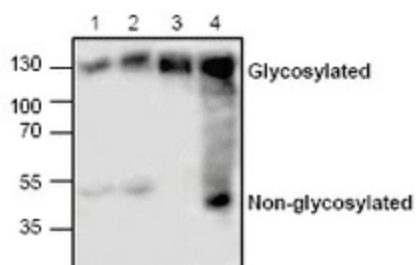
LAMP2 Rabbit Polyclonal Antibody

Product data:

Product Type:	Primary Antibodies
Applications:	WB
Recommended Dilution:	WB: 0.5-4 ug/ml
Reactivity:	Human, Mouse, Rat
Host:	Rabbit
Isotype:	IgG
Clonality:	Polyclonal
Immunogen:	Synthetic peptide surrounding amino acid 403 of rat LAMP2
Formulation:	100 µg (0.5 mg/ml) affinity purified rabbit polyclonal antibody in phosphate-buffered saline (PBS) containing 30% glycerol, 0.5% BSA, and 0.01% thimerosal.
Concentration:	lot specific
Purification:	Affinity purified
Conjugation:	Unconjugated
Storage:	Store at -20°C as received.
Stability:	Stable for 12 months from date of receipt.
Gene Name:	lysosomal associated membrane protein 2
Database Link:	NP_001116078 Entrez Gene 16784 Mouse Entrez Gene 24944 Rat Entrez Gene 3920 Human P13473
Background:	Lysosomal-associated membrane protein 2 (LAMP2) also known as CD107B (Cluster of Differentiation 107B) is a membrane glycoprotein. LAMP2 plays an important role in the normal function of lysosome which includes protecting lysosomal membrane from autodigestion, maintaining lysosome acidity, and lysosome cellular adhesion.
Synonyms:	CD107b; LAMP-2; LAMPB; LGP110
Protein Families:	Druggable Genome, ES Cell Differentiation/IPS, Transmembrane
Protein Pathways:	Lysosome



[View online »](#)

Product images:

Western blot analysis of LAMP2 in lysate from Jurkat cells (Lane 1 & 2), 3T3 cells (Lane 3) and rat kidney (Lane 4).