

## Product datasheet for **TA318959**

### PIM1 Rabbit Polyclonal Antibody

#### Product data:

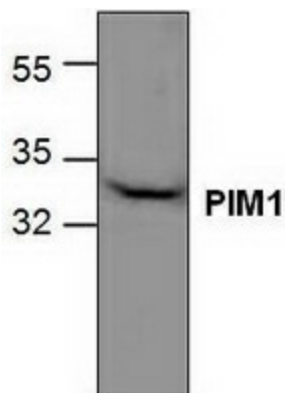
Product Type:	Primary Antibodies
Applications:	WB
Recommended Dilution:	WB: 0.5-4 µg/ml
Reactivity:	Human, Mouse, Rat
Host:	Rabbit
Isotype:	IgG
Clonality:	Polyclonal
Immunogen:	Synthetic peptide surrounding amino acid 296 of rat PIM1
Formulation:	100 µg (0.5 mg/ml) affinity purified rabbit anti-PIM1 polyclonal antibody in phosphate (PBS, pH 7.2) containing 30% glycerol, 0.5 % BSA and 0.01% thimerosal.
Concentration:	lot specific
Purification:	Affinity purified
Conjugation:	Unconjugated
Storage:	Store at -20°C as received.
Stability:	Stable for 12 months from date of receipt.
Gene Name:	Pim-1 proto-oncogene, serine/threonine kinase
Database Link:	<a href="#">NP_001230115</a> <a href="#">Entrez Gene 18712 Mouse</a> <a href="#">Entrez Gene 24649 Rat</a> <a href="#">Entrez Gene 5292 Human</a> <a href="#">P11309</a>
Background:	The proto-oncogene Pim1 belongs to a family of serine/threonine protein kinases that are highly conserved through evolution in multicellular organisms. Pim1 is involved in the control of cytokine-mediated cell proliferation, differentiation and survival of lymphoid and myeloid cells as well as others. Expression of Pim1 can be stimulated by a variety of growth factors and is regulated at four different levels: transcriptional, post-transcriptional, translational and post-translational. Recently, Pim1 has been shown to enhance the activities of p100, c-Myb and Cdc 25a and in part this might explain reported effects of Pim1 on mitogenesis.
Synonyms:	PIM
Protein Families:	Druggable Genome, ES Cell Differentiation/IPS, Protein Kinase



[View online »](#)

Protein Pathways: Acute myeloid leukemia, Jak-STAT signaling pathway

**Product images:**



Western blot analysis of PIM1 using Jurkat cell lysate.