

## Product datasheet for **TA318709**

### **KRT7**

#### **Product data:**

<b>Product Type:</b>	Primary Antibodies
<b>Clone Name:</b>	RCK105
<b>Applications:</b>	FC, ICC, IHC, WB
<b>Recommended Dilution:</b>	Flo (1:100 - 1:200) ICC IHC IHC-Fr (1:100 - 1:200) IHC-P (10 µg/ml) WB (1:100 - 1:1000)
<b>Reactivity:</b>	Feline, Dog, Human, Mouse, Pig, Rat, Hamster
<b>Host:</b>	Mouse
<b>Isotype:</b>	IgG1
<b>Clonality:</b>	Monoclonal
<b>Immunogen:</b>	Cytokeratins from the human bladder carcinoma cell line T24.
<b>Specificity:</b>	Reacts exclusively with cytokeratin 7 which is present in a subgroup of glandular epithelia and their tumors, as well as transitional epithelium and transitional carcinoma.
<b>Formulation:</b>	PBS, 0.09% Sodium Azide
<b>Concentration:</b>	lot specific
<b>Purification:</b>	Purified
<b>Conjugation:</b>	Unconjugated
<b>Storage:</b>	Short term: store at 4°C. Long term: aliquot and store at -20°C. Avoid freeze-thaw cycles. Store undiluted.
<b>Stability:</b>	12 months from date of despatch
<b>Gene Name:</b>	keratin 7
<b>Database Link:</b>	<a href="#">NP_005547</a> <a href="#">Entrez Gene 110310 Mouse</a> <a href="#">Entrez Gene 300242 Rat</a> <a href="#">Entrez Gene 477602 Dog</a> <a href="#">Entrez Gene 3855 Human</a> <a href="#">P08729</a>



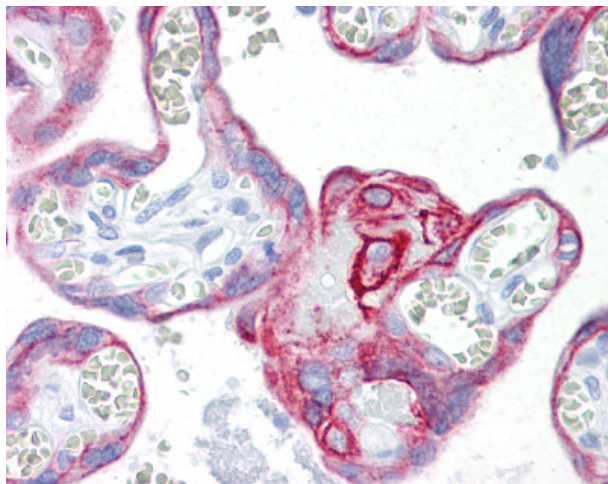
[View online »](#)

**Background:** Cytokeratin 7 antibody TA318709 is an unconjugated mouse monoclonal antibody to Cytokeratin 7 (KRT7 / CK7) from human. It is reactive with human, mouse, rat and other species. Validated for Flow, ICC, IHC and WB. Tested on 20 paraffin-embedded human tissues.

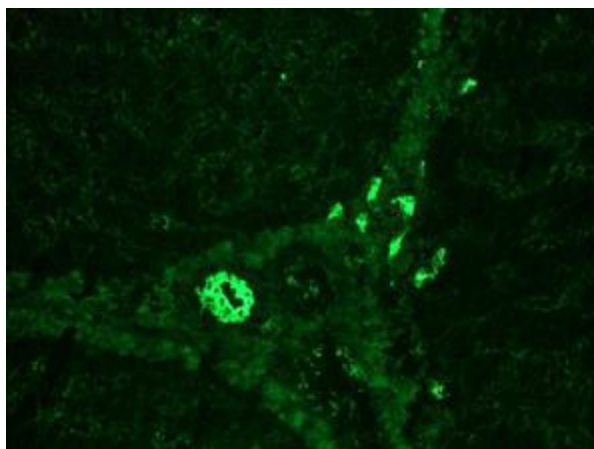
**Synonyms:** KRT7, CK-7, Cytokeratin 7, CK7, K2C7, K7, Keratin 7, Keratin-7, SCL, Type II mesothelial keratin K7, Cytokeratin-7, Sarcolectin, Type-II keratin Kb7

**Protein Families:** ES Cell Differentiation/IPS

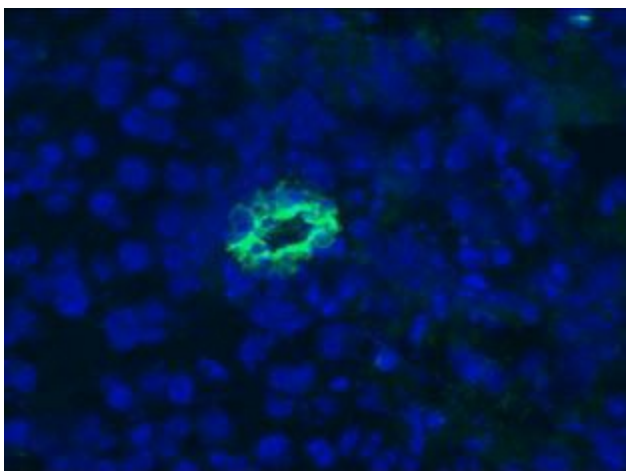
**Product images:**



Anti-KRT7 / Cytokeratin 7 antibody IHC of human placenta. Immunohistochemistry of formalin-fixed, paraffin-embedded tissue after heat-induced antigen retrieval. Antibody concentration 10 ug/ml.



Immunohistochemistry on frozen sections of swine liver, only bile duct epithelium positive; no reaction in hepatocytes



Immunohistochemistry on frozen sections of human liver, only bile duct epithelium positive; no reaction in hepatocytes